

# VOR/DME or TACAN RWY 6

MC GUIRE FLD,  
R-063 to CUGON, expect further clearance from ATC.

VORTAC GXU <b>110.6</b> Chan <b>43</b>	APCH CRS <b>044°</b>	Rwy ldg <b>10,014</b> TDZE <b>131</b> Arprt Elev <b>141</b>
--	-------------------------	---

AL-150 [USAF]

(JOINT BASE MC GUIRE DIX LAKEHURST) (KWRI)

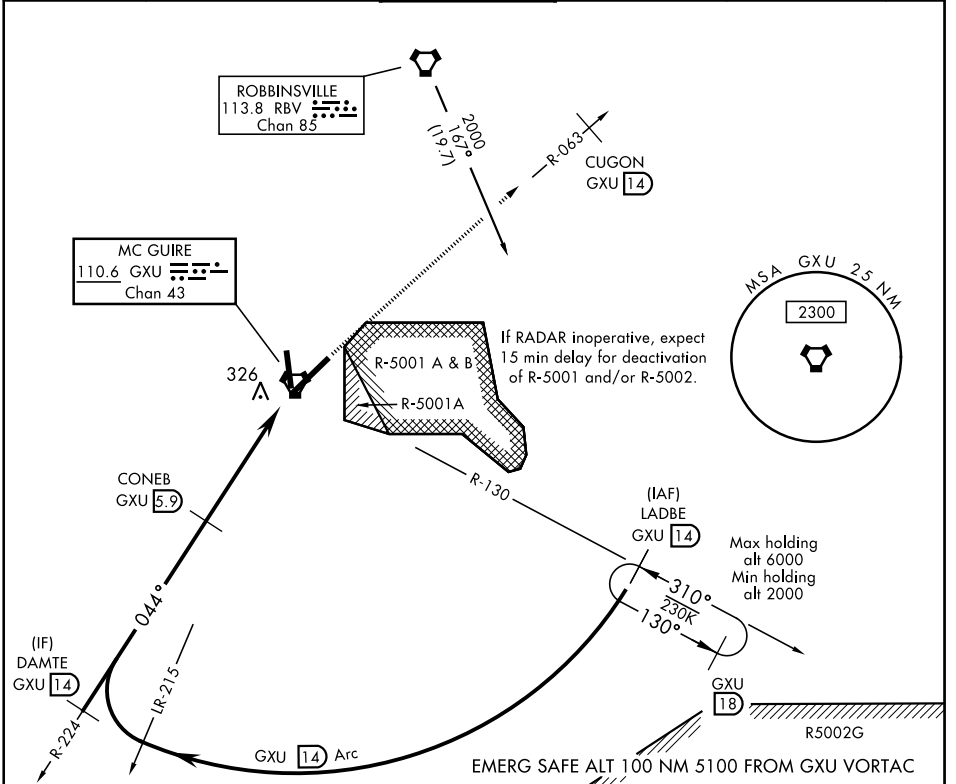
RADAR REQUIRED when R-5001 and/or R-5002 is active.

ALS-F-2

MISSED APPROACH: Climb to 2000 via GXU VORTAC R-063 to CUGON, expect further clearance from ATC.

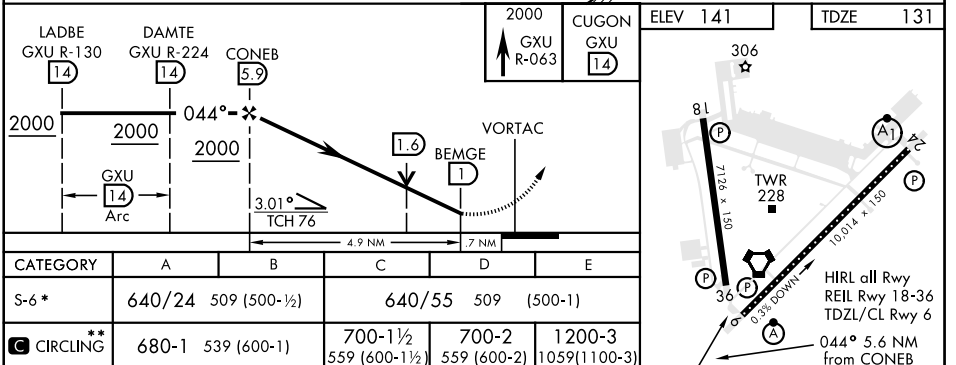
- \* When ALS inop, increase CAT AB RVR to 55 and vis to 1 mile, CAT CDE vis to 1 3/8 miles.
- \*\* Circling E of airfield NA when R-5001 A/B active.

ATIS <b>110.6 270.1</b>	MC GUIRE APP CON <b>126.475 363.8</b>	MC GUIRE TOWER <b>118.65 255.6</b>	GND CON <b>121.8 275.8</b>	CLNC DEL <b>135.2 335.8</b>	PAR
----------------------------	--	---------------------------------------	-------------------------------	--------------------------------	-----



NE-2, 25 FEB 2021 to 25 MAR 2021

NE-2, 25 FEB 2021 to 25 MAR 2021



# VOR/DME or TACAN RWY 6