

WRIGHTSTOWN, NEW JERSEY

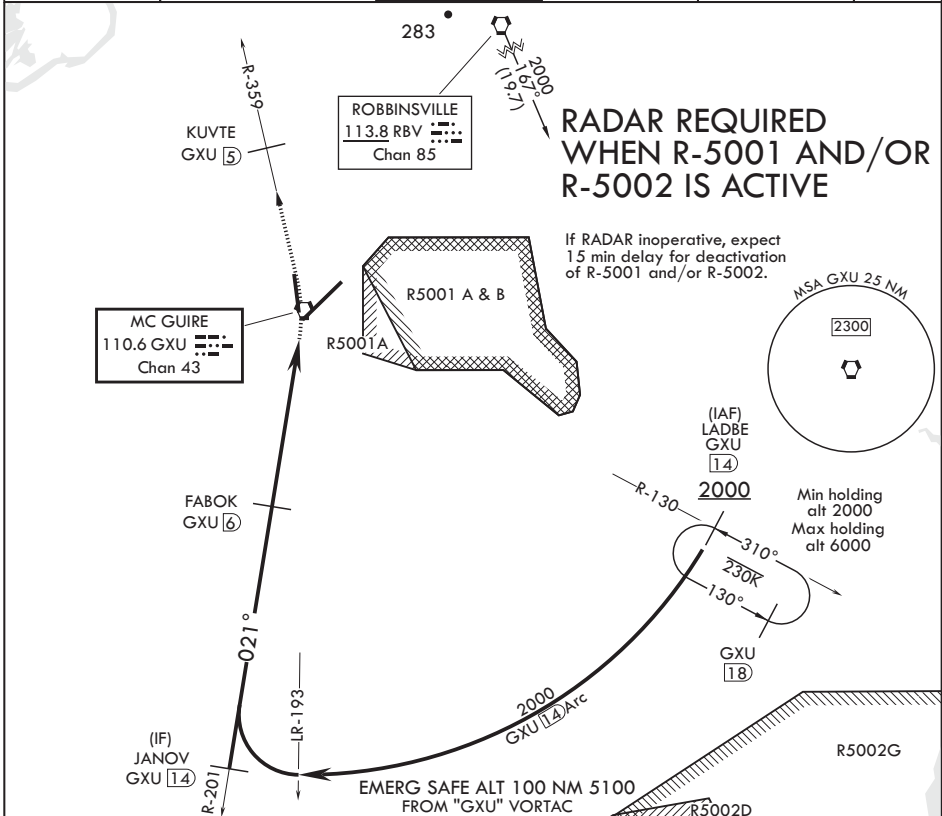
VOR/DME or TACAN RWY 36

VORTAC GXU 110.6 Chan 43	APCH CRS 021°	Rwy Idg TDZE Arprt Elev	7126 129 141
--------------------------------	------------------	-------------------------------	--------------------

AL-150 (USAF)
MC GUIRE FIELD (JOINT BASE MC GUIRE DIX LAKEHURST) (KWRI)

▼ * Circling East of Airfield NA when R-5001 A/B active. MISSED APPROACH: Climb to 2000 via GXU R-359 to KUVTE, expect further clearance with ATC.

ATIS 110.6 270.1	MC GUIRE APP CON 126.475 363.8	TOWER 118.65 255.6	GND CON 121.8 275.8	CLNC DEL 135.2 335.8	PAR
---------------------	-----------------------------------	-----------------------	------------------------	-------------------------	-----



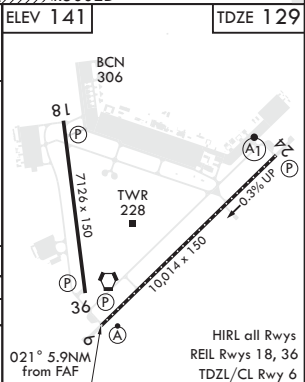
**RADAR REQUIRED
WHEN R-5001 AND/OR
R-5002 IS ACTIVE**

If RADAR inoperative, expect 15 min delay for deactivation of R-5001 and/or R-5002.

NE-2, 25 FEB 2021 to 25 MAR 2021

NE-2, 25 FEB 2021 to 25 MAR 2021

LADBE GXU R-130 (14)		JANOV GXU R-201 (14)		FABOK GXU (6)		GXU (14) Arc		KUVTE GXU (5)		ELEV 141		TDZE 129	
2000		021°		2000		2.92° ≥ TCH 46		5.1 NM		0.8			
CATEGORY	A	B	C	D	E								
S-36	600-1	471 (500-1)	600-1 3/8	471	(500-1 3/8)								
CIRCLING*	680-1	539 (600-1)	700-1 1/2 559 (600-1 1/2)	700-2 559 (600-2)	1200-3 1059 (1100-3)								



WRIGHTSTOWN, NEW JERSEY

MC GUIRE FIELD (JOINT BASE MC GUIRE DIX LAKEHURST) (KWRI)

Amdt 6 10SEP20

40°01'N - 74°36'W

VOR/DME or TACAN RWY 36