

WRIGHTSTOWN, NEW JERSEY

VOR/DME or TACAN RWY 24

VORTAC GXU 110.6 Chan 43	APCH CRS 243°	Rwy Idg TDZE Arpt Elev	10,014 117 141
--------------------------------	------------------	------------------------------	----------------------

AL-150 (USAF)
MC GUIRE FIELD (JOINT BASE MC GUIRE DIX LAKEHURST) (KWRI)

▲ * When ALS inop, increase CAT AB RVR to 55 and vis to 1 mile, CAT CDE vis to 1 3/8 miles.
** Circling East of airfield NA when R-5001 A/B active.

ALSF-1 MISSED APPROACH: Climb to 2000 via GXU R-224 to DAMTE, Expect further clearance from ATC.

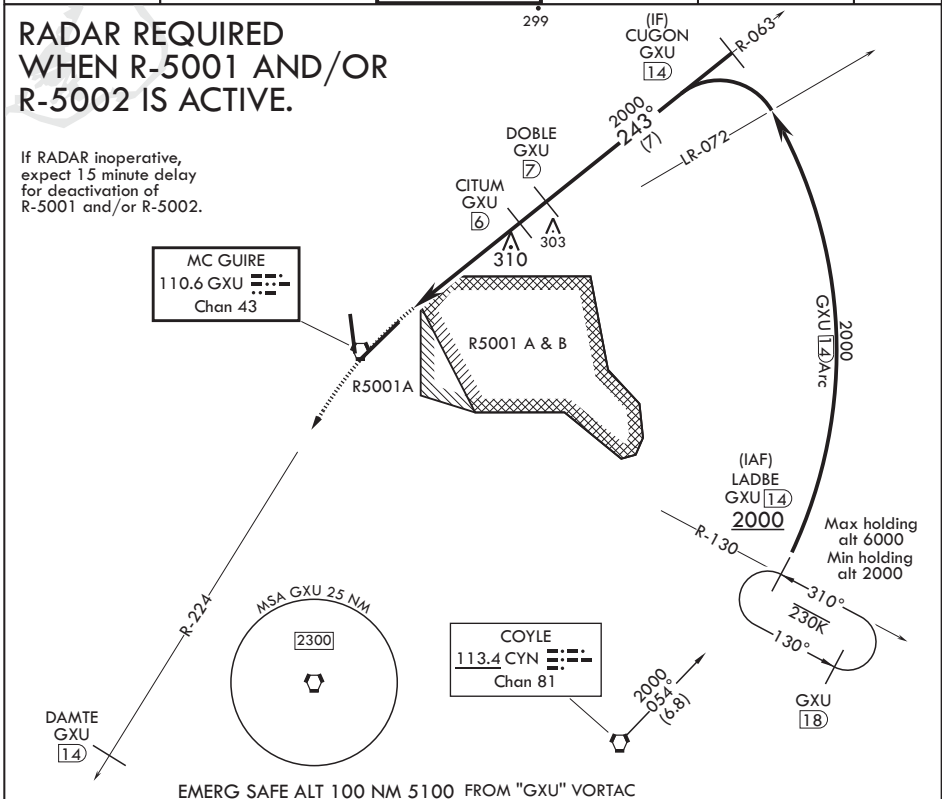
ATIS 110.6 270.1	MC GUIRE APP CON 126.475 363.8	TOWER 118.65 255.6	GND CON 121.8 275.8	CLNC DEL 135.2 335.8	PAR
---------------------	-----------------------------------	-----------------------	------------------------	-------------------------	-----

**RADAR REQUIRED
WHEN R-5001 AND/OR
R-5002 IS ACTIVE.**

If RADAR inoperative, expect 15 minute delay for deactivation of R-5001 and/or R-5002.

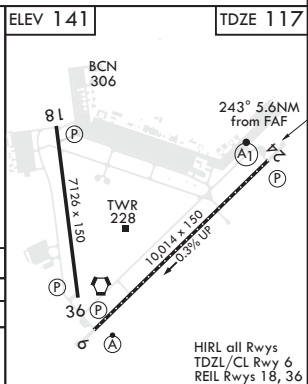
MC GUIRE
110.6 GXU [43]
Chan 43

COYLE
113.4 CYN [81]
Chan 81



EMERG SAFE ALT 100 NM 5100 FROM "GXU" VORTAC

2000 GXU R-224	DAMTE GXU [14]	DOBLE GXU [7]	CUGON GXU R-063 [14]	LADBE GXU R-130 [14]	
GXU VORTAC	LAYEG GXU [2]	GXU [2.7]	CITUM GXU [6]		
	0.6	4 NM	1 NM		
		243°	2000	2000	
		1600	2000	2000	
		≤ 3.07°	TCH 76	[14] Arc	
CATEGORY	A	B	C	D	E
S-24*	580/24	463 (500-1/2)	580/50	463 (500-1)	
CIRCLING**	680-1	539 (600-1)	700-1 1/2 559 (600-1 1/2)	700-2 559 (600-2)	1200-3 1059 (1100-3)



HIRL all Rwys
TDZ/CL Rwy 6
REIL Rwys 18, 36

NE-2, 25 FEB 2021 to 25 MAR 2021

NE-2, 25 FEB 2021 to 25 MAR 2021

WRIGHTSTOWN, NEW JERSEY
Amdt 6 10SEP20

MC GUIRE FIELD (JOINT BASE MC GUIRE DIX LAKEHURST) (KWRI)
40°01'N - 74°36'W
VOR/DME or TACAN RWY 24