

WRIGHTSTOWN, NEW JERSEY

RNAV (GPS) RWY 24

WAAS CH 91359 W24A	APCH CRS 238°	Rwy ldg TDZE Arpt Elev	10,014 117 141
--------------------------	------------------	------------------------------	----------------------

AL-150 (USAF)
MC GUIRE FIELD (JOINT BASE MC GUIRE DIX LAKEHURST) (KWRI)

V * When ALS inop, increase RVR to 40, vis to 3/4 mile.
 ** When ALS inop, increase vis to 1 3/8 miles.
 *** When ALS inop increase CAT AB RVR to 55, vis to 1 mile, CAT CDE vis to 1 3/8 miles.

ALSF-1
 MISSED APPROACH: Climb to 2000 direct CISON and hold.

ATIS 110.6 270.1	MC GUIRE APP CON 126.475 363.8	TOWER 118.65 255.6	GND CON 121.8 275.8	CLNC DEL 135.2 335.8	PAR
---------------------	-----------------------------------	-----------------------	------------------------	-------------------------	-----

**** Circling East of the Airfield
 NA when R-5001 A/B active.

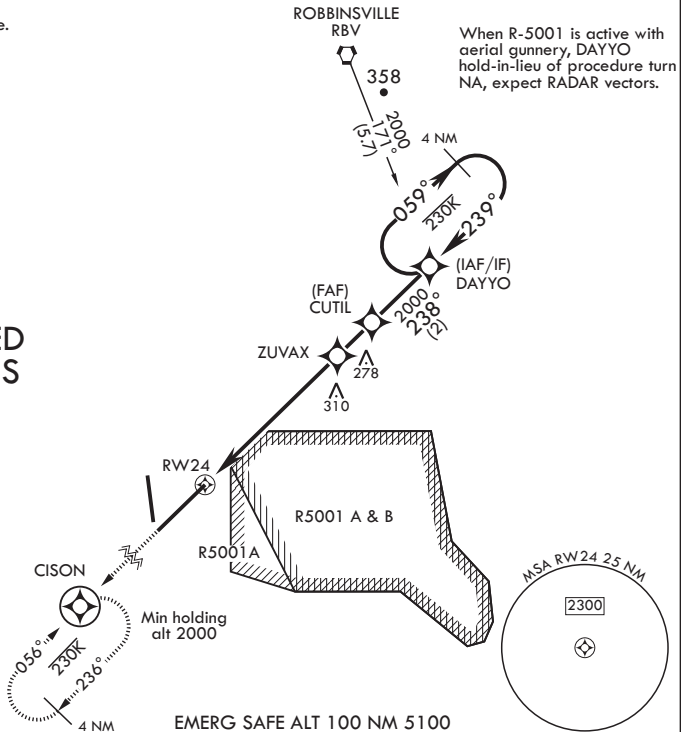
DME/DME RNP-0.3 NA

For uncompensated Baro-VNAV systems,
 Procedure NA below -15°C (5°F) or above 53°C (128°F).

RADAR required for holding above 2000 and/or > 230 KIAS.

RADAR REQUIRED WHEN R-5001 IS ACTIVE.

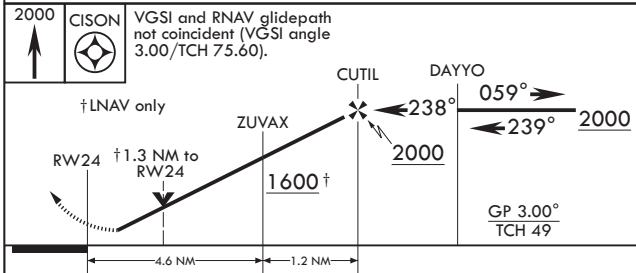
If RADAR inoperative, expect 15 min delay for deactivation of R-5001.



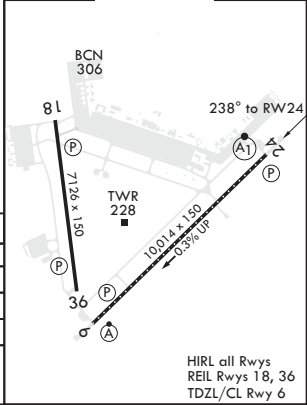
When R-5001 is active with aerial gunnery, DAYYO hold-in-lieu of procedure turn NA, expect RADAR vectors.

NE-2, 25 FEB 2021 to 25 MAR 2021

NE-2, 25 FEB 2021 to 25 MAR 2021



ELEV 141	TDZE 117
----------	----------



CATEGORY	A	B	C	D	E
LPV DA*	317/24		200	(200-1/2)	
RNAV/VNAV DA**	580/50		463	(500-1)	
RNAV MDA***	580/24	463 (500-1/2)	580/50	463	(500-1)
C CIRCLING****	680-1 539 (600-1)		700-1 1/2 559 (600-1/2)	700-2 559 (600-2)	1200-3 1059 (1100-3)

HIRL all Rwy's
 REIL Rwy's 18, 36
 TDZL/CL Rwy 6

WRIGHTSTOWN, NEW JERSEY

MC GUIRE FIELD (JOINT BASE MC GUIRE DIX LAKEHURST) (KWRI)

Amdt 6 30JAN20

40°01'N - 74°36'W

RNAV (GPS) RWY 24