

WARNER ROBINS, GEORGIA

VOR/DME or TACAN RWY 33

VORTAC MCN 114.2 Chan 89	APCH CRS 318°	Rwy Idg 12,001 THRE 274 Arprt Elev 294
--	-------------------------	---

AL-442 [USAF]

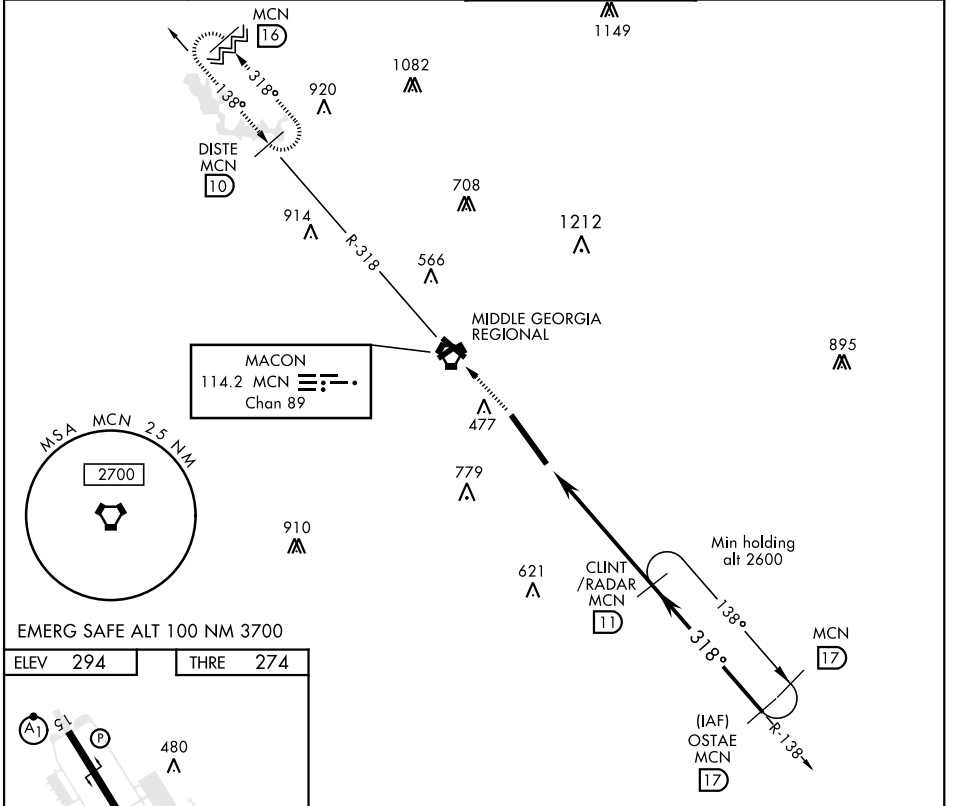
ROBINS AFB (KWRB)

* When ALS inop, increase CAT AB RVR to 55 and vis to 1 mile, CAT CDE vis to 1 3/8 miles.
** Circling not authorized W of Rwy 15-33.



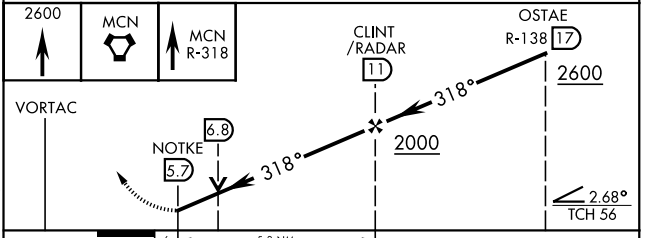
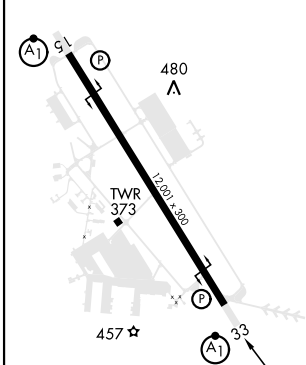
MISSED APPROACH: Climb to 2600 to MCN VORTAC then out MCN R-318 to DISTE and hold.

ATIS 119.475 273.475	ATLANTA APP CON 124.2 279.6	ROBINS TOWER 133.225 257.975	GND CON 121.85 275.8
--------------------------------	---------------------------------------	--	--------------------------------



EMERG SAFE ALT 100 NM 3700

ELEV 294	THRE 274
----------	----------



CATEGORY	A	B	C	D	E
S-33 *	780/24 507 (500-1/2)		780/55 507 (500-1)		
CIRCLING **	780-1 486 (500-1)		840-1 1/2 546 (600-1 1/2)	960-2 666 (700-2)	1100-2 3/4 806 (900-2 3/4)

WARNER ROBINS, GEORGIA
Amdt 6 28FEB19

32° 38' N-83° 36' W

ROBINS AFB (KWRB)

VOR/DME or TACAN RWY 33

SE-4, 25 FEB 2021 to 25 MAR 2021

SE-4, 25 FEB 2021 to 25 MAR 2021