

WARNER ROBINS, GEORGIA

RNAV (GPS) RWY 33

APCH CRS 326°	Rwy Idg 12,001
	TDZE 274
	Arprt Elev 294

AL-442 (USAF)

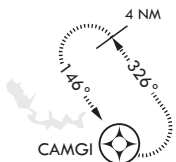
ROBINS AFB (KWRB)

* When ALS inop increase CAT AB RVR to 55, vis to 1 mile, CAT CDE vis to 1 3/8.
 ** When ALS inop, increase CAT AB RVR to 55, vis to 1 mile, CAT CDE vis to 1 3/8.
 *** Circling NA SW of RWY 33-15.



MISSED APPROACH: Climb to 2600 direct CAMGI and hold.

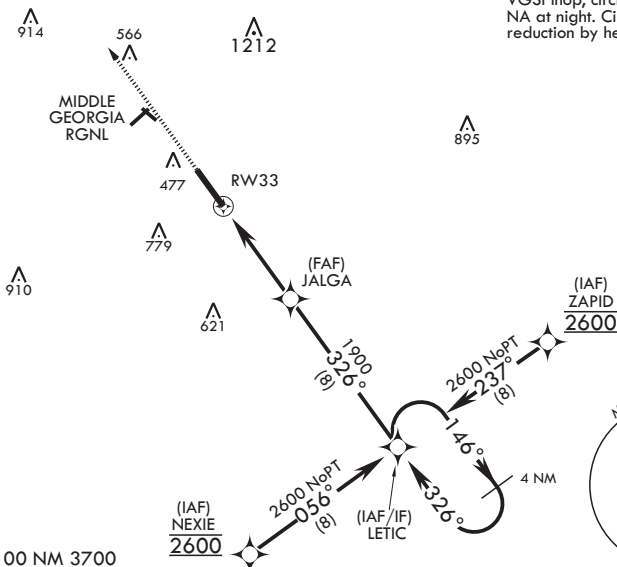
ATIS 119.475 273.475	ATLANTA APP CON/DEP CON 124.2 279.6	TOWER 133.225 257.975	GND CON 121.85 275.8
--------------------------------	---	---------------------------------	--------------------------------



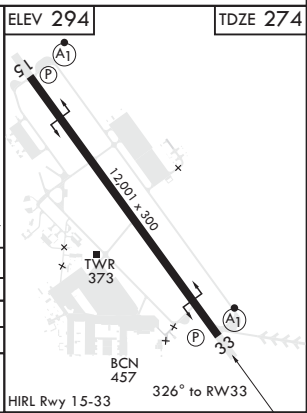
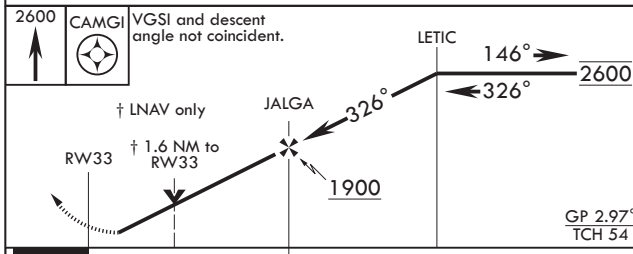
DME/DME RNP-0.3 NA

For uncompensated Baro-VNAV systems, Procedure NA below -15°C (5°F) or above 54°C (130°F).

CAUTION: When Rwy 15 VGSI inop, circling to Rwy 15 NA at night. Circling visibility reduction by helicopters NA.



EMERG SAFE ALT 100 NM 3700



CATEGORY	A	B	C	D	E
LNAV/VNAV DA*	820-1 3/8		546	(600-1 3/8)	
LNAV MDA**	760/24 486 (500-1/2)		760/50	486	(500-1)
CIRCLING***	780-1	487 (500-1)	840-1 1/2 547 (600-1 1/2)	960-2 667 (700-2)	1100-2 3/4 807 (900-2 3/4)

WARNER ROBINS, GEORGIA
 Amdt 4 28FEB19

32°38'N - 83°36'W

ROBINS AFB (KWRB)

RNAV (GPS) RWY 33

SE-4, 25 FEB 2021 to 25 MAR 2021

SE-4, 25 FEB 2021 to 25 MAR 2021