

# HI-ILS or LOC RWY 15

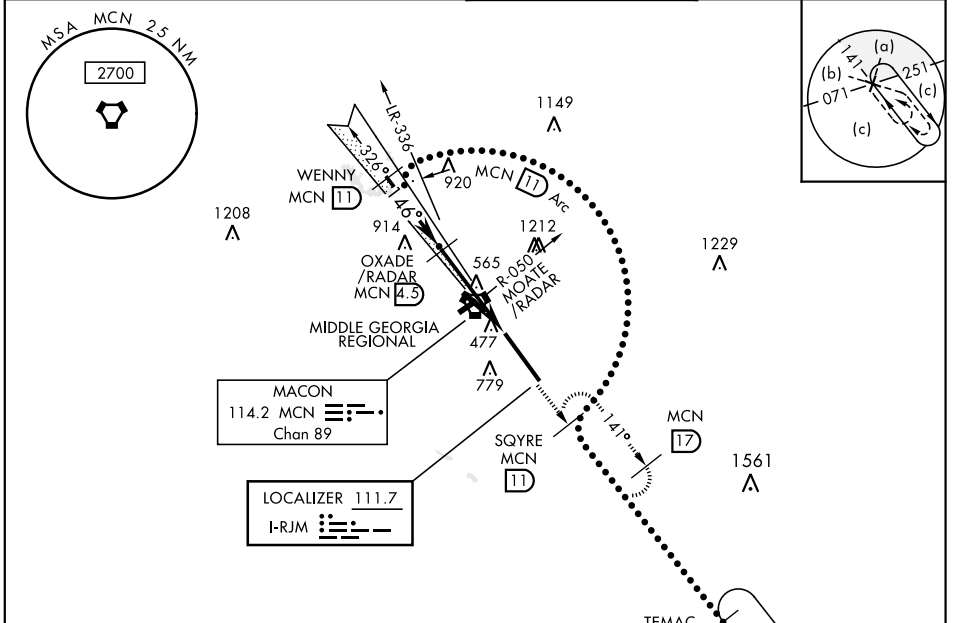
LOC I-RJM <b>111.7</b>	APCH CRS <b>146°</b>	Rwy Idg <b>12,001</b> THRE <b>293</b> Arprt Elev <b>294</b>	JAL-442 [USAF]	ROBINS AFB (KWRB)
---------------------------	-------------------------	--	----------------	-------------------

\*When ALS inop, increase CAT CDE RVR to 40 and vis to ¾ mile.  
 \*\*When ALS inop, increase CAT CDE vis to 1¾ miles.  
 \*\*\*Circling not authorized W of Rwy 15-33.



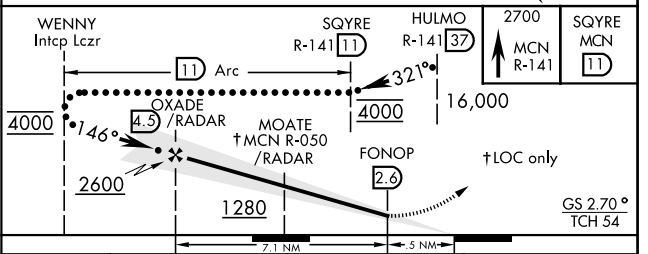
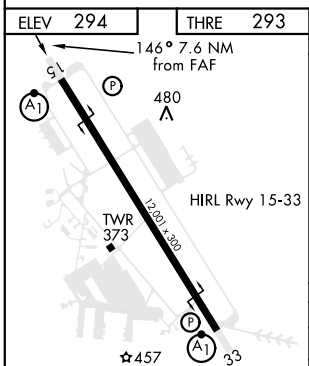
MISSED APPROACH: Climb to 2700 out MCN R-141 to SQYRE and hold.

ATIS <b>119.475 273.475</b>	ATLANTA APP CON <b>124.2 279.6</b>	ROBINS TOWER <b>133.225 257.975</b>	GND CON <b>121.85 275.8</b>
--------------------------------	---------------------------------------	--	--------------------------------



**DME or RADAR REQUIRED**  
**VOR or TACAN REQUIRED**

EMERG SAFE ALT 100 NM 3700



FAF to MAP 7.1 NM		WENNY Intcp Lczt		SQYRE R-141 (11)		HULMO R-141 (37)		2700 MCN R-141		SQYRE MCN (11)		
4000		146°		11 Arc		321°		16,000		†LOC only		
2600		146°		OXADE/RADAR MCN 4.5		MOATE/RADAR MCN 4.5		FONOP MCN 2.9		GS 2.70° TCH 54		
1280		7.1 NM		5 NM								
CATEGORY	C			D			E					
S-ILS 15 *	493/24			200			(200-½)					
S-LOC 15 **	680/35			387			(400-¾)					
CIRCLING ***	840-1½			960-2			1100-2¾					
	546 (600-1½)			666 (700-2)			806 (900-2¾)					

# HI-ILS or LOC RWY 15

SE-4, 25 FEB 2021 to 25 MAR 2021

SE-4, 25 FEB 2021 to 25 MAR 2021