

| | | | |
|--|------------------------|-----------------------------|---|
| WAAS CH 86836 W17A | APP CRS 174° | Rwy Idg TDZE Apt Elev | 5506 1158 1160 |
|--|------------------------|-----------------------------|---|

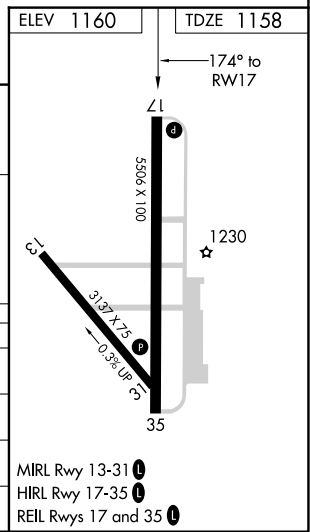
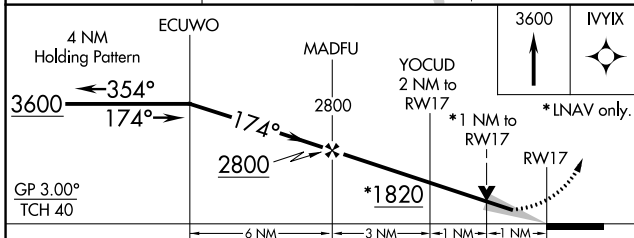
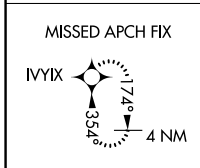
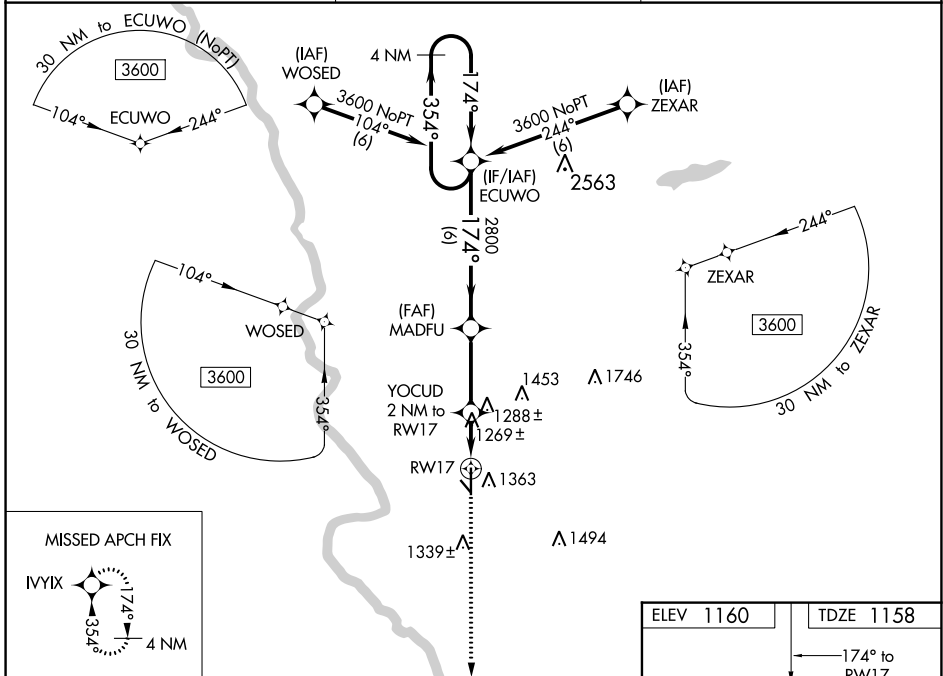
RNAV (GPS) RWY 17

STROTHOR FIELD (WLD)

▽ DME/DME RNP-0.3 NA. For uncompensated Baro-VNAV systems, LNAV/VNAV NA below -15°C (5°F) or above 54°C (130°F). Baro-VNAV and VDP NA when using Wichita Mid-Continent altimeter setting. When local altimeter setting not received, use Wichita Mid-Continent altimeter setting and increase all DA 104 feet and all MDA 120 feet; increase LPV, LNAV/VNAV all Cats and LNAV Cat C visibility 3/8 mile; increase Circling Cat C visibility 1/4 mile.

MISSED APPROACH: Climb to 3600 direct IVYX and hold.

| | | |
|------------------------|--|---------------------------------|
| ASOS 118.025 | KANSAS CITY CENTER 127.8 319.1 | UNICOM 122.8 (CTAF) 0 |
|------------------------|--|---------------------------------|



| CATEGORY | A | B | C | D |
|-------------------|----------|---------------|-------------------------------|----|
| LPV DA | 1408-7/8 | 250 (300-7/8) | | NA |
| LNAV/VNAV DA | 1419-7/8 | 261 (300-7/8) | | NA |
| LNAV MDA | 1520-1 | 362 (400-1) | | NA |
| C CIRCLING | 1680-1 | 520 (600-1) | 1680-1 1/2 520 (600-1 1/2) | NA |

NC-2, 25 FEB 2021 to 25 MAR 2021

NC-2, 25 FEB 2021 to 25 MAR 2021