

WAAS CH <b>53611</b> <b>W22A</b>	APP CRS <b>223°</b>	Rwy Idg TDZE <b>23</b> Apt Elev <b>24</b>	<b>4945</b>
--	------------------------	---	-------------

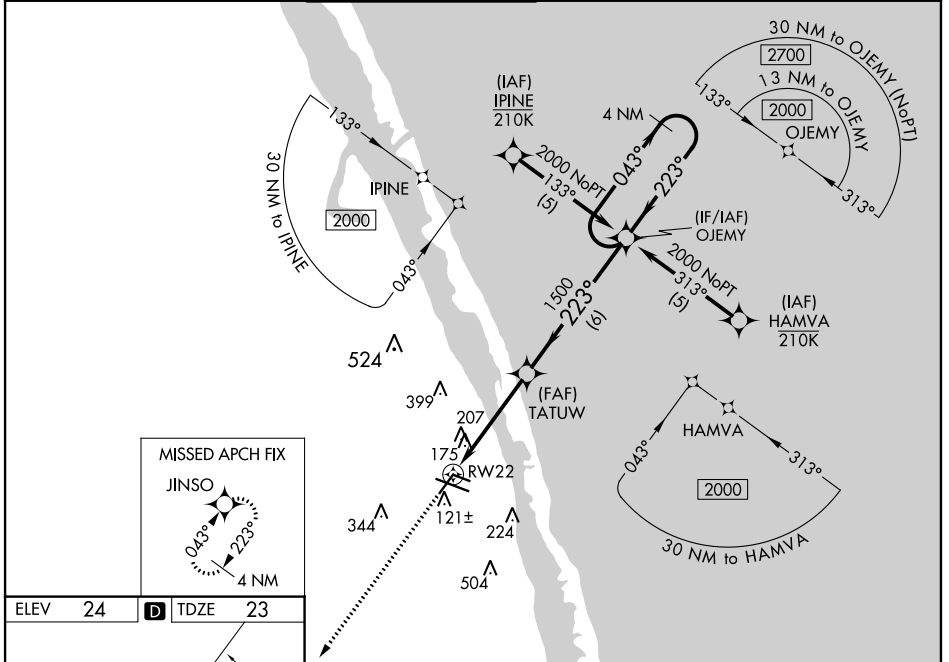
# RNAV (GPS) RWY 22

VERO BEACH RGNL (VRB)

**⚠** Circling to Rwy 30R NA at night. For uncompensated Baro-VNAV systems, LNAV/VNAV NA below 0°C (32°F) or above 43°C (109°F). DME/DME RNP-0.3 NA. When local altimeter setting not received, use Fort Pierce altimeter setting and increase all DA 23 feet and all MDA 40 feet and increase LPV and LNAV/VNAV all Cats visibility 1/8 mile and LNAV Cats C/D 1/8 mile and Circling Cat D visibility 1/4 mile. Baro-VNAV and VDP NA when using Fort Pierce altimeter setting. Rwy 22 helicopter visibility reduction below 3/4 SM NA.

**MISSED APPROACH:**  
Climb to 2000 direct JINSO and hold.

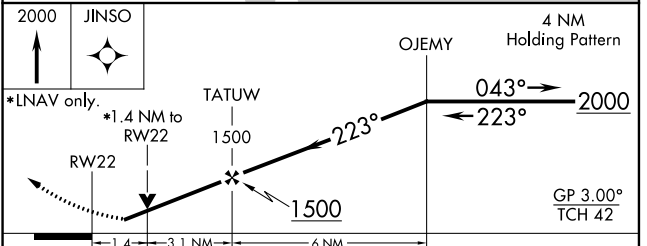
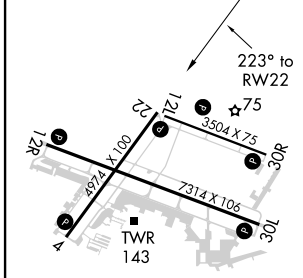
ATIS <b>120.575</b>	PALM BEACH APP CON <b>123.625 225.4 (N)</b>	VERO BEACH TOWER * <b>126.3 (CTAF) 0</b>	GND CON <b>127.45</b>	CLNC DEL <b>134.975</b>	UNICOM <b>122.95</b>
------------------------	--	---	--------------------------	----------------------------	-------------------------



SE-3, 25 FEB 2021 to 25 MAR 2021

SE-3, 25 FEB 2021 to 25 MAR 2021

ELEV <b>24</b>	<b>D</b>	TDZE <b>23</b>
----------------	----------	----------------



CATEGORY	A	B	C	D
LPV DA		340-1	317 (400-1)	
LNAV/VNAV DA		544-1 3/4	521 (600-1 3/4)	
LNAV MDA	520-1	497 (500-1)	520-1 3/8	497 (500-1 3/8)
CIRCLING	560-1	536 (600-1)	560-1 1/2	660-2
			536 (600-1 1/2)	636 (700-2)

MIRL Rwy 4-22, 12R-30L, and 12L-30R **0**  
REIL Rwy 4, 12R, 22 and 30L **0**