

WAAS CH 50516 W09A	APP CRS 095°	Rwy Idg 8003 TDZE 77 Apt Elev 80
--	------------------------	---

RNAV (GPS) RWY 9R

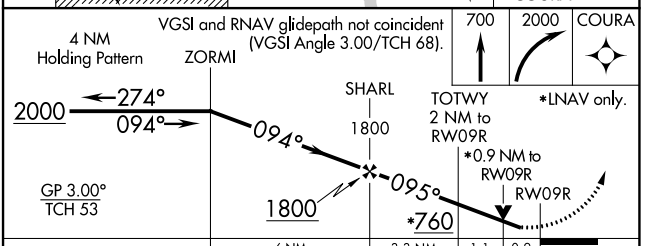
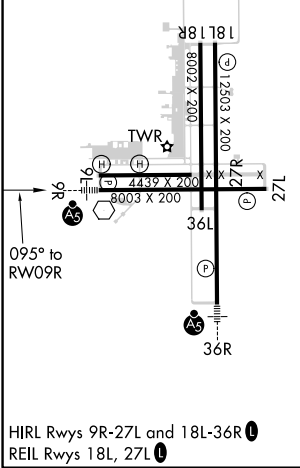
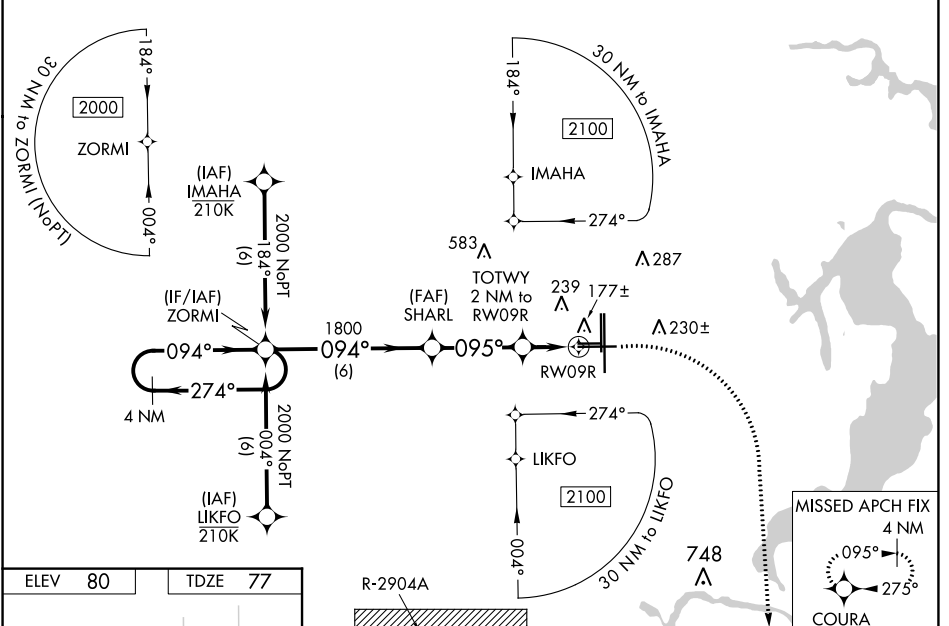
CECIL (VQQ)

⚠ Baro-VNAV NA when using Jacksonville Intl altimeter setting. For uncompensated Baro-VNAV systems, LNAV/VNAV NA below -15°C (5°F) or above 54°C (130°F). DME/DME RNP-0.3 NA. Helicopter visibility reduction below 3/4 SM NA. When local altimeter setting not received, use Jacksonville Intl altimeter setting and increase all DA 52 feet and all MDA 60 feet. For inop MALSR, increase LPV and LNAV/VNAV all Cats visibility to 7/8 mile, and LNAV all Cats visibility to 1 mile. For inop MALSR, when using Jacksonville Intl altimeter setting, increase LPV all Cats visibility to 1 mile, LNAV/VNAV all Cats visibility to 1 mile, and LNAV Cats C/D visibility to 1 1/8 mile.

MALSR

MISSED APPROACH:
Climb to 700 then climbing right turn to 2000 direct COURA and hold.

ATIS 125.275	JACKSONVILLE APP CON 127.775 377.075	CECIL TOWER* 126.1 (CTAF) 387.025	GND CON 121.625 384.4	CLNC DEL 123.975	GCO 135.075	UNICOM 122.95
------------------------	--	---	---------------------------------	----------------------------	-----------------------	-------------------------



CATEGORY	A	B	C	D
LPV DA		351-3/4	274 (300-3/4)	
LNAV/VNAV DA		338-3/4	261 (300-3/4)	
LNAV MDA		440-3/4	363 (400-3/4)	
C CIRCLING	540-1 460 (500-1)	560-1 480 (500-1)	600-1 1/2 520 (600-1 1/2)	640-2 560 (600-2)

SE-3, 25 FEB 2021 to 25 MAR 2021

SE-3, 25 FEB 2021 to 25 MAR 2021