


# RNAV (GPS) RWY 36R

CECIL (VQQ)

WAAS CH <b>82036</b> <b>W36A</b>	APP CRS <b>005°</b>	Rwy Idg <b>12503</b> TDZE <b>72</b> Apt Elev <b>80</b>
--	------------------------	--

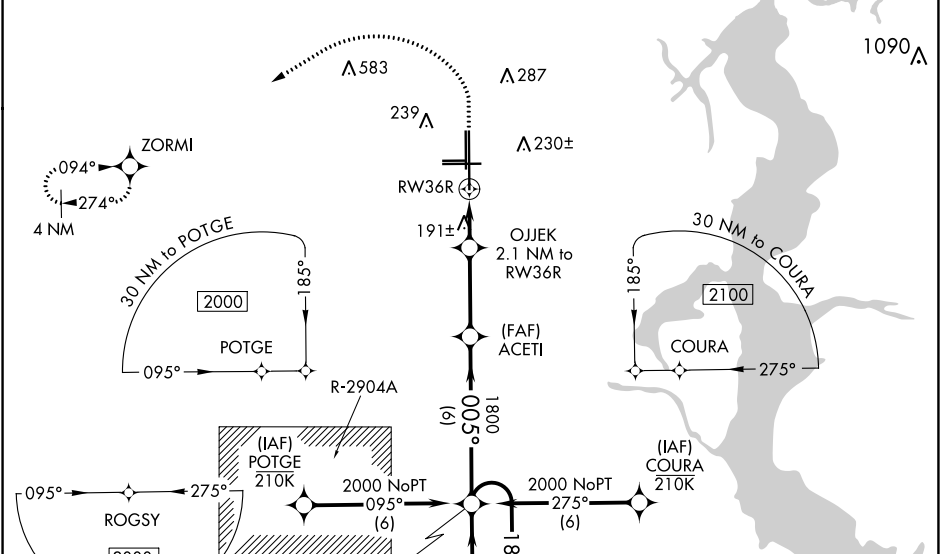
**⚠** Baro-VNAV and VDP NA when using Jacksonville Intl altimeter setting.  
**⚠** For uncompensated Baro-VNAV systems, LNAV/VNAV NA below -15°C (5°F) or above 54°C (130°F). DME/DME RNP-0.3 NA. When local altimeter setting not received, use Jacksonville Intl altimeter setting and increase all DA 52 feet and all MDA 60 feet. Increase LNAV/VNAV all Cats visibility to 1 mile and LNAV Cats C, D visibility to ¾ mile.

MALSRL

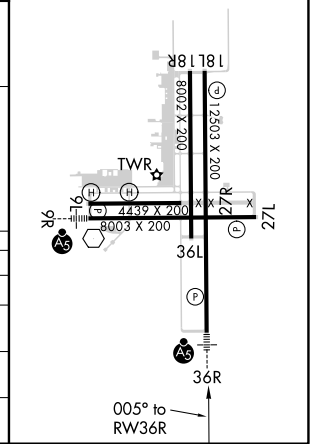
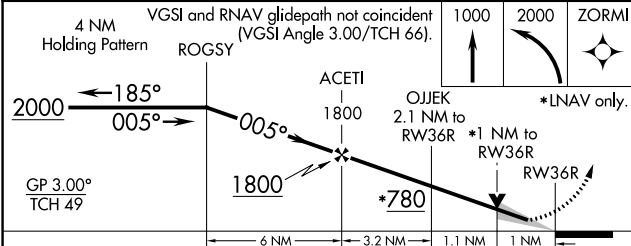


MISSED APPROACH:  
Climb to 1000 then climbing left turn to 2000 direct ZORMI and hold.

ATIS <b>125.275</b>	JACKSONVILLE APP CON <b>127.775 377.075</b>	CECIL TOWER* <b>126.1 (CTAF) 0 387.025</b>	GND CON <b>121.625 384.4</b>	CLNC DEL <b>123.975</b>	GCO <b>135.075</b>	UNICOM <b>122.95</b>
------------------------	--	---	---------------------------------	----------------------------	-----------------------	-------------------------



ELEV <b>80</b>	TDZE <b>72</b>
HIRL Rwy 9R-27L and 18L-36R	
REIL Rwy 18L, 27L	



CATEGORY	A	B	C	D
LPV DA		272-½	200 (200-½)	
LNAV/VNAV DA		467-¾	395 (400-¾)	
LNAV MDA	460-½	388 (400-½)	460-⅝	388 (400-⅝)
CIRCLING	540-1	560-1	600-1½	640-2
	460 (500-1)	480 (500-1)	520 (600-1½)	560 (600-2)

SE-3, 25 FEB 2021 to 25 MAR 2021

SE-3, 25 FEB 2021 to 25 MAR 2021