

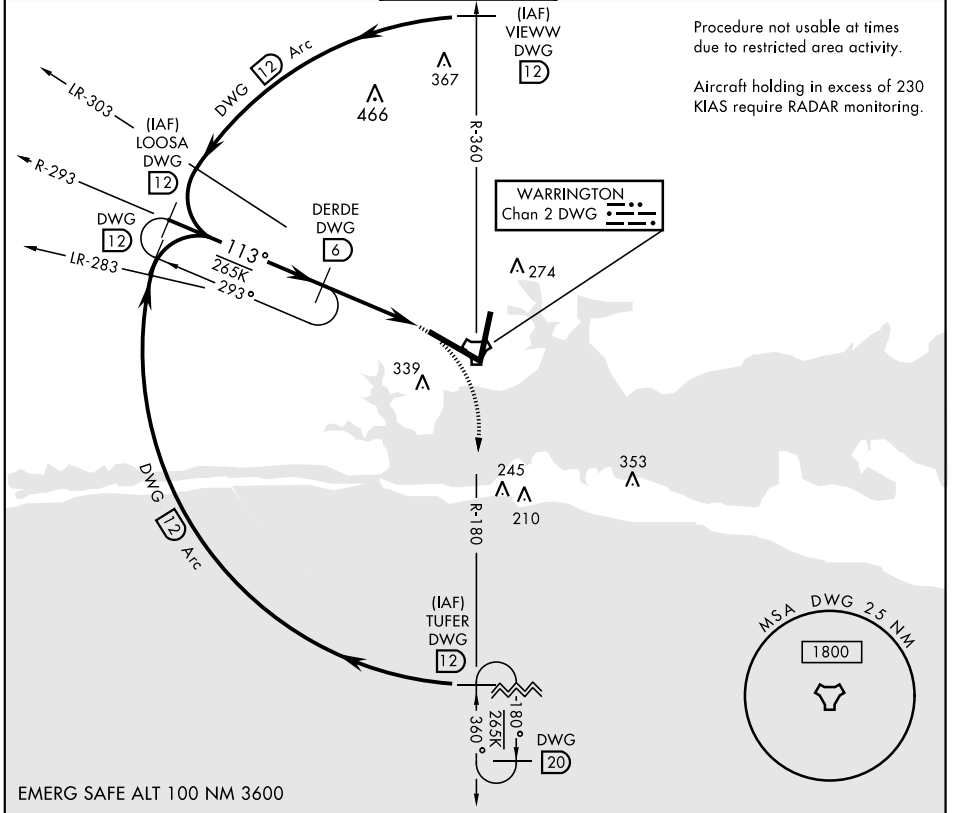
TACAN RWY 12

TACAN DWG Chan 2	APCH CRS 113°	Rwy Ldg THRE 11,987 84 84
---------------------	------------------	------------------------------------

AL-436 [USAF] EGLIN AFB/DESTIN-FT WALTON BEACH (KVPS)

MISSED APPROACH: Climbing right turn to 2200 on DWG R-180/12 DME (TUFER) and hold.

ATIS ★ 134.625 273.5	EGLIN APP CON 125.1 281.45 271°-089° 132.1 360.6 090°-270°	EGLIN TOWER 118.2 353.65	GND CON 121.8 335.8	CLNC DEL 127.7 377.2
-------------------------	--	-----------------------------	------------------------	-------------------------



	2200	ELEV 84	THRE 84		
	VIEWWW R-360	113° to TACAN			
	2000				
	2500				
	1500				
	3.02° TCH 50				
	3.8 NM				
	.5 NM				
CATEGORY	A	B	C	D	E
S-12	540/55	456 (500-1)	540-1 $\frac{3}{8}$	456 (500-1 $\frac{3}{8}$)	
CIRCLING	660-1	576 (600-1)	760-2 676 (700-2)	760-2 $\frac{1}{4}$ 676 (700-2 $\frac{1}{4}$)	760-2 $\frac{1}{2}$ 676 (700-2 $\frac{1}{2}$)

HIRL all Rwy † Rwy 19 apch lgt 1500' nonstandard.

TACAN RWY 12

SE-3, 25 FEB 2021 to 25 MAR 2021

SE-3, 25 FEB 2021 to 25 MAR 2021