

VALPARAISO, FLORIDA

# RNAV (GPS) RWY 30

APCH CRS	Rwy ldg	11,987
300°	THRE	49
	Arpt Elev	84

AL-436 [USAF] EGLIN AFB/DESTIN-FT WALTON BEACH (KVPS)

\* When ALS inop, increase CAT AB RVR to 55 and vis to 1 mile, CAT CDE vis to 1 3/8 miles.



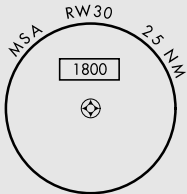
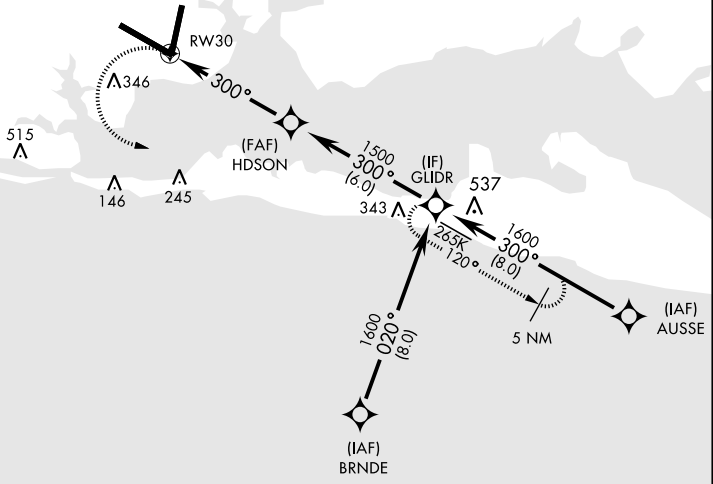
MISSED APPROACH: Climbing left turn to 2000 to GLIDR and hold.

ATIS ★	EGLIN APP CON	EGLIN TOWER	GND CON	CLNC DEL
134.625 273.5	125.1 281.45 271°-089° 132.1 360.6 090°-270°	118.2 353.65	121.8 335.8	127.7 377.2

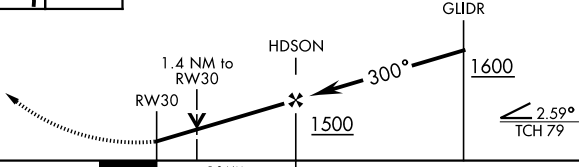
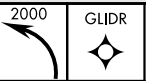
DME/DME RNP-0.3 NA

Procedure not usable at times due to restricted area activity.

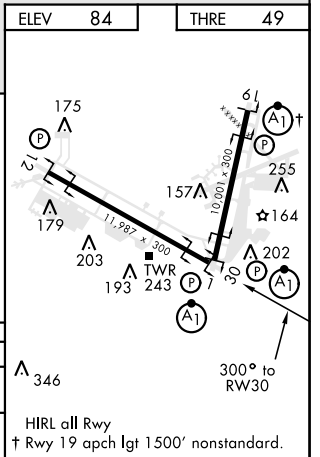
Aircraft holding in excess of 230 KIAS require RADAR monitoring.



EMERG SAFE ALT 100 NM 3600



CATEGORY	A	B	C	D	E
LNAV MDA *	500/24	451 (500-1/2)	500/45	451 (500-7/8)	
CIRCLING	600-1	516 (600-1)	760-2 676 (700-2)	760-2 1/4 676 (700-2 1/4)	760-2 1/2 676 (700-2 1/2)



VALPARAISO, FLORIDA

30°29'N-86°32'W

EGLIN AFB/DESTIN-FT WALTON BEACH (KVPS)

Amdt 1 30MAY13

# RNAV (GPS) RWY 30

SE-3, 25 FEB 2021 to 25 MAR 2021

SE-3, 25 FEB 2021 to 25 MAR 2021