

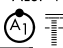
VALPARAISO, FLORIDA

RNAV (GPS) RWY 19

APCH CRS	Rwy ldg	10,001
192°	THRE	60
	Arpt Elev	84

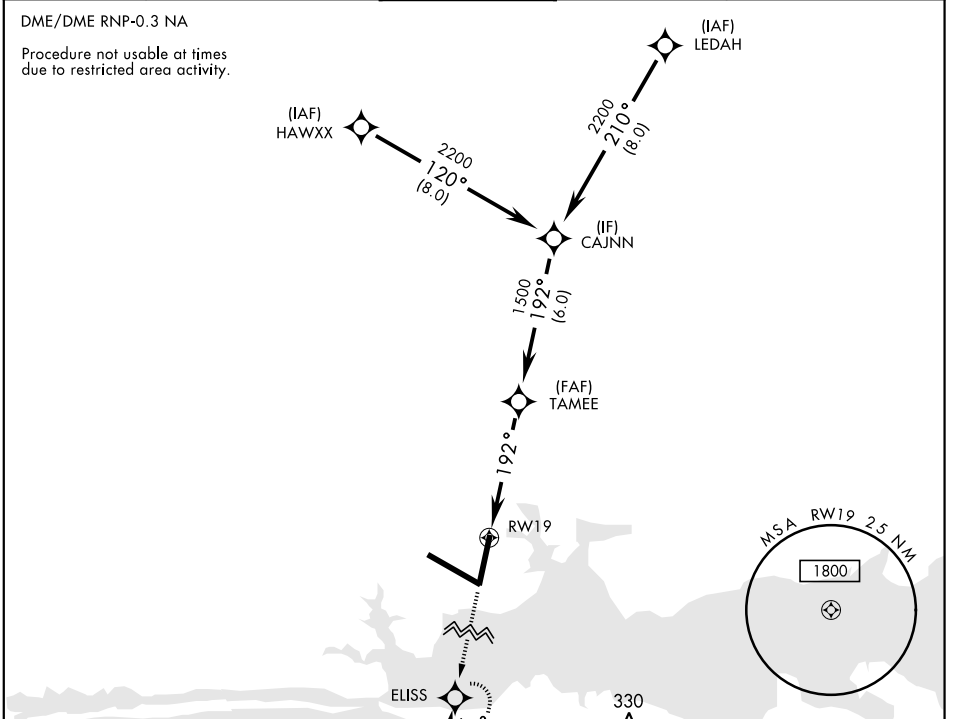
AL-436 [USAF] EGLIN AFB/DESTIN-FT WALTON BEACH (KVPS)

* When ALS inop, increase CAT AB RVR to 55 and vis to 1 mile, CAT CDE vis to 1 3/8 miles.

ALSF-1 

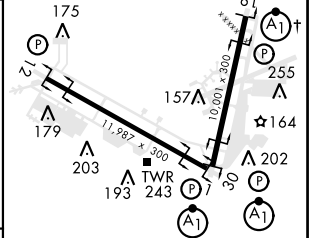
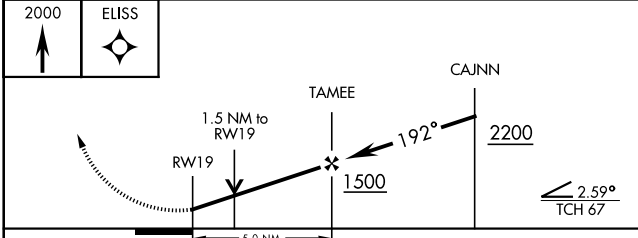
MISSED APPROACH: Climb straight ahead to 2000 to ELISS and hold.

ATIS ★	EGLIN APP CON	EGLIN TOWER	GND CON	CLNC DEL
134.625 273.5	125.1 281.45 271°-089° 132.1 360.6 090°-270°	118.2 353.65	121.8 335.8	127.7 377.2



ELEV	84	THRE	60
------	----	------	----

EMERG SAFE ALT 100 NM 3600



CATEGORY	A	B	C	D	E
RNAV MDA *	540/24	480 (500-1/2)	540/50	480	(500-1)
CIRCLING	600-1	516 (600-1)	760-2 676 (700-2)	760-2 1/4 676 (700-2 1/4)	760-2 1/2 676 (700-2 1/2)

346
Λ

HIRL all Rwy
† Rwy 19 apch lgt 1500' nonstandard.

VALPARAISO, FLORIDA

30°29'N-86°32'W

EGLIN AFB/DESTIN-FT WALTON BEACH (KVPS)

Amdt 1 30MAY13

RNAV (GPS) RWY 19

SE-3, 25 FEB 2021 to 25 MAR 2021

SE-3, 25 FEB 2021 to 25 MAR 2021