

I LS Z or LOC Z RWY 30

LOC I-VPS 109.1	APCH CRS 300°	Rwy Idg 11,987 THRE 49 Arprt Elev 84
---------------------------	-------------------------	---

AL-436 [USAF]

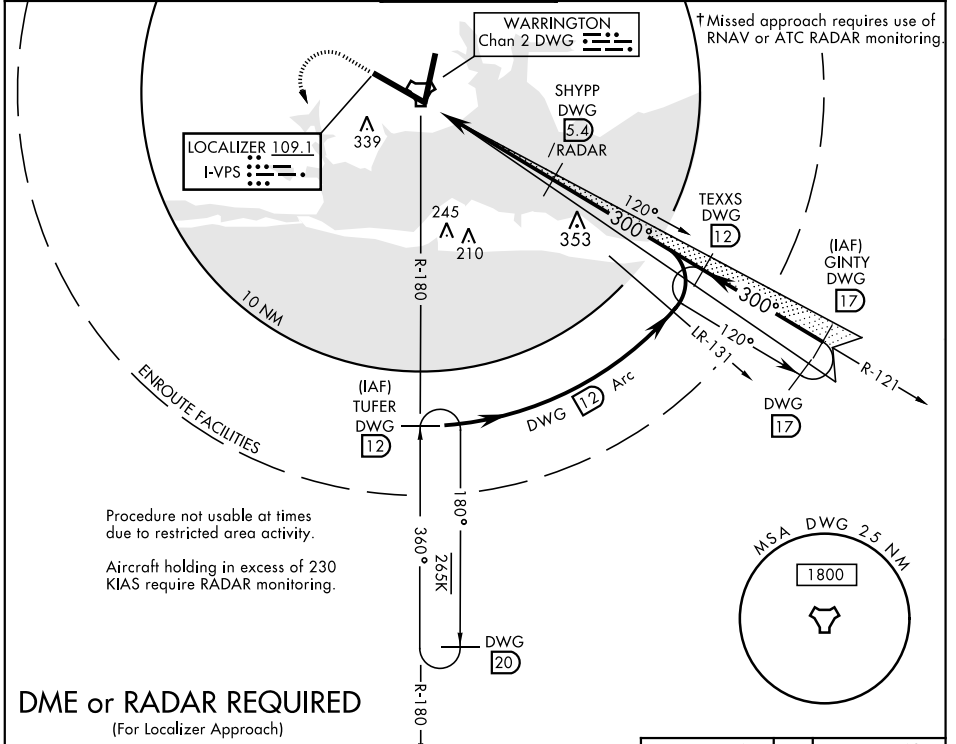
EGLIN AFB/DESTIN-FT WALTON BEACH(KVPS)

* When ALS inop, increase RVR to 40 and vis to ¾ mile.
 ** When ALS inop, increase CAT AB RVR to 55 and vis to 1 mile, CAT CDE RVR to 60 and vis to 1½ miles.



† MISSED APPROACH: Climb straight ahead to 600 then climbing left turn to 2200 direct TUFER DWG R-180/12 DME and hold.

ATIS ★ 134.625 273.5	EGLIN APP CON 125.1 281.45 271°-089° 132.1 360.6 090°-270°	EGLIN TOWER 118.2 353.65	GND CON 121.8 335.8	CLNC DEL 127.7 377.2
--------------------------------	--	------------------------------------	-------------------------------	--------------------------------



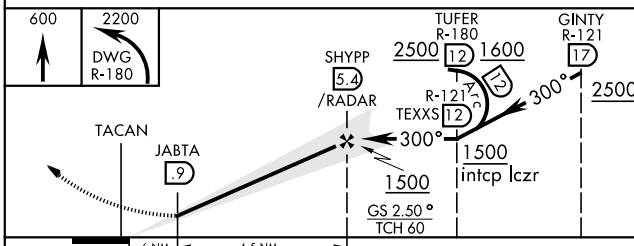
SE-3, 25 FEB 2021 to 25 MAR 2021

SE-3, 25 FEB 2021 to 25 MAR 2021

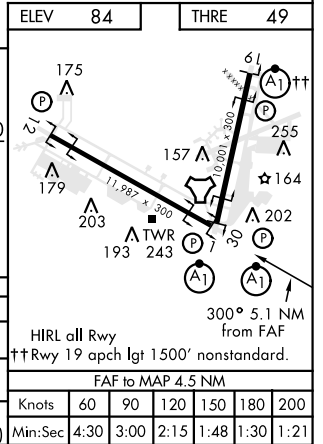
DME or RADAR REQUIRED

(For Localizer Approach)

EMERG SAFE ALT 100 NM 3600



CATEGORY	A	B	C	D	E
S-ILS 30 *	249/24		200	(200-½)	
S-LOC 30 **	440/24	391 (400-½)	440/35		391 (400-¾)
CIRCLING	660-1	576 (600-1)	760-2 676 (700-2)	760-2¼ 676 (700-2¼)	760-2½ 676 (700-2½)



I LS Z or LOC Z RWY 30