

VALPARAISO, FLORIDA

ILS Y or LOC Y RWY 30

LOC I-VPS 109.1 Chan 28	APCH CRS 300°	Rwy Ldg 11,987 THRE 49 Arprt Elev 84
---	-------------------------	---

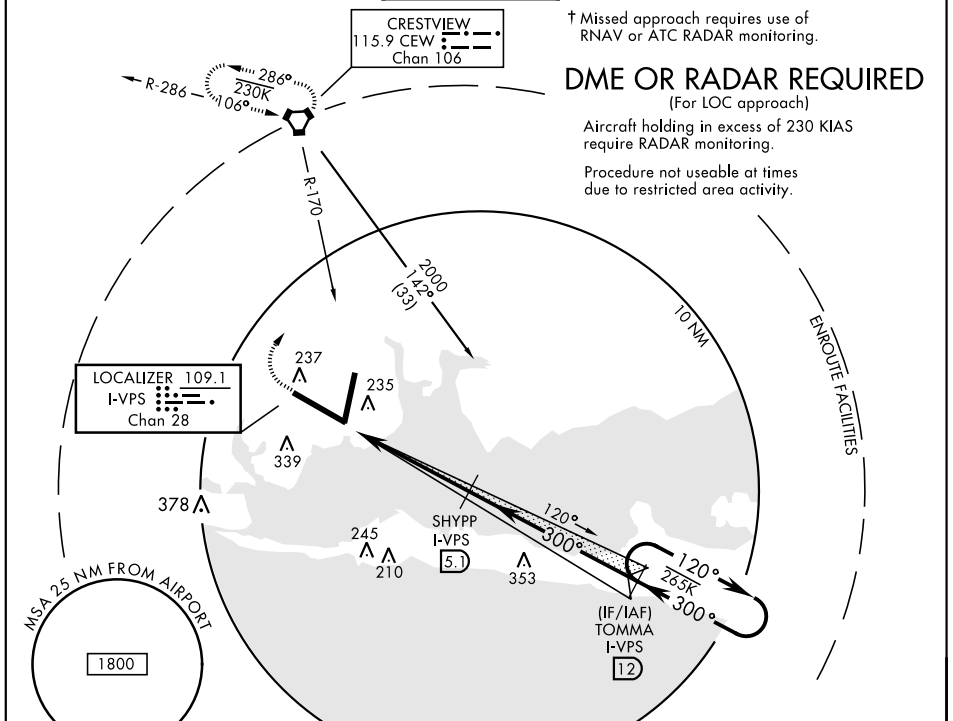
AL-436 [USAF] EGLIN AFB/DESTIN-FT WALTON BEACH(KVPS)

* When ALS inop, increase RVR to 40, vis to 3/4 mile.
 ** When ALS inop, increase RVR to 55, vis to 1 mile.



† MISSED APPROACH: Climb straight ahead to 600, then climbing right turn to 3000, intercept CEW VORTAC R-170 to CEW and hold.

ATIS ★ 134.625 273.5	EGLIN APP CON 125.1 281.45 271°-089° 132.1 360.6 090°-270°	EGLIN TOWER 118.2 353.65	GND CON 121.8 335.8	CINC DEL 127.7 377.2
--------------------------------	--	------------------------------------	-------------------------------	--------------------------------



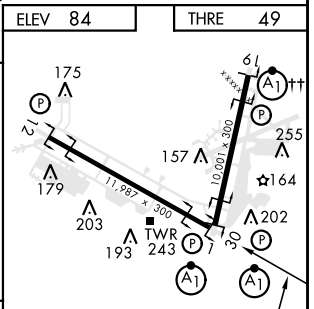
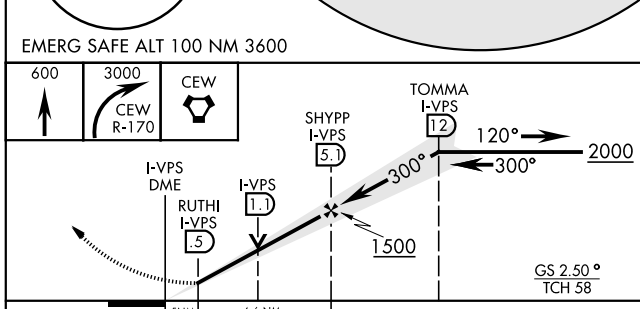
† Missed approach requires use of RNAV or ATC RADAR monitoring.

DME OR RADAR REQUIRED

(For LOC approach)

Aircraft holding in excess of 230 KIAS require RADAR monitoring.

Procedure not useable at times due to restricted area activity.



CATEGORY	A	B	C	D	E
S-ILS 30*	249/24		200	(200-1/2)	
S-LOC 30**	420/24	371 (400-1/2)	420/35	371 (400-5/8)	
CIRCLING	660-1	576 (600-1)	760-2	760-2 1/4	760-2 1/2
			676 (700-2)	676 (700-2 1/4)	676 (700-2 1/2)

HIRL all Rwy
 †† Rwy 19 apch lgt 1500' nonstandard.

FAF to MAP 4.6 NM

Knots	60	90	120	150	180
Min:Sec	4:36	3:04	2:18	1:50	1:32

VALPARAISO, FLORIDA
 Orig 26MAY16

30°29'N-86°32'W

EGLIN AFB/DESTIN-FT WALTON BEACH(KVPS)

ILS Y or LOC Y RWY 30

SE-3, 25 FEB 2021 to 25 MAR 2021

SE-3, 25 FEB 2021 to 25 MAR 2021