

TACAN DWG Chan 2	APCH CRS 360°	Rwy ldg THRE 48 Arpt Elev 84
-------------------------	----------------------	---

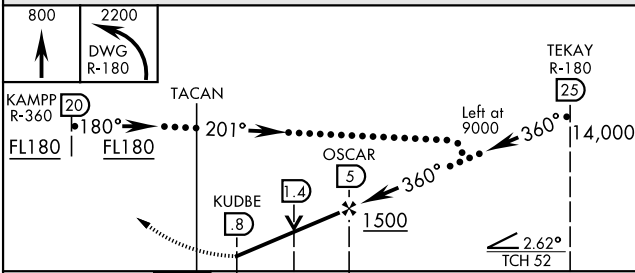
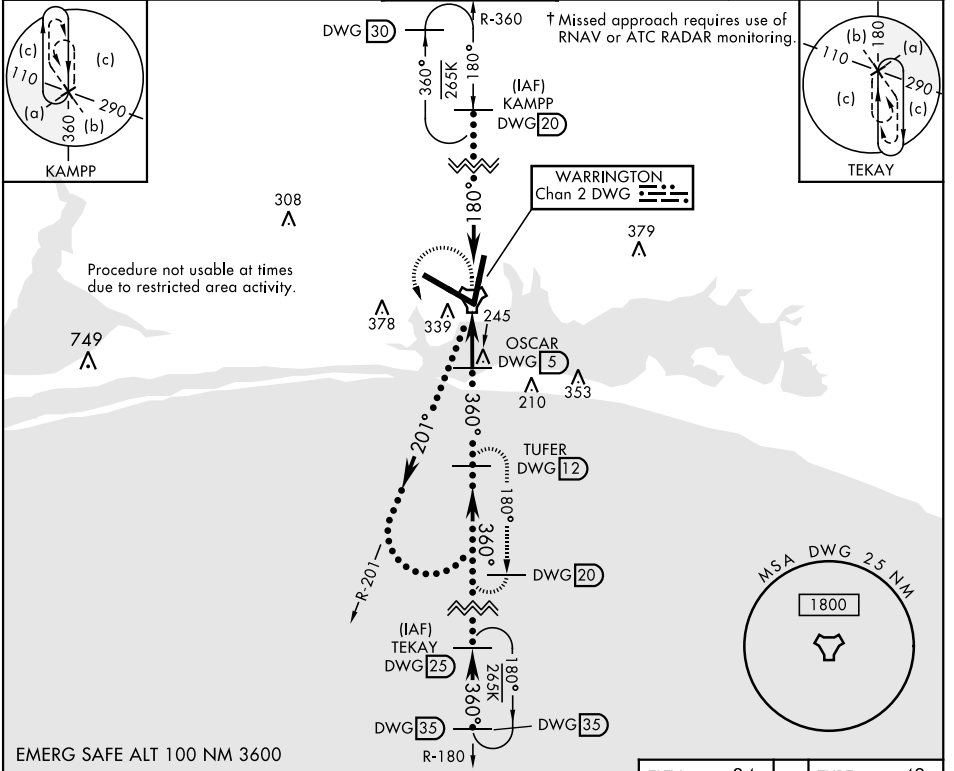
JAL-436 [USAF] EGLIN AFB/DESTIN-FT WALTON BEACH(KVPS)

* When ALS inop, increase CAT CDE vis to 1 3/8 miles.

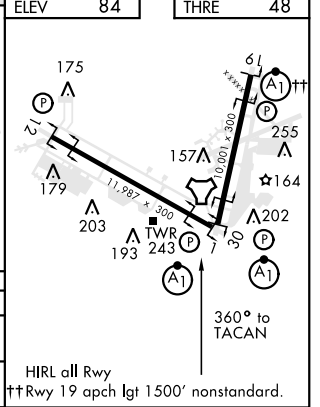
ALS-F1 (A1)

† MISSED APPROACH: Climb to 800 then climbing left turn to 2200 direct TUFER DWG R-180/12 DME and hold.

ATIS ★ 134.625 273.5	EGLIN APP CON 125.1 281.45 271°-089° 132.1 360.6 090°-270°	EGLIN TOWER 118.2 353.65	GND CON 121.8 335.8	CLNC DEL 127.7 377.2
--------------------------------	--	------------------------------------	-------------------------------	--------------------------------



CATEGORY	C		D		E
S-1*	540/50		492	(500-1)	
CIRCLING	760-2 676 (700-2)		760-2 1/4 676 (700-2 1/4)		760-2 1/2 676 (700-2 1/2)



SE-3, 25 FEB 2021 to 25 MAR 2021

SE-3, 25 FEB 2021 to 25 MAR 2021