

HI-ILS or LOC RWY 30

LOC I-VPS 109.1	APCH CRS 300°	Rwy Idg 11,987 THRE 49 Arprt Elev 84
---------------------------	-------------------------	--

JAL-436 [USAF] EGLIN AFB/DESTIN-FT WALTON BEACH (KVPS)

*When ALS inop, increase CAT CDE RVR to 40 and vis to ¾ mile.
 **When ALS inop, increase CAT CDE RVR to 60 and vis to 1½ miles.



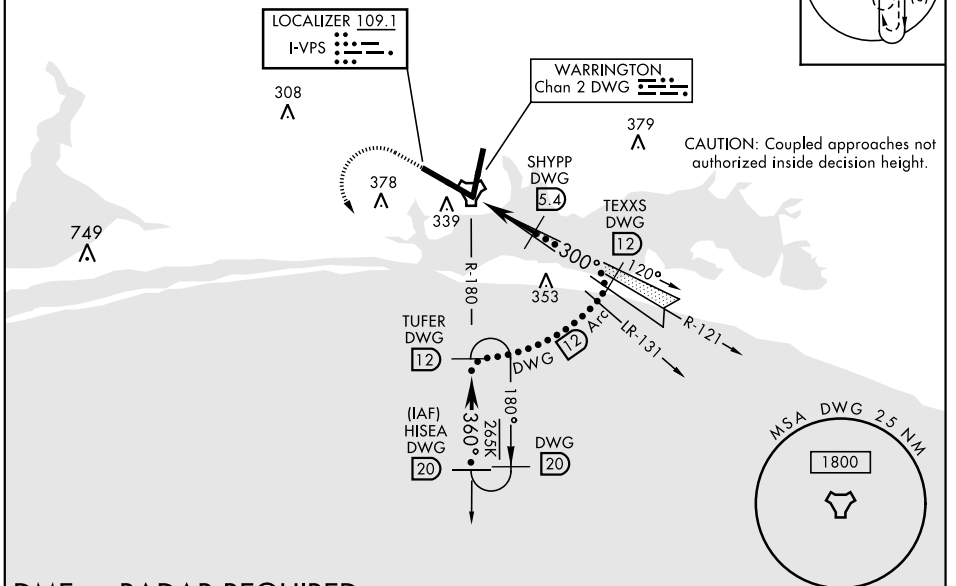
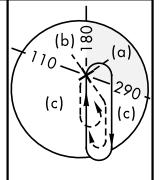
† MISSED APPROACH: Climb straight ahead to 600 then climbing left turn to 2200 direct TUFER/12 DME and hold.

ATIS ★ 134.625 273.5	EGLIN APP CON 125.1 281.45 271°-089° 132.1 360.6 090°-270°	EGLIN TOWER 118.2 353.65	GND CON 121.8 335.8	CLNC DEL 127.7 377.2
--------------------------------	--	------------------------------------	-------------------------------	--------------------------------

Aircraft holding in excess of 230 KIAS require RADAR monitoring.
 Procedure not usable at times due to restricted area activity.

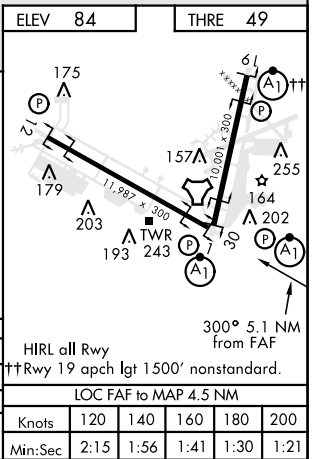
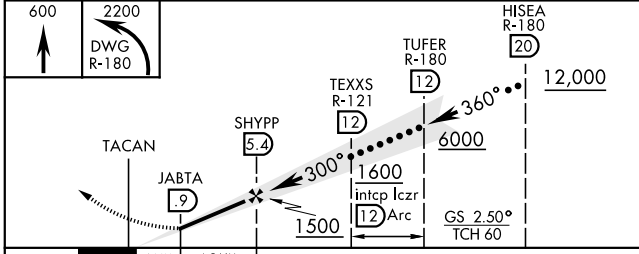
645
Λ

↑ Missed approach requires use of RNAV or ATC RADAR monitoring.



DME or RADAR REQUIRED
 (For LOC approach)

EMERG SAFE ALT 100 NM 3600



CATEGORY	C		D		E	
	760-2 676 (700-2)	440/35	760-2¼ 676 (700-2¼)	200 (200-½)	391 (400-⅝)	760-2½ 676 (700-2½)
S-ILS 30*	249/24		200 (200-½)			
S-LOC 30**	440/35		391 (400-⅝)			
CIRCLING	760-2 676 (700-2)	440/35	760-2¼ 676 (700-2¼)	200 (200-½)	391 (400-⅝)	760-2½ 676 (700-2½)

VALPARAISO, FLORIDA 30°29'N-86°32'W EGLIN AFB/DESTIN-FT WALTON BEACH (KVPS)

HI-ILS or LOC RWY 30

SE-3, 25 FEB 2021 to 25 MAR 2021

SE-3, 25 FEB 2021 to 25 MAR 2021