

HI-ILS or LOC RWY 19

LOC I-CAH 109.1	APCH CRS 192°	Rwy Idg THRE 10,001 Arprt Elev 60 84
---------------------------	-------------------------	--

JAL-436 [USAF] EGLIN AFB/DESTIN-FT WALTON BEACH(KVPS)

* When ALS inop, increase CAT CDE RVR to 40 and vis to 3/4 mile.
 ** When ALS inop, increase CAT CD RVR to 60 and vis to 1 1/2 miles, CAT E vis to 1 1/4 miles.

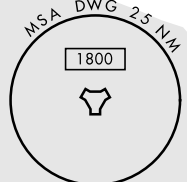
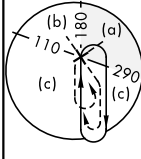
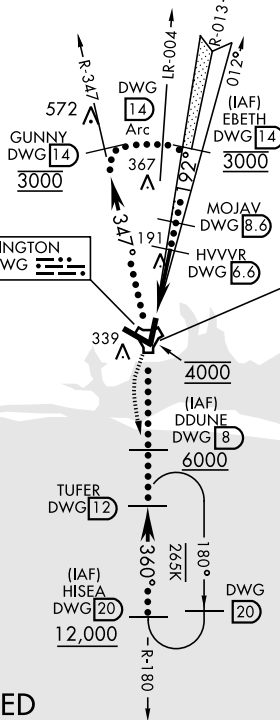


MISSED APPROACH: Climb to 2200 on the DWG R-180 to TUFER/12 DME and hold.

ATIS ★ 134.625 273.5	EGLIN APP CON 125.1 281.45 271°- 089° 132.1 360.6 090°- 270°	EGLIN TOWER 118.2 353.65	GND CON 121.8 335.8	CLNC DEL 127.7 377.2
--------------------------------	--	------------------------------------	-------------------------------	--------------------------------

Aircraft holding in excess of 230 KIAS require RADAR monitoring.

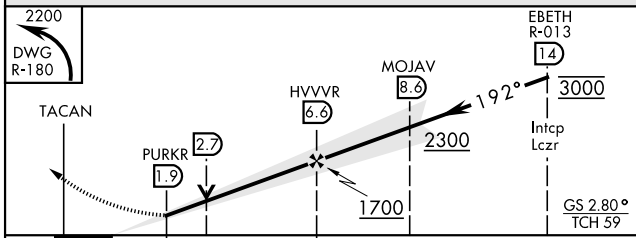
Procedure not usable at times due to restricted area activity.



DME or RADAR REQUIRED

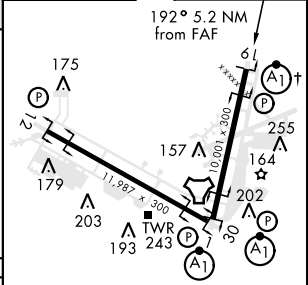
(For Localizer approach)

EMERG SAFE ALT 100 NM 3600



CATEGORY	C	D	E
S-ILS 19*	260/24	200 (200-1/2)	
S-LOC 19**	480/40	420 (400-3/4)	
CIRCLING	760-2 676 (700-2)	760-2 1/4 676 (700-2 1/4)	760-2 1/2 676 (700-2 1/2)

ELEV 84	THRE 60
---------	---------



HIRL all Rwy
 † Rwy 19 apch lgt 1500' nonstandard.

FAF to MAP 4.7 NM					
Knots	120	140	160	180	200
Min:Sec	2:21	2:01	1:46	1:34	1:25

HI-ILS or LOC RWY 19

SE-3, 25 FEB 2021 to 25 MAR 2021

SE-3, 25 FEB 2021 to 25 MAR 2021