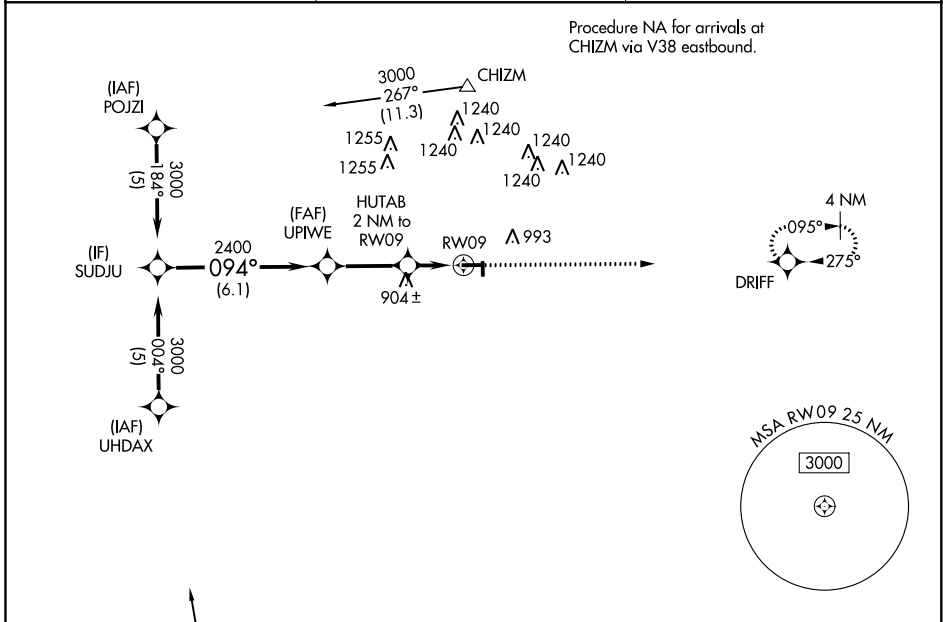


APP CRS	Rwy Idg	4000
094°	TDZE	784
	Apt Elev	785

RNAV (GPS) RWY 9

VAN WERT COUNTY (VNW)

<p>▼ DME/DME RNP-0.3 NA. When local altimeter setting not received, use Fort Wayne altimeter setting and increase all MDA 80 feet and increase LNAV Cat C and D visibility ¼ mile and Circling Cat C visibility ¼ mile. VDP NA when using Fort Wayne altimeter setting.</p>	<p>MISSED APPROACH: Climb to 3000 direct DRIFT and hold.</p>	
	<p>AWOS-3 125.175</p>	<p>FORT WAYNE APP CON 127.2 284.6</p>



EC-2, 25 FEB 2021 to 25 MAR 2021

EC-2, 25 FEB 2021 to 25 MAR 2021

ELEV	785	TDZE	784
------	-----	------	-----

Procedure NA for arrivals at BOOKS via V55 southeast bound.

Profile view details: SUDJU at 3000 ft, UPIWE at 2400 ft, RWY 09 at 1460 ft. Descent angle 3.04° TCH 40. Distances: 6.1 NM to UPIWE, 2.9 NM to RWY 09, 1.1 NM to RWY 09.

CATEGORY	A	B	C	D
LNAV MDA	1160-1	376 (400-1)		1160-1¼ 376 (400-1¼)
CIRCLING	1340-1	555 (600-1)	1340-1½ 555 (600-1½)	1340-2 555 (600-2)

MIRL Rwy 9-27 0
REIL Rwy 9 and 27 0