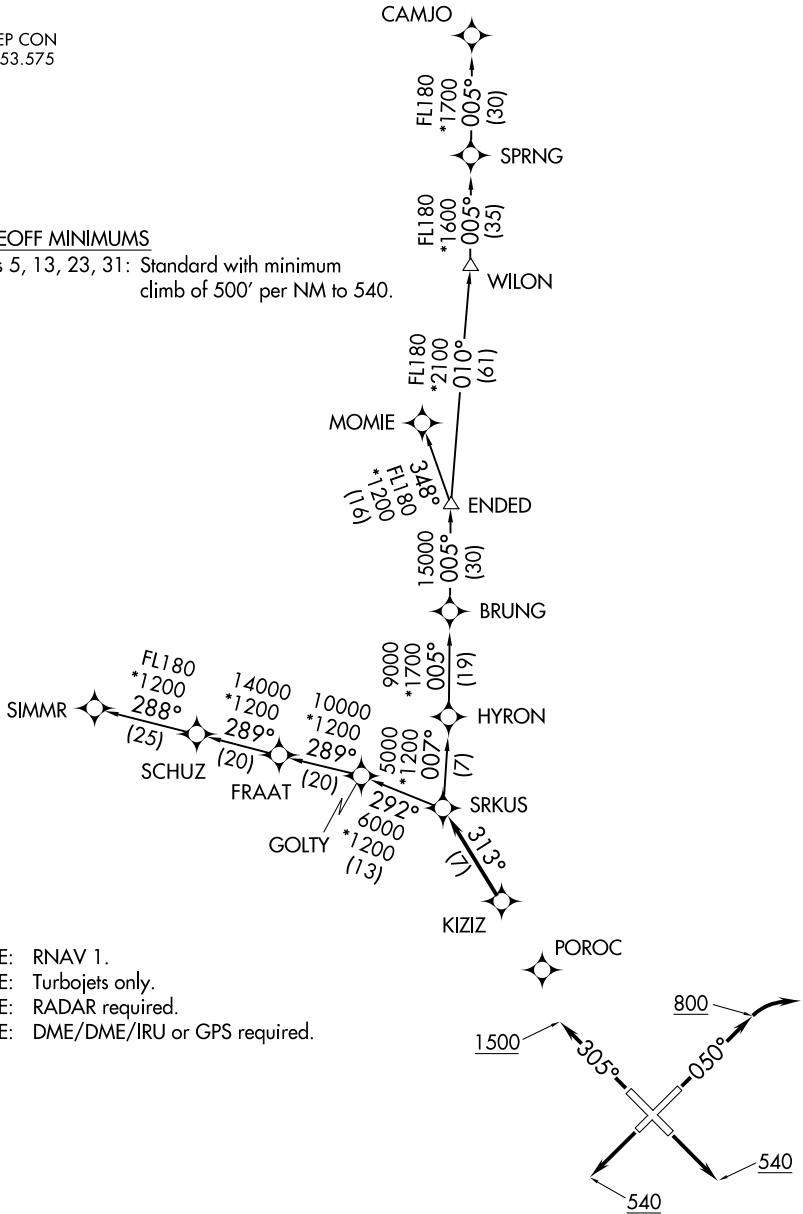


SRKUS FOUR DEPARTURE (RNAV)

AWOS-3
119.275
CLNC DEL
118.25
TAMPA DEP CON
119.65 353.575

TAKEOFF MINIMUMS

Rwys 5, 13, 23, 31: Standard with minimum climb of 500' per NM to 540.



- NOTE: RNAV 1.
- NOTE: Turbojets only.
- NOTE: RADAR required.
- NOTE: DME/DME/IRU or GPS required.

NOTE: Chart not to scale.

(NARRATIVE ON FOLLOWING PAGE)

SE-3, 25 FEB 2021 to 25 MAR 2021

SE-3, 25 FEB 2021 to 25 MAR 2021

SRKUS FOUR DEPARTURE (RNAV)

(SRKUS4.SRKUS) 03JAN19

VENICE, FLORIDA
VENICE MUNI (VNC)