

VENICE, FLORIDA

AL-5960 (FAA)

19059

WAAS CH 86423 W13A	APP CRS 140°	Rwy Idg 4999 TDZE 16 Apt Elev 18
--	------------------------	---

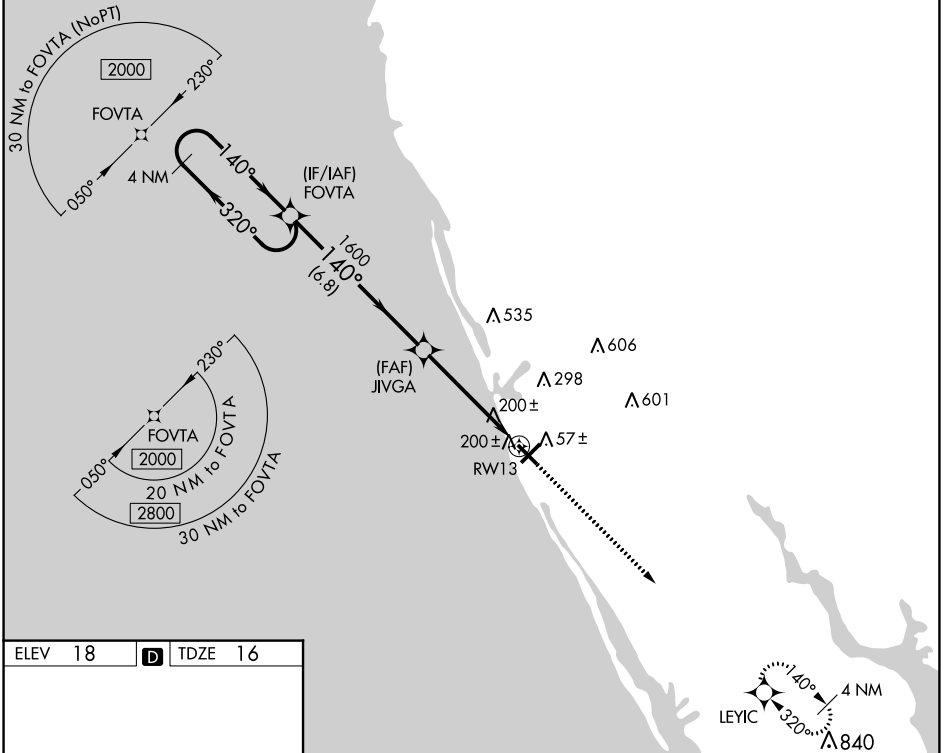
RNAV (GPS) RWY 13

VENICE MUNI (VNC)

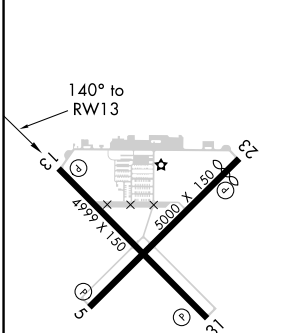
⚠ DME/DME RNP-0.3 NA. Helicopter visibility reduction below 3/4 SM NA.
⚠ When local altimeter setting not received, use Sarasota altimeter setting and increase all MDA 60 feet and Circling Cat C visibility 1/4 mile.

MISSED APPROACH: Climb to 2000 direct LEYIC and hold.

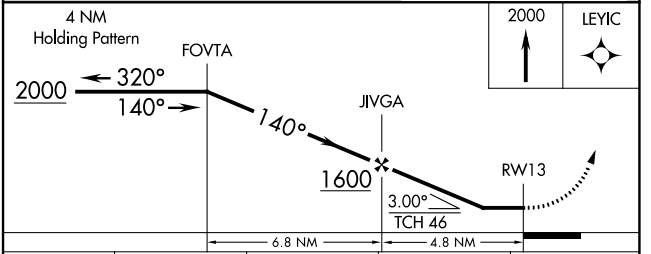
AWOS-3 119.275	TAMPA APP CON 119.65 353.575	CLNC DEL 118.075	UNICOM 122.725 (CTAF) 0
--------------------------	--	----------------------------	-----------------------------------



ELEV 18	D	TDZE 16
---------	----------	---------



MIRL Rwy 5-23 and 13-31 **0**
 REIL Rwy 5-23, and 13-31 **0**



CATEGORY	A	B	C	D
LP MDA	460-1	444 (500-1)	460-1 3/8	444 (500-1 3/8)
LNAV MDA	460-1	444 (500-1)	460-1 3/8	444 (500-1 3/8)
C CIRCLING	500-1	482 (500-1)	700-2 682 (700-2)	920-3 902 (1000-3)

VENICE, FLORIDA
 Amdt 1D 10DEC15

27°04'N-82°26'W

RNAV (GPS) RWY 13

SE-3, 25 FEB 2021 to 25 MAR 2021

SE-3, 25 FEB 2021 to 25 MAR 2021