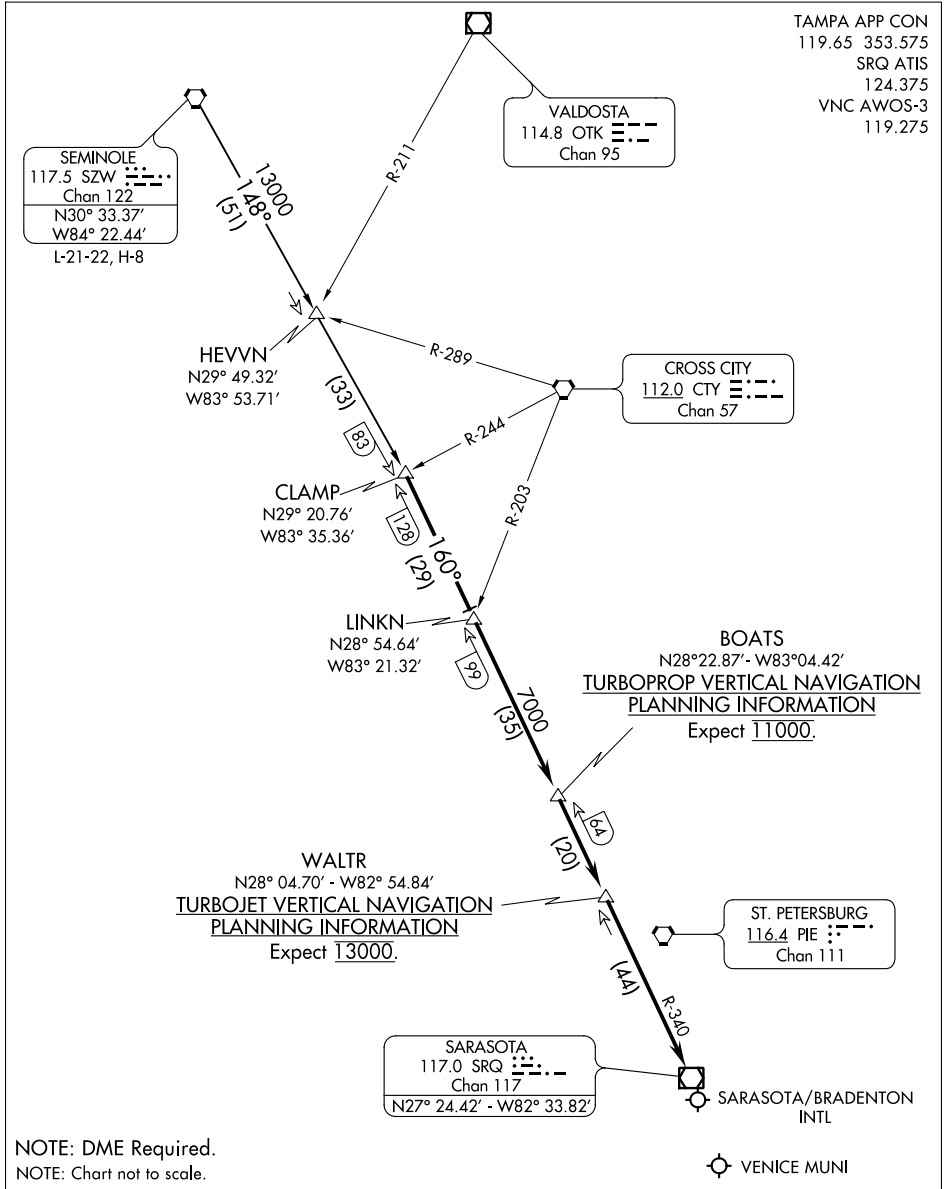


CLAMP SEVEN ARRIVAL

SARASOTA/BRADENTON, FLORIDA



SE-3, 25 FEB 2021 to 25 MAR 2021

SE-3, 25 FEB 2021 to 25 MAR 2021

NOTE: DME Required.

NOTE: Chart not to scale.

SEMINOLE TRANSITION (SZW.CLAMP7): From over SZW VORTAC via SZW R-148 to CLAMP INT. Thence . . .

. . . From over CLAMP INT via SRQ R-340 to SRQ VOR/DME. Expect RADAR vectors to final approach course after WALTR.

CLAMP SEVEN ARRIVAL

SARASOTA/BRADENTON, FLORIDA