

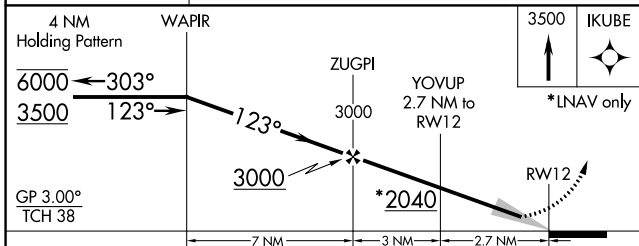
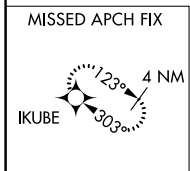
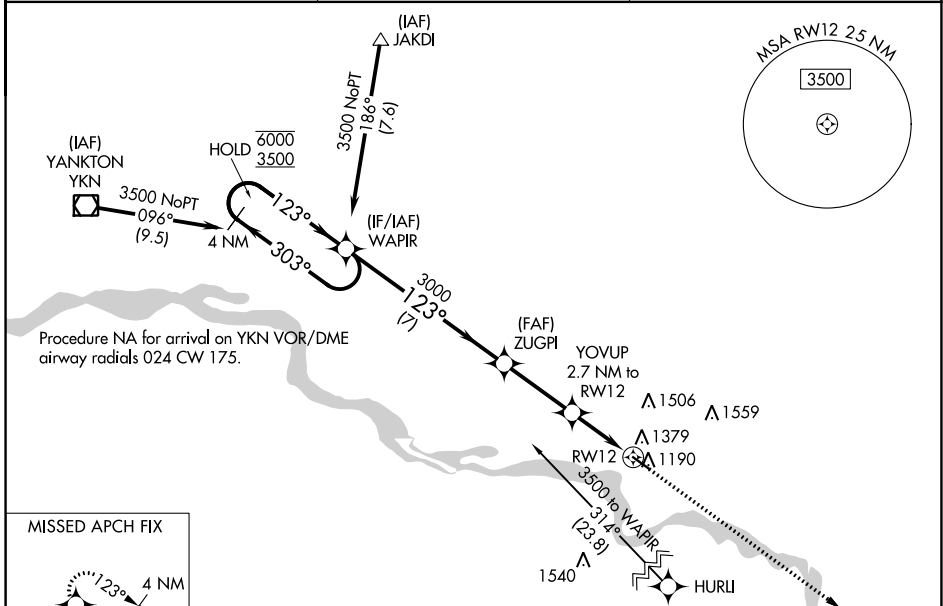
WAAS CH 72836 W12A	APP CRS 123°	Rwy Idg 4105 TDZE 1147 Apt Elev 1147
----------------------------------------	------------------------	-----------------------------------------------------------------

RNAV (GPS) RWY 12

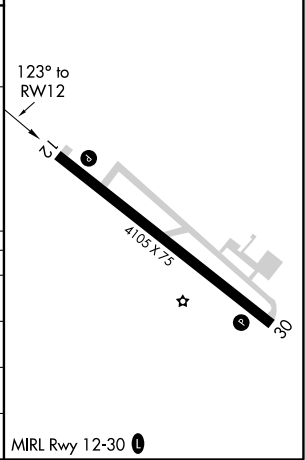
HAROLD DAVIDSON FIELD (VMR)

RNP APCH.		MISSED APPROACH: Climb to 3500 direct IKUBE and hold.
▼ ▲ NA	Baro-VNAV NA. Use Yankton altimeter setting.	

YKN AWOS-3PT 119.05	SIoux CITY APP CON ★ 124.6 307.0	AUNICOM 122.8 (CTAF)
-------------------------------	--------------------------------------------	--------------------------------



ELEV 1147	TDZE 1147
-----------	-----------



CATEGORY	A	B	C	D
LPV DA	1470-1 323 (400-1)			NA
LNAV/VNAV DA	1659-1½ 512 (600-1½)			NA
LNAV MDA	1700-1 553 (600-1)		1700-1½ 553 (600-1½)	NA
CIRCLING	1760-1 613 (700-1)		1900-2¼ 753 (800-2¼)	NA

NC-1, 25 FEB 2021 to 25 MAR 2021

NC-1, 25 FEB 2021 to 25 MAR 2021