

VORTAC VLA 114.3 Chan 90	APP CRS 179°	Rwy Idg 3751 TDZE 534 Apt Elev 537
--	------------------------	---

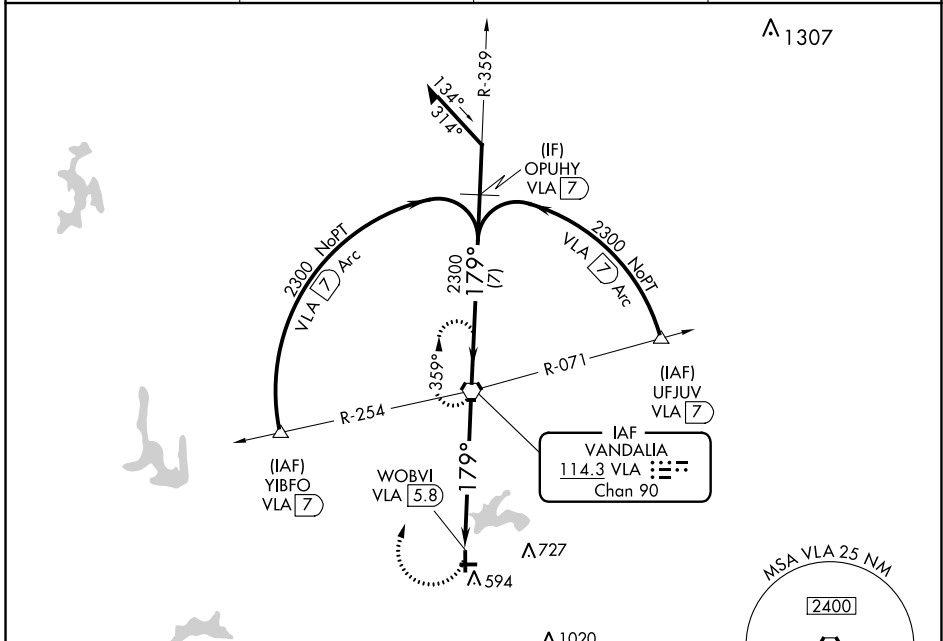
VOR RWY 18

VANDALIA MUNI (VLA)

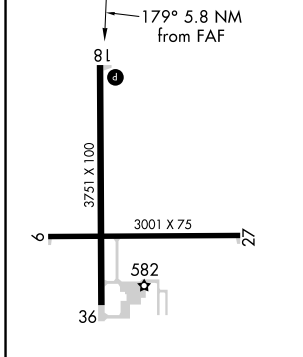
▲ NA Use Salem altimeter setting, when not received use Centralia altimeter setting and increase all MDA 20 feet.
Helicopter visibility reduction below 1 SM NA.

MISSED APPROACH: Climbing right turn to 2300 direct VLA VORTAC and hold.

AWOS-A 122.8	SLO AWOS-3 118.525	KANSAS CITY CENTER 124.3 269.15	UNICOM 122.8 (CTAF) 0
------------------------	------------------------------	---	---------------------------------

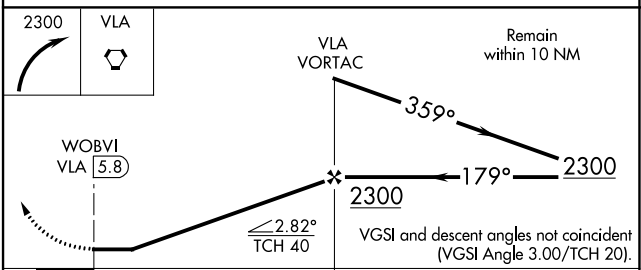


ELEV 537	TDZE 534
-----------------	-----------------



REIL Rwy 18, 27 and 36
MIRL Rwy 9-27 and 18-36

FAF to MAP 5.8 NM					
Knots	60	90	120	150	180
Min:Sec	5:48	3:52	2:54	2:19	1:56



CATEGORY	A	B	C	D
S-18	1140-1	606 (700-1)	1140-1¾ 606 (700-1¾)	NA
C CIRCLING	1160-1	623 (700-1)	1160-1¾ 623 (700-1¾)	NA

EC-3, 25 FEB 2021 to 25 MAR 2021

EC-3, 25 FEB 2021 to 25 MAR 2021