

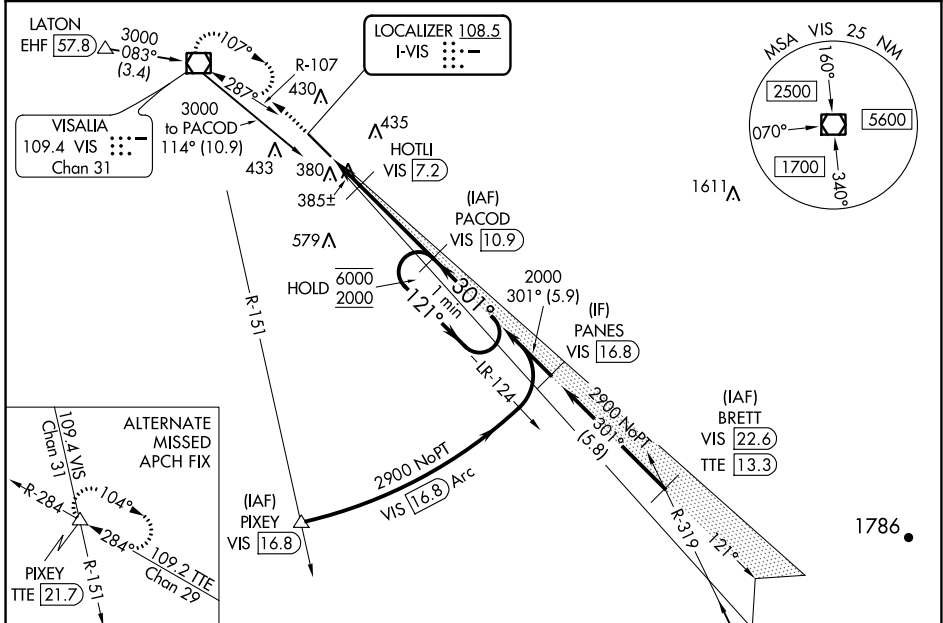
ILS or LOC RWY 30

VISALIA MUNI (VIS)

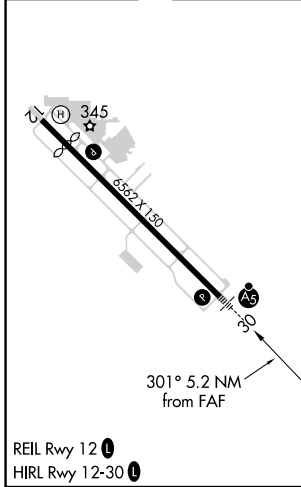
LOC I-VIS 108.5	APP CRS 301°	Rwy Idg 5635
		TDZE 295
		Apt Elev 295

DME required.	MALS R	MISSED APPROACH: Climb to 1000 then climbing left turn to 3000 direct VIS VOR/DME and hold, continue climb-in-hold to 3000.
<p>▼ DME from VIS VOR/DME.</p> <p>▲ Simultaneous reception of I-VIS and VIS DME required.</p> <p>For inop ALS, increase S-LOC 30 Cat C/D visibility to 1 SM.</p>		

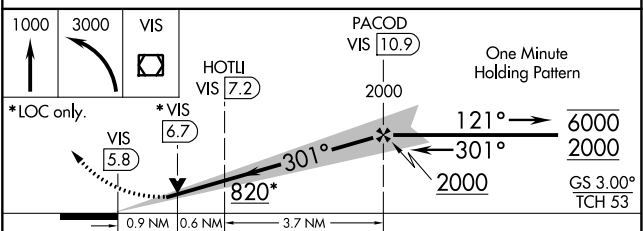
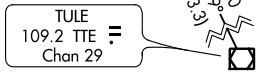
AWOS-3PT 119.925	FRESNO APP CON 118.5	CLNC DEL 118.5	UNICOM 123.05 (CTAF)
----------------------------	--------------------------------	--------------------------	--------------------------------



ELEV 295	D	TDZE 295
----------	----------	----------



Procedure NA for arrivals at TTE VOR/DME on V165-459 southeast bound.



CATEGORY	A	B	C	D
S-ILS 30	502-½		207 (300-½)	
S-LOC 30	640-½	345 (400-½)	640-⅝	345 (400-⅝)
C CIRCLING	720-1 425 (500-1)	760-1 465 (500-1)	760-1½ 465 (500-1½)	940-2 645 (700-2)

SW-2, 25 FEB 2021 to 25 MAR 2021

SW-2, 25 FEB 2021 to 25 MAR 2021