

RNAV (GPS) RWY 21

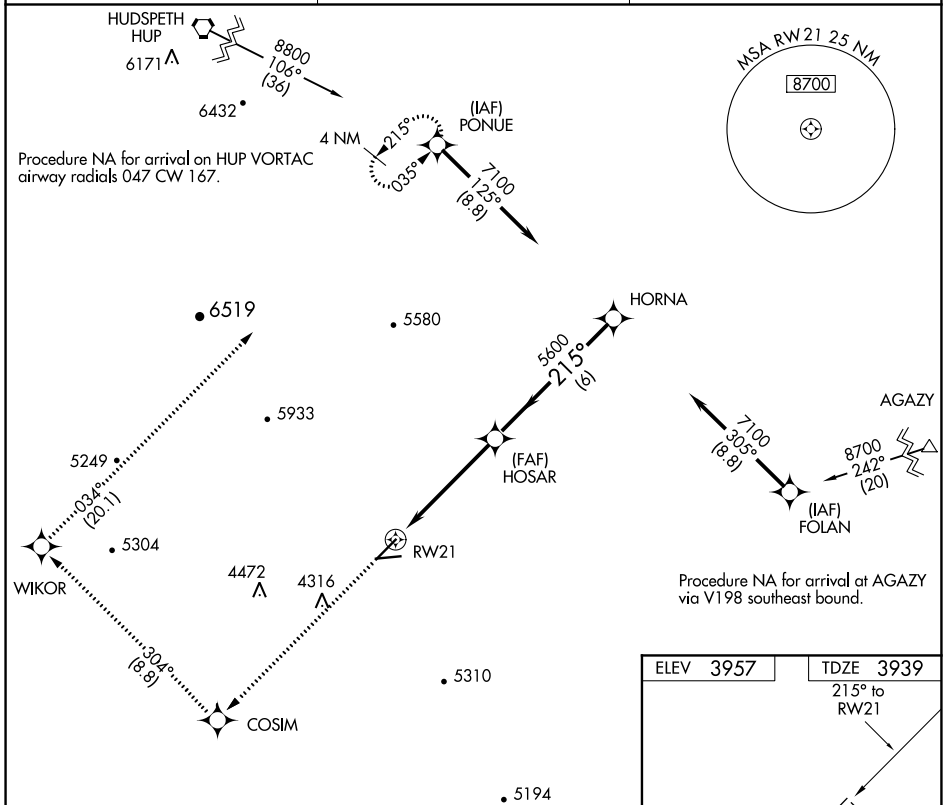
CULBERSON COUNTY (VHN)

APP CRS 215°	Rwy Idg TDZE Apt Elev	6005 3939 3957
------------------------	-----------------------------	---

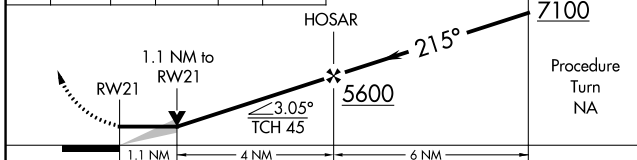
Obtain local altimeter setting on CTAF; when not received, procedure NA. DME/DME RNP-0.3 NA. Night landing: Rwy 7, 25 NA.

MISSED APPROACH: Climb to 8800 direct COSIM WP, and via 304° track to WIKOR WP and via 034° track to PONUE WP and hold.

AWOS-3PT 119.925	ALBUQUERQUE CENTER 135.875 292.15	CTAF 122.9
-----------------------------------	--	-----------------------------



8800	COSIM	tr 304°	WIKOR	tr 034°	PONUE	VGSI and descent angles not coincident (VGSI angle 3.00/TCH 24).
------	-------	---------	-------	---------	-------	--



ELEV 3957	TDZE 3939
215° to RWY 21	

MIRL Rwy 3-21 and 7-25

CATEGORY	A	B	C	D
LNVA MDA	4300-1 361 (400-1)		4300-1¼ 361 (400-1¼)	
CIRCLING	4440-1 483 (500-1)	4460-1 503 (600-1)	4480-1½ 523 (600-1½)	4840-3 883 (900-3)

SC-3, 25 FEB 2021 to 25 MAR 2021

SC-3, 25 FEB 2021 to 25 MAR 2021