

RNAV (GPS) RWY 25

VIDALIA RGNL (VDI)

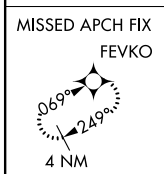
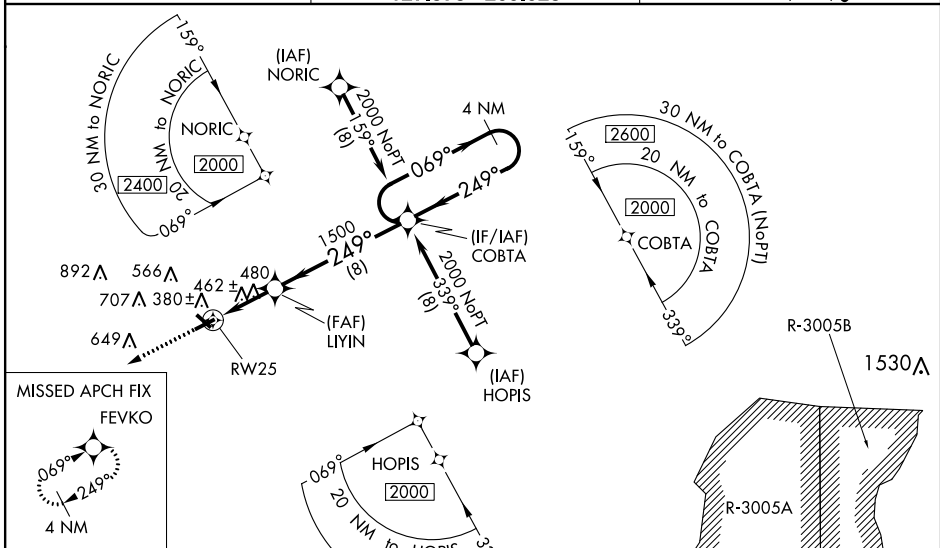
WAAS CH 69609 W25A	APP CRS 249°	Rwy Idg TDZE Apt Elev	6002 273 274
--	------------------------	-----------------------------	---

⚠ DME/DME RNP-0.3 NA. Night Landing Rwy 32 NA. VDP and Baro-VNAV NA when using Baxley altimeter setting. When local altimeter setting not received, use Baxley altimeter setting and increase all DA 77 feet and all MDA 80 feet; increase LNAV/VNAV all Cats visibility ¼ mile, LNAV Cats C/D visibility ½ mile, and Circling Cats C/D visibility ¼ mile. For inop MALSR, increase LNAV/VNAV all Cats visibility to 1 mile and LNAV Cats C/D visibility to 1½ mile. For inop MALSR when using Baxley altimeter setting, increase LPV all Cats visibility to ½ mile, LNAV/VNAV all Cats visibility to 1¼ mile. For uncompensated Baro-VNAV systems, LNAV/VNAV NA below -1.5°C (5°F) or above 54°C (130°F)

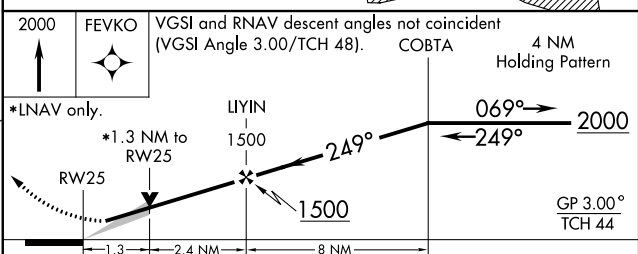
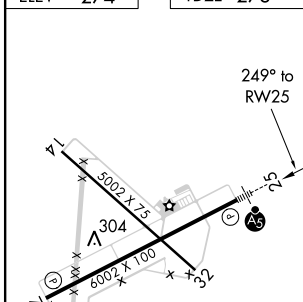
MALSR

MISSED APPROACH:
Climb to 2000 direct FEVKO and hold.

AWOS-3 119.925	JACKSONVILLE CENTER 127.575 269.025	UNICOM 122.8 (CTAF)
--------------------------	---	-------------------------------



ELEV 274	TDZE 273
-----------------	-----------------



CATEGORY	A	B	C	D
LPV DA		473-½	200 (200-½)	
LNAV/VNAV DA		580-⅝	307 (400-⅝)	
LNAV MDA	740-½	467 (500-½)	740-1	467 (500-1)
C CIRCLING	740-1	466 (500-1)	920-1¾ 646 (700-1¾)	1060-2½ 786 (800-2½)

HIRL Rwy 7-25
REIL Rwy 7 and 25

VIDALIA RGNL (VDI) RNAV (GPS) RWY 25

SE-4, 25 FEB 2021 to 25 MAR 2021

SE-4, 25 FEB 2021 to 25 MAR 2021