

| | | |
|--|------------------------|---|
| WAAS CH 82709 W13A | APP CRS 128° | Rwy ldg 9111 TDZE 115 Apt Elev 115 |
|--|------------------------|---|

RNAV (GPS) RWY 13L

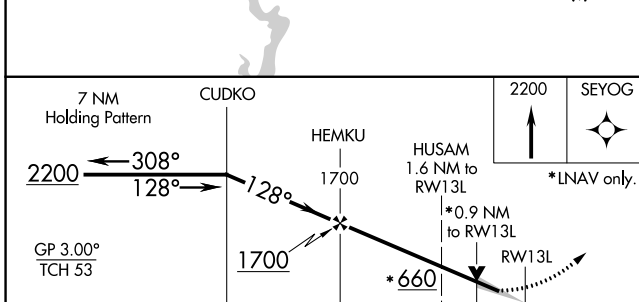
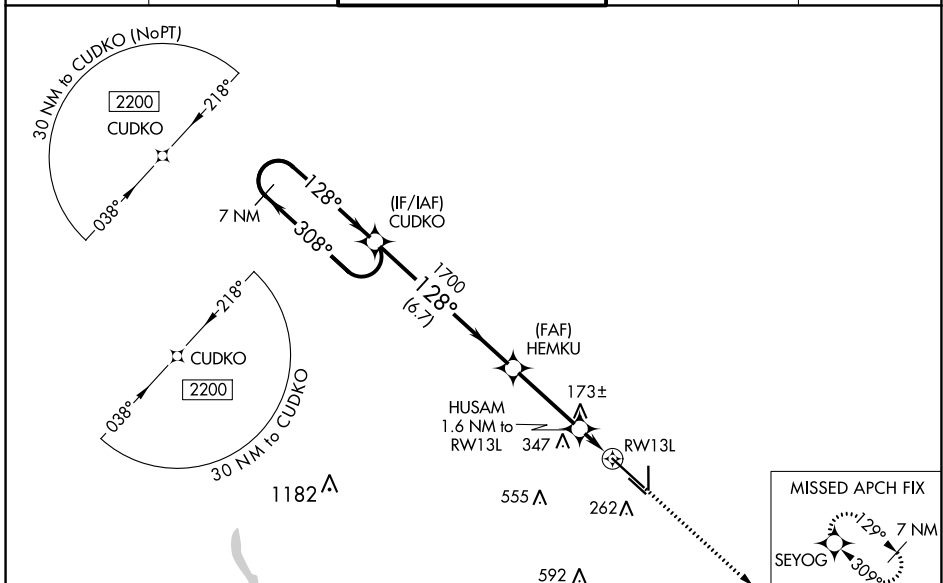
VICTORIA RGNL (VCT)

⚠ Baro-VNAV NA when using Port Lavaca altimeter setting. For uncompensated Baro-VNAV systems, LNAV/VNAV NA below -15°C (5°F) or above 43°C (109°F). When local altimeter setting not received, use Port Lavaca altimeter setting and increase all DA 52 feet and all MDA 60 feet. Increase LNAV Cats C/D/E visibility to ½ mile. DME/DME RNP-0.3 NA. VDP NA with Port Lavaca altimeter setting. For inop MALSR, increase LPV and LNAV/VNAV Cat E visibility to ¾ mile and LNAV Cat E visibility to 1 mile. For inop MALSR when using Port Lavaca altimeter setting, increase LPV Cat E visibility to ¾ mile, LNAV/VNAV all Cats visibility to 1 mile and LNAV Cats C/D/E visibility to 1½ mile.

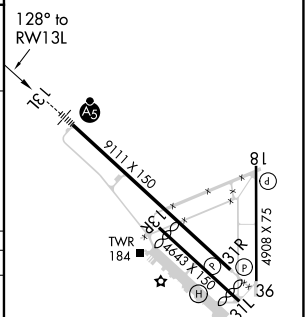
MALSR

MISSED APPROACH:
Climb to 2200
direct SEYOG
and hold.

| | | | | |
|------------------------|---------------------------------------|--|----------------------------------|------------------------|
| ATIS 119.025 | HOUSTON CENTER 135.05 353.6 | VICTORIA TOWER ★ 126.075 (CTAF) 257.95 | GND CON 120.525 239.25 | UNICOM 122.7 |
|------------------------|---------------------------------------|--|----------------------------------|------------------------|



| | |
|----------|-------------------|
| ELEV 115 | D TDZE 115 |
|----------|-------------------|



| CATEGORY | A | B | C | D | E |
|--------------|-------|-------------|------------------------|----------------------|----|
| LPV DA | | 315-½ | 200 (200-½) | | |
| LNAV/VNAV DA | | 365-½ | 250 (300-½) | | |
| LNAV MDA | | 440-½ | 325 (400-½) | | |
| CIRCLING | 580-1 | 465 (500-1) | 580-1½ 465 (500-1½) | 680-2 565 (600-2) | NA |

MIRL Rwy 18-36
REIL Rwy 18 and 36
HIRL Rwy 13L-31R **Ⓢ**

SC-5, 25 FEB 2021 to 25 MAR 2021

SC-5, 25 FEB 2021 to 25 MAR 2021