

# ILS or LOC/DME RWY 30

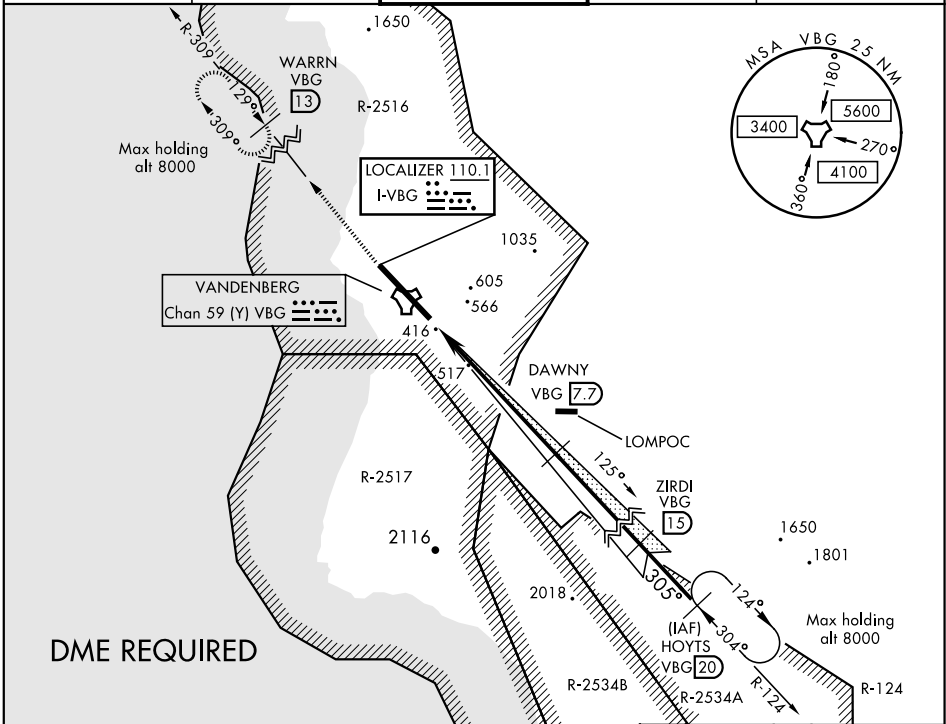
LOC I-VBG <b>110.1</b>	APCH CRS <b>305°</b>	Rwy Ldg <b>15,000</b> TDZE <b>368</b> Arpt Elev <b>368</b>
---------------------------	-------------------------	--

AL-770 [USAF]

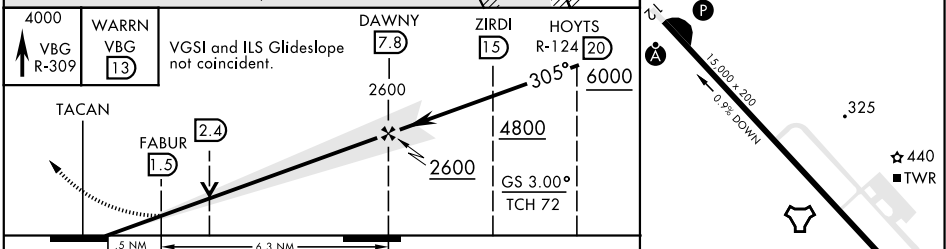
VANDENBERG AFB (KVBG)

<p>▼ * When ALS inop, increase CAT AB RVR to 40 and vis to ¾ mile. ** When ALS inop, increase CAT AB RVR to 55 and vis to 1 mile, CAT CDE vis to 1½ miles.</p>	<p>ALSF-2 [Symbol]</p>	<p>MISSED APPROACH: Climb out VBG TACAN R-309 to WARRN and hold. Continue climb in hold maintain 4000.</p>
--	----------------------------	--

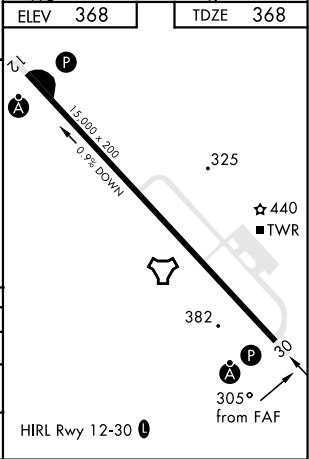
ATIS <b>133.125 257.975</b>	SANTA BARBARA APP/DEP CON <b>124.15 327.8</b>	VANDENBERG TOWER ★ <b>124.95 0</b> (CTAF) <b>326.2</b>	GND CON <b>121.75 275.8</b>	CLNC DEL <b>121.75 275.8</b>
--------------------------------	---	---	--------------------------------	---------------------------------



ELEV 368	TDZE 368
----------	----------



CATEGORY	A	B	C	D	E
S-ILS 30 *	568/24		200	(200-½)	
S-LOC/DME 30 **	900/24	532 (600-½)	900/55	532 (600-1)	
CIRCLING	980-1 612 (700-1)	1000-1 632 (700-1)	1020-1¾ 652 (700-1¾)	1180-2¾ 812 (900-2¾)	1560-3 1192(1200-3)



# ILS or LOC/DME RWY 30

SW-3, 25 FEB 2021 to 25 MAR 2021

SW-3, 25 FEB 2021 to 25 MAR 2021