

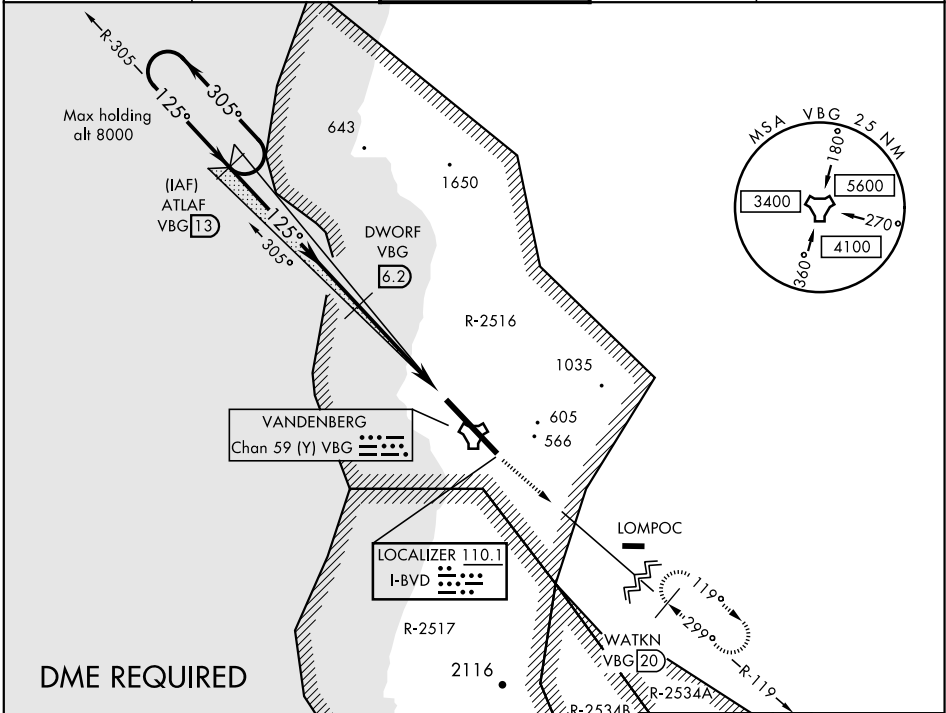
ILS or LOC/DME RWY 12

LOC I-BVD 110.1	APCH CRS 125°	Rwy Ldg 15,000 TDZE 265 Arpt Elev 368	AL-770 [USAF]	VANDENBERG AFB (KVBG)
---------------------------	-------------------------	--	---------------	-----------------------

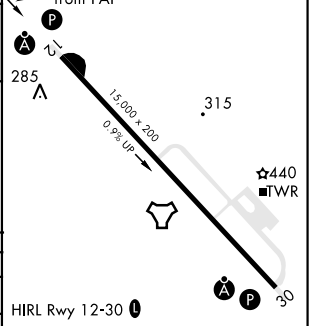
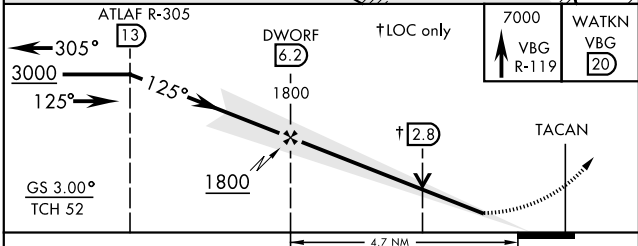
▼ * When ALS inop, increase RVR to 40 and vis to ¼ mile.
** When ALS inop, increase CAT AB RVR to 55 and vis to 1 mile, CAT CDE vis to 1¼ miles.

A ALSF-2 MISSED APPROACH: Climb out VBG TACAN R-119 until 20 DME (WATKN) and hold. Continue climb in hold maintain 7000.

ATIS 133.125 257.975	SANTA BARBARA APP/DEP CON 124.15 327.8	VANDENBERG TOWER ★ 124.95 (CTAF) 326.2	GND CON 121.75 275.8	CLNC DEL 121.75 275.8
--------------------------------	---	---	--------------------------------	---------------------------------



ELEV 368	TDZE 265
-----------------	-----------------



CATEGORY	A	B	C	D	E
S-ILS 12 *	465/24		200	(100-½)	
S-LOC/DME 12 **	700/24	435 (400-½)	700/40	435 (400-¾)	
CIRCLING	980-1 612 (700-1)	1000-1 632 (700-1)	1020-1¾ 652 (700-1¾)	1180-2¾ 812 (900-2¾)	1560-3 1192 (1200-3)

FAF to MAP 4.7 NM					
Knots	60	90	120	150	180
Min:Sec	4:42	3:08	2:21	1:53	1:34

ILS or LOC/DME RWY 12

SW-3, 25 FEB 2021 to 25 MAR 2021

SW-3, 25 FEB 2021 to 25 MAR 2021