

# HI-TACAN RWY 30

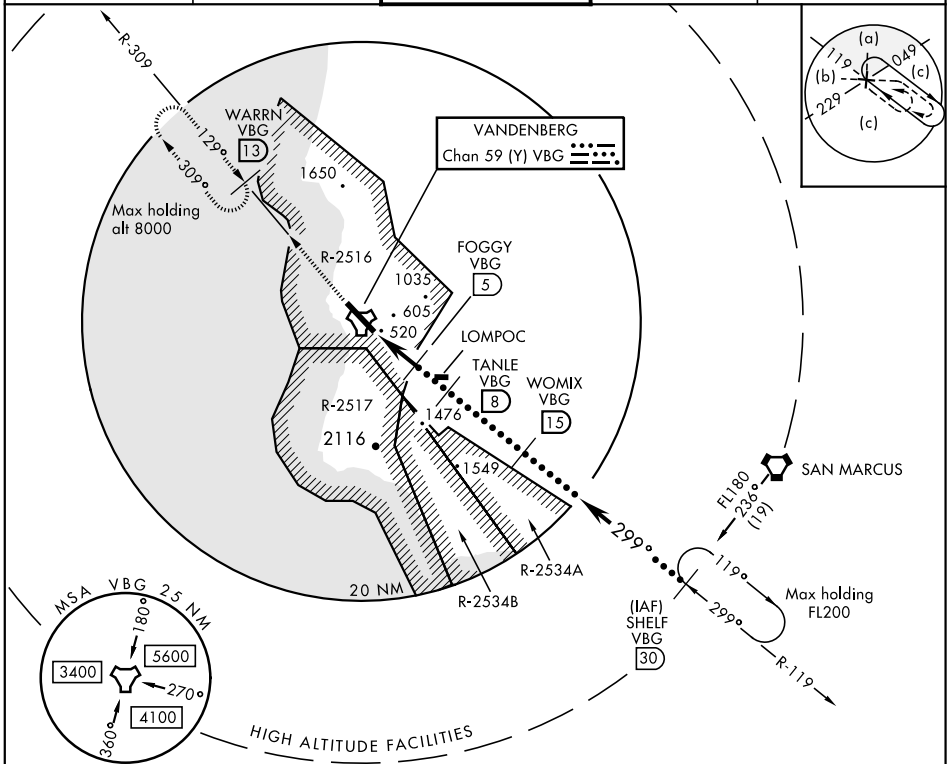
TACAN VBG Chan <b>59(Y)</b>	APCH CRS <b>299°</b>	Rwy Idg <b>15,000</b> TDZE <b>368</b> Arpt Elev <b>368</b>
--------------------------------	-------------------------	--

JAL-770 [USAF]

VANDENBERG AFB (KVBG)

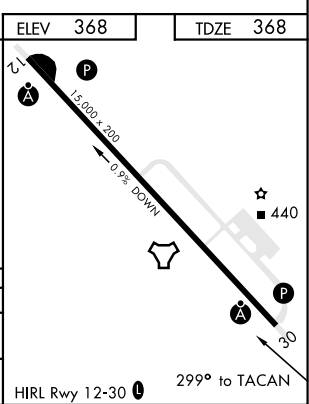
<p><b>▽</b> *When ALS inop, increase CAT CDE vis to 1½ miles.</p>	<p>ALSF-2 </p>	<p>MISSED APPROACH: Climb out VBG TACAN R-309 to WARRN and hold. Continue climb in hold maintain 4000.</p>
---	--------------------	--

<p>ATIS <b>133.125 257.975</b></p>	<p>SANTA BARBARA APP/DEP CON <b>124.15 327.8</b></p>	<p>VANDENBERG TOWER ★ <b>124.950</b> (CTAF) <b>326.2</b></p>	<p>GND CON <b>121.75 275.8</b></p>	<p>CLNC DEL <b>121.75 275.8</b></p>
--	--	--	--	---



EMERG SAFE ALT 100 NM 11,100

4000 ↑ VBG R-309	WARRN VBG 13	FOGGY VBG 5	TANLE VBG B	WOMIX VBG 15	SHELF R-117 VBG 30	FL180
TACAN	WIMRI 1.5	2.5	2.400	2.99°	4600	FL180
	1800					
	5 NM	3.5 NM				
CATEGORY	C		D		E	
S-30 *	920/60		552	(600-1½)		
CIRCLING	1020-1¾ 652 (700-1¾)		1180-2¾ 812 (900-2¾)		1560-3 1192 (1200-3)	



# HI-TACAN RWY 30

SW-3, 25 FEB 2021 to 25 MAR 2021

SW-3, 25 FEB 2021 to 25 MAR 2021