

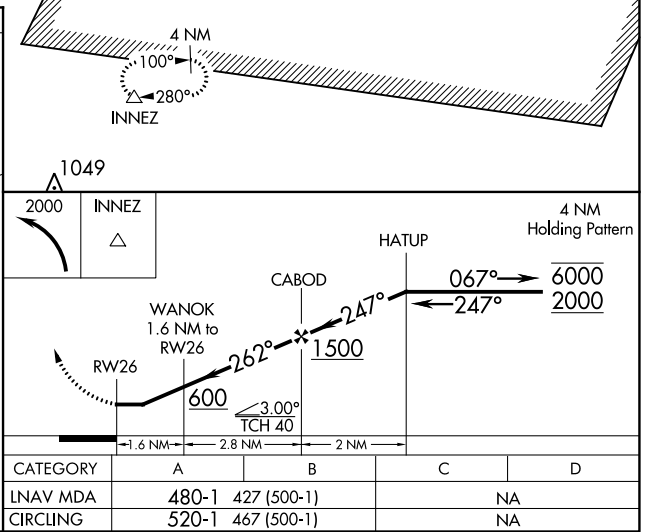
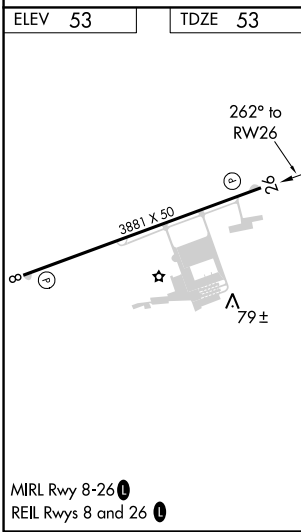
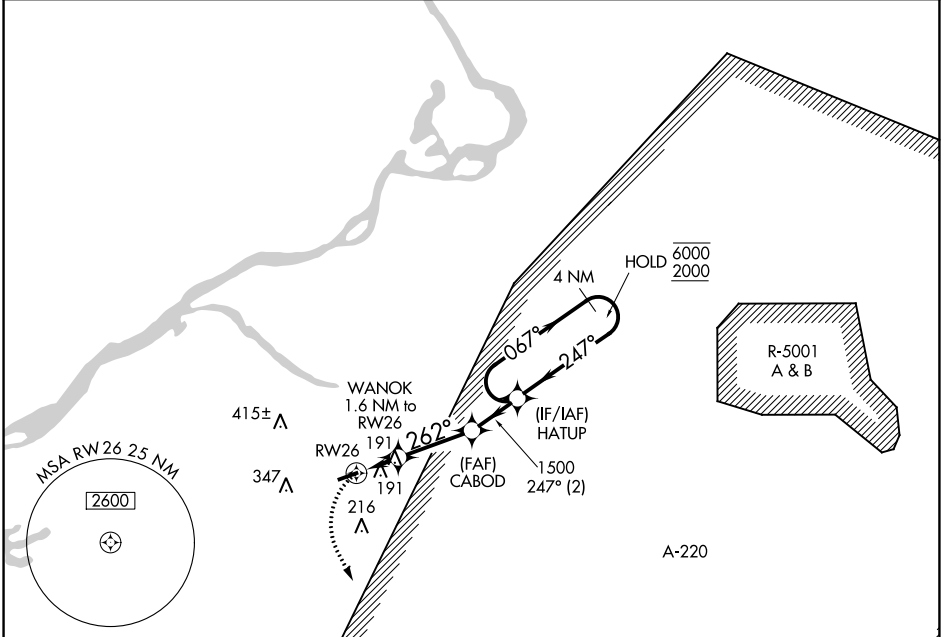
APP CRS	Rwy Idg	3881
262°	TDZE	53
	Apt Elev	53

RNAV (GPS) RWY 26

SOUTH JERSEY RGNL (VAY)

RNP APCH.		MISSED APPROACH: Climbing left turn to 2000 direct INNEZ and hold.		
▼ Rwy 26 helicopter visibility reduction below 1 SM NA. Procedure NA at night.				

ASOS	MC GUIRE APP CON	GCO	UNICOM	
119.325	126.475 363.8	121.725	122.8 (CTAF)	123.3



NE-2, 25 FEB 2021 to 25 MAR 2021

NE-2, 25 FEB 2021 to 25 MAR 2021