

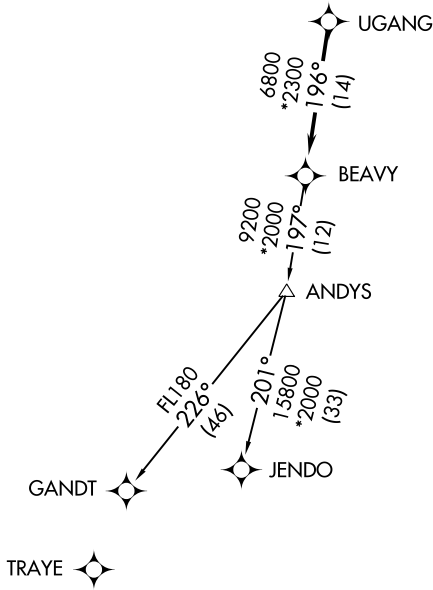
(BEAVY5.BEAVY) 19003

BEAVY FIVE DEPARTURE (RNAV)

ROCK HILL/YORK COUNTY/BRYANT FIELD (UZA)
AL-5361 (FAA) ROCK HILL, SOUTH CAROLINA

ASOS
120.775
CLNC DEL
126.85
UNICOM
123.05 (CTAF)
CHARLOTTE DEP CON
120.05 307.8

**TOP ALTITUDE:
3000**



TAKEOFF MINIMUMS
Rwys 2, 20: Standard.

- NOTE: For turbojets only.
- NOTE: DME/DME/IRU or GPS required.
- NOTE: RNAV 1.
- NOTE: RADAR required.
- NOTE: If unable to accept climb rates, advise ATC on initial contact.
- NOTE: Upon reaching 10000 MSL, accelerate to and maintain 280K, if unable advise ATC.
- NOTE: Transponder code will be issued via PDC or Charlotte CLNC DEL.

NOTE: Chart not to scale.

DEPARTURE ROUTE DESCRIPTION

Climb on heading assigned by ATC, expect RADAR vectors to UGANG, then on track 196° to BEAVY. Then on assigned transition. Maintain 3000, expect clearance to filed altitude within 10 minutes after departure.

GANDT TRANSITION (BEAVY5.GANDT)
JENDO TRANSITION (BEAVY5.JENDO)

BEAVY FIVE DEPARTURE (RNAV)
(BEAVY5.BEAVY) 03JAN19

ROCK HILL, SOUTH CAROLINA
ROCK HILL/YORK COUNTY/BRYANT FIELD (UZA)

SE-2, 25 FEB 2021 to 25 MAR 2021

SE-2, 25 FEB 2021 to 25 MAR 2021