

NDB UVA <b>281</b>	APP CRS <b>328°</b>	Rwy ldg TDZE Apt Elev	<b>5256</b> <b>933</b> <b>942</b>
-----------------------	------------------------	-----------------------------	-----------------------------------------

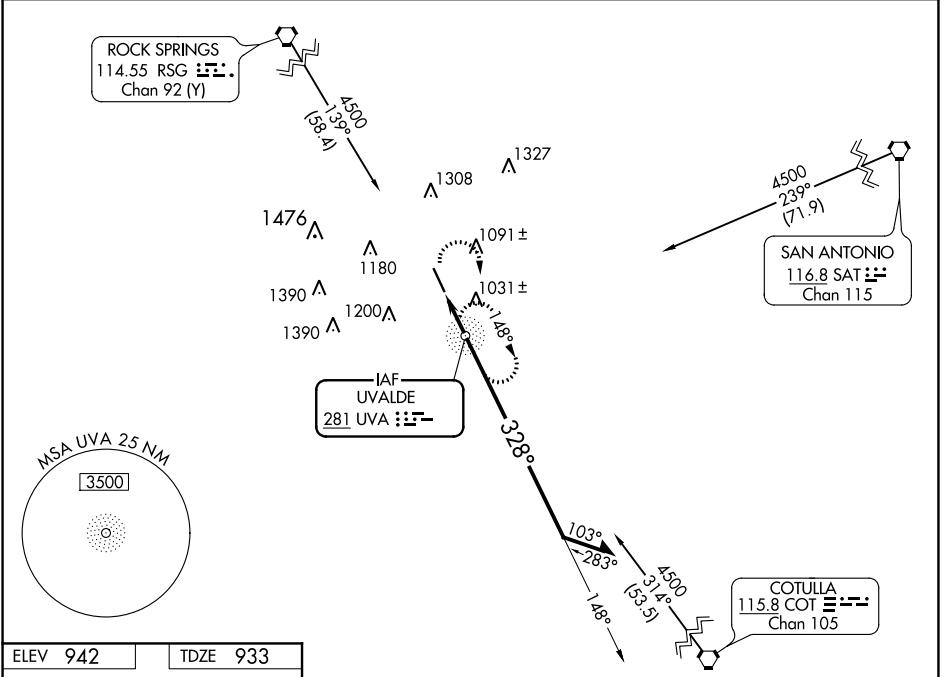
# NDB RWY 33

GARNER FIELD (UVA)

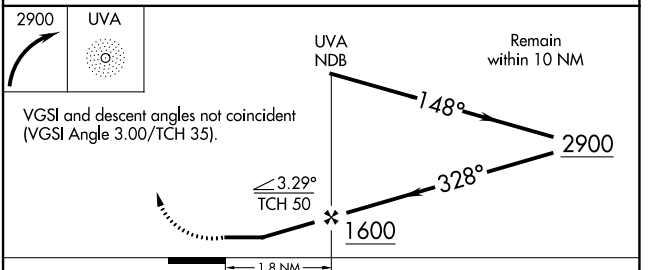
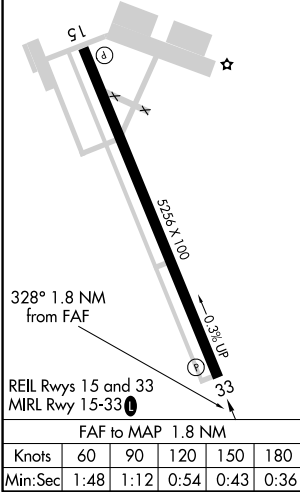
**NA** Obtain local altimeter setting on CTAF; when not received, use South Texas Rgnl at Hondo altimeter setting.

MISSED APPROACH: Climbing right turn to 2900 direct UVA NDB and hold.

AWOS-3 <b>124.175</b>	HOUSTON CENTER <b>134.95 269.4</b>	UNICOM <b>122.8 (CTAF) 0</b>
--------------------------	---------------------------------------	---------------------------------



ELEV 942	TDZE 933
----------	----------



CATEGORY	A	B	C	D
S-33	1340-1	407 (400-1)	1340-1¼	407 (400-1¼)
CIRCLING	1340-1	1460-1	1460-1½	1500-2
	398 (400-1)	518 (600-1)	518 (600-1½)	558 (600-2)
SOUTH TEXAS REGIONAL AT HONDO ALTIMETER SETTING MINIMUMS				
S-33	1440-1	507 (500-1)	1440-1½	507 (500-1½)
CIRCLING	1440-1	1560-1	1560-1¾	1600-2
	498 (500-1)	618 (700-1)	618 (700-1¾)	658 (700-2)

SC-3, 25 FEB 2021 to 25 MAR 2021

SC-3, 25 FEB 2021 to 25 MAR 2021