

LOC I-UTA <b>110.95</b> Chan <b>46 (Y)</b>	APP CRS <b>347°</b>	Rwy Idg <b>8500</b> TDZE <b>194</b> Apt Elev <b>194</b>
--	------------------------	---

# ILS or LOC RWY 35

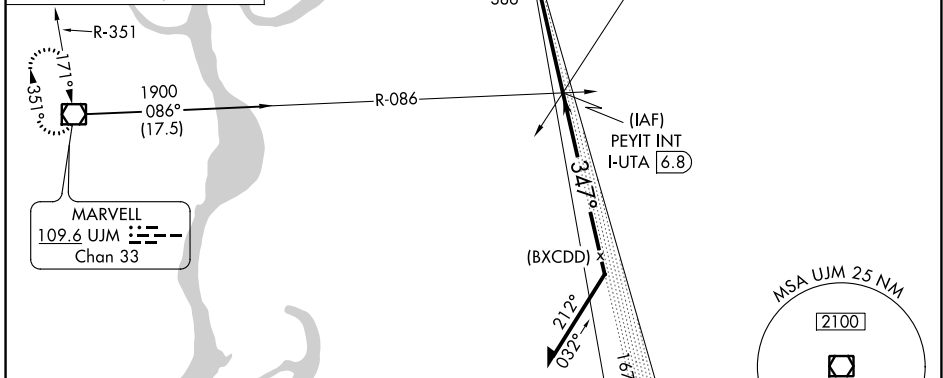
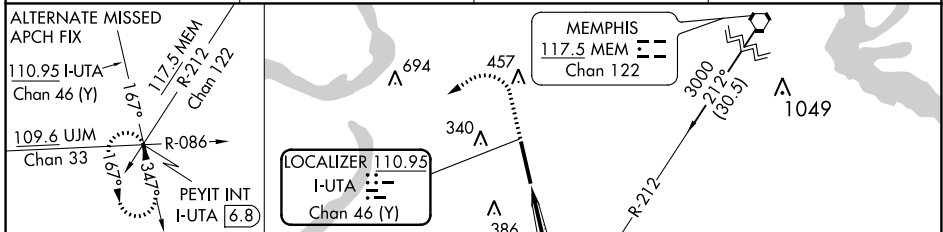
TUNICA MUNI (UTA)

**VDP NA** with Memphis altimeter setting. When local altimeter not received, use Memphis altimeter setting and increase S-ILS 35 DA to 480 and all MDA 100 feet, increase S-LOC 35 Cats C and D and Circling Cat C visibility ¼ mile. For inoperative MALSR when using Memphis altimeter setting increase S-ILS 35 all Cats visibility to 1 mile.

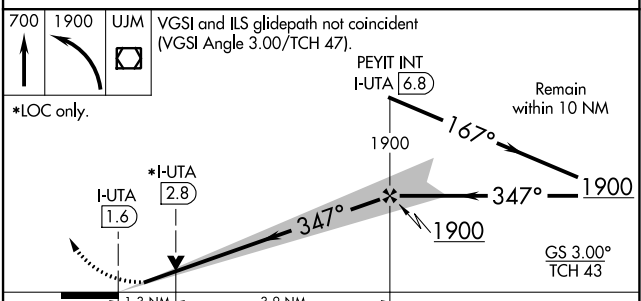
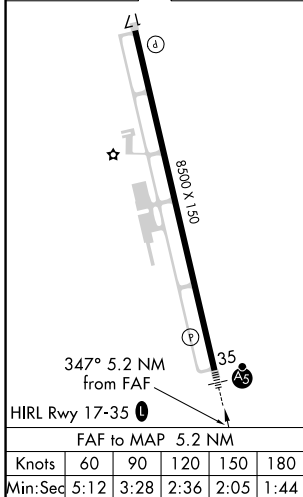
**MALSR**  
A5

**MISSED APPROACH:** Climb to 700 then climbing left turn to 1900 direct UJM VOR/DME and hold.

AWOS-3 <b>118.075</b>	MEMPHIS APP CON <b>119.1 291.6</b>	CLNC DEL <b>118.9</b>	UNICOM <b>123.0 (CTAF)</b>
--------------------------	---------------------------------------	--------------------------	-------------------------------



ELEV <b>194</b>	TDZE <b>194</b>
-----------------	-----------------



CATEGORY	A	B	C	D
S-ILS 35	394-1/2 200 (200-1/2)			
S-LOC 35	640-1/2 446 (500-1/2)		640-7/8 446 (500-7/8)	
CIRCLING	680-1 486 (500-1)		700-1/2 760-2 506 (600-1/2) 566 (600-2)	

SC-4, 25 FEB 2021 to 25 MAR 2021

SC-4, 25 FEB 2021 to 25 MAR 2021