

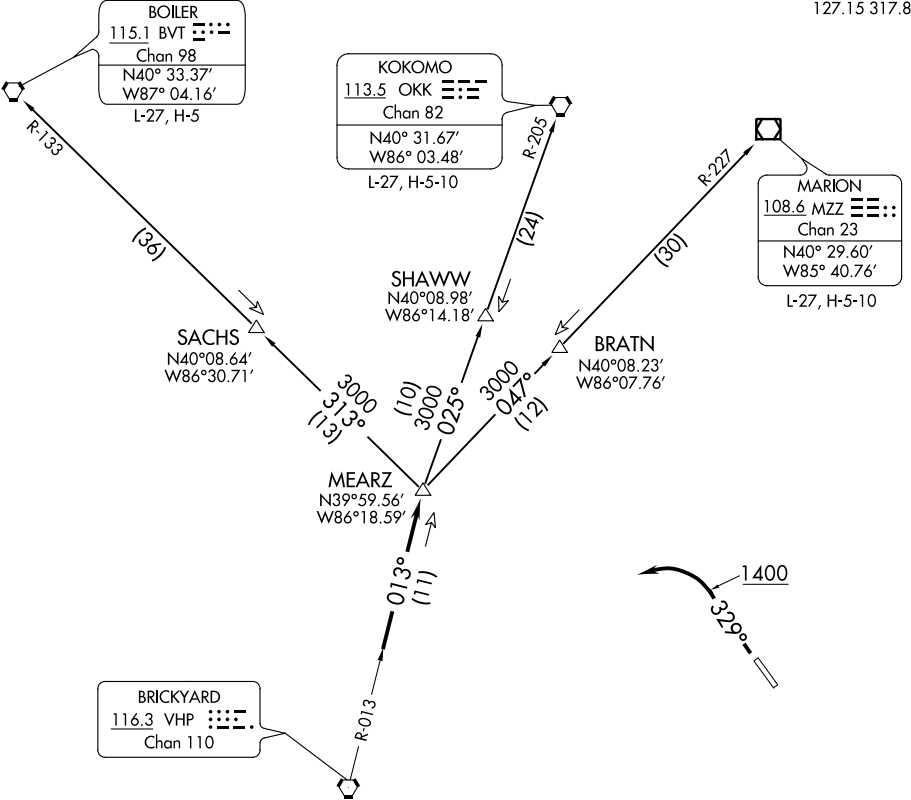
(MEARZ6.MEARZ) 20086
MEARZ SIX DEPARTURE

AL-5902 (FAA)

INDIANAPOLIS METROPOLITAN (UMP)
 INDIANAPOLIS, INDIANA

**TOP ALTITUDE:
 ASSIGNED BY ATC**

AWOS-3
 119.375
 CLNC DEL
 121.625
 INDIANAPOLIS DEP CON
 127.15 317.8



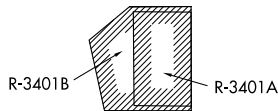
EC-2, 25 FEB 2021 to 25 MAR 2021

EC-2, 25 FEB 2021 to 25 MAR 2021

TAKEOFF MINIMUMS
 Rwy 15: NA-Obstacles.
 Rwy 33: Standard.

- NOTE: RADAR required.
- NOTE: Select appropriate localizer/DME frequency/channel prior to departure.
- NOTE: Turbojets accelerate to 250K until reaching 10000, if unable advise ATC.
- NOTE: Assigned to aircraft with a requested altitude of 11000 or above.

(NARRATIVE ON FOLLOWING PAGE)



NOTE: Chart not to scale.

MEARZ SIX DEPARTURE
 (MEARZ6.MEARZ) 01FEB18

INDIANAPOLIS, INDIANA
 INDIANAPOLIS METROPOLITAN (UMP)