

WAAS CH <b>66021</b> <b>W18A</b>	APP CRS <b>175°</b>	Rwy Idg <b>5500</b> TDZE <b>1174</b> Apt Elev <b>1174</b>
--	------------------------	--

# RNAV (GPS) RWY 18

COFFEY COUNTY (UKL)

RNP APCH.

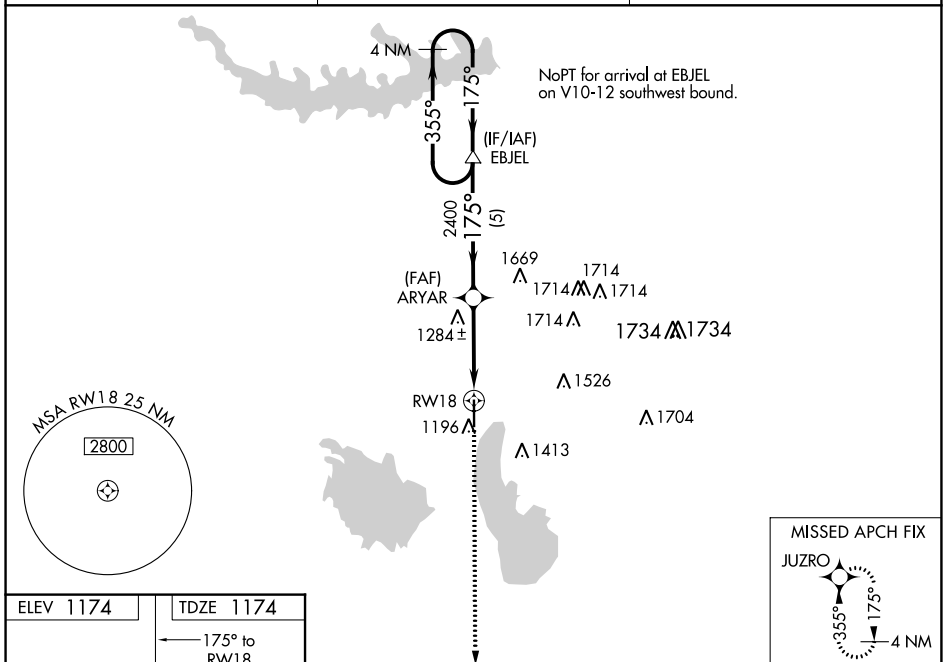
**NA** Baro-VNAV NA when using Emporia altimeter setting. For uncompensated Baro-VNAV systems, LNAV/VNAV NA below -17°C (2°F) or above 54°C (130°F). When local altimeter setting not received, use Emporia altimeter setting and increase all DA 56 feet and all MDA 60 feet and LNAV Cat C visibility ¼ mile. Procedure NA at night. Rwy 18 helicopter visibility reduction below 1 SM NA.

**MISSED APPROACH:**  
Climb to 3000 direct  
JUZRO and hold.

AWOS-3  
**121.125**

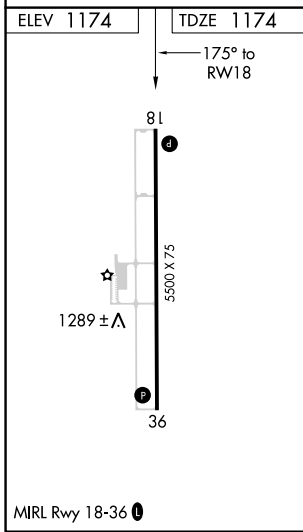
KANSAS CITY CENTER  
**127.725 270.25**

UNICOM  
**123.0 (CTAF) 0**



NC-2, 25 FEB 2021 to 25 MAR 2021

NC-2, 25 FEB 2021 to 25 MAR 2021



4 NM Holding Pattern	EBJEL	ARYAR	RWY 18	
3000	2400	2400		
GP 3.00° TCH 51	5 NM	3.7 NM		
3000	3000	3000	JUZRO	
CATEGORY	A	B	C	D
LPV DA		1424-1 250 (300-1)		NA
LNAV/VNAV DA		1424-1 250 (300-1)		NA
LNAV MDA		1540-1 366 (400-1)		NA
CIRCLING	1560-1 386 (400-1)	1640-1 466 (500-1)	1640-1½ 466 (500-1½)	NA