

WAAS CH <b>81902</b> W <b>23A</b>	APP CRS <b>231°</b>	Rwy ldg TDZE Apt Elev	<b>6005</b> <b>981</b> <b>981</b>
-----------------------------------------	------------------------	-----------------------------	-----------------------------------------

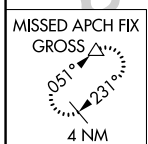
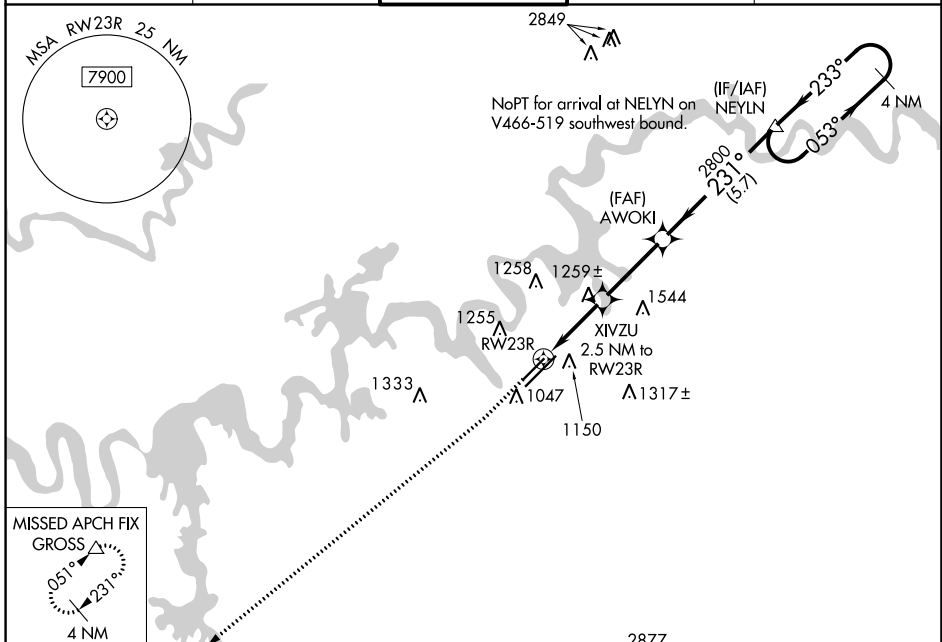
# RNAV (GPS) RWY 23R

MC GHEE TYSON (T'YS)

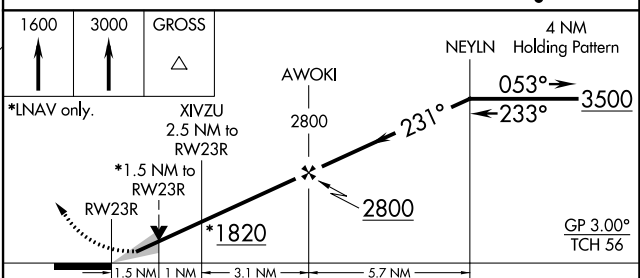
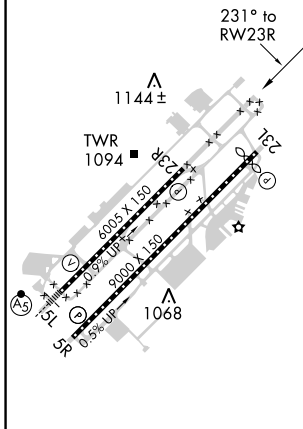
**ASR** For uncompensated Baro-VNAV systems, LNAV/VNAV NA below -10°C (14°F) or above 54°C (130°F). DME/DME RNP-0.3 NA.

MISSED APPROACH: Climb to 1600 then climb to 3000 direct direct GROSS and hold.

ATIS <b>128.35</b>	KNOXVILLE APP CON <b>123.9 360.8</b>	KNOXVILLE TOWER <b>121.2 257.8</b>	GND CON <b>121.9 348.6</b>	CLNC DEL <b>121.65</b>
-----------------------	-----------------------------------------	---------------------------------------	-------------------------------	---------------------------



ELEV 981	<b>D</b>	TDZE 981
----------	----------	----------



CATEGORY	A	B	C	D
LPV DA		1181/18	200 (200-½)	
LNAV/VNAV DA		1535-1⅓	554 (600-1⅓)	
LNAV MDA	1520/24	539 (600-½)	1520/55	539 (600-1)
<b>C</b> CIRCLING	1520-1 539 (600-1)	1620-1 639 (700-1)	1660-2 679 (700-2)	1900-3 919 (1000-3)

HIRL Rws 5L-23R and 5R-23L  
REIL Rws 5R, 23L, and 23R  
TDZ/CL Rwy 5R

SE-1, 25 FEB 2021 to 25 MAR 2021

SE-1, 25 FEB 2021 to 25 MAR 2021