

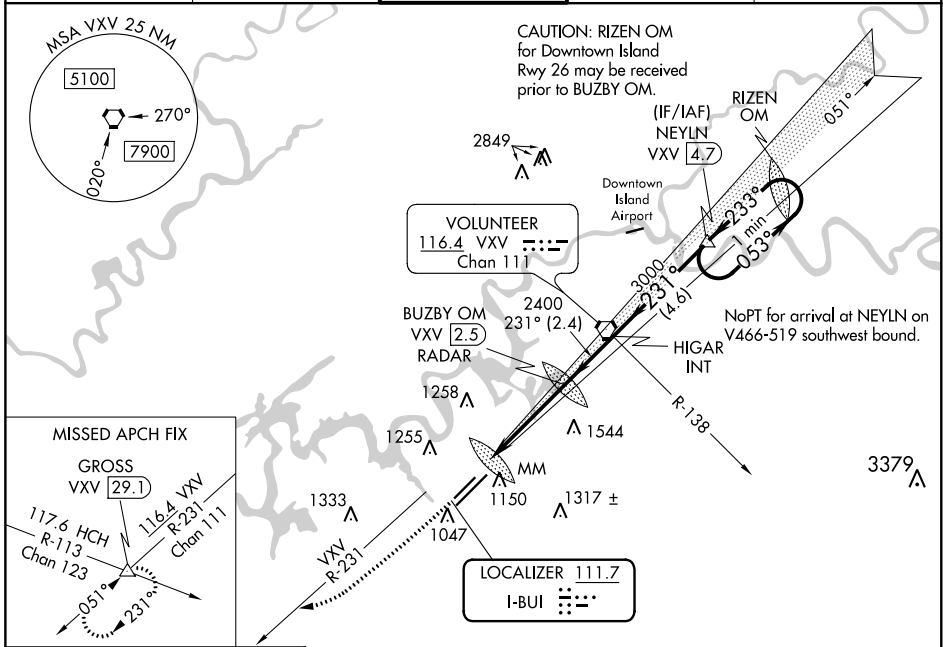
LOC I-BUI <b>111.7</b>	APP CRS <b>231°</b>	Rwy ldg TDZE Apt Elev	<b>6005</b> <b>981</b> <b>981</b>
---------------------------	------------------------	-----------------------------	-----------------------------------------

# ILS RWY 23R (CAT II)

MC GHEE TYSON (TYS)

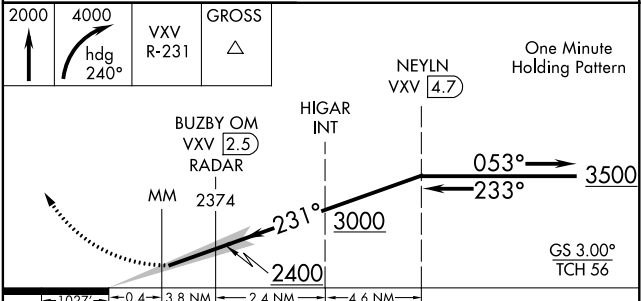
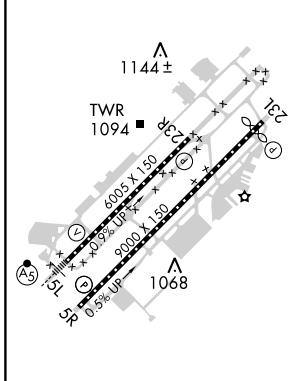
	MISSED APPROACH: Climb to 2000 then climbing right turn to 4000 on heading 240° and VXV VORTAC R-231 to GROSS INT/VXV 29.1 DME and hold.			
	ATIS <b>128.35</b>	KNOXVILLE APP CON <b>123.9 360.8</b>	KNOXVILLE TOWER <b>121.2 257.8</b>	GND CON <b>121.9 348.6</b>

ATIS <b>128.35</b>	KNOXVILLE APP CON <b>123.9 360.8</b>	KNOXVILLE TOWER <b>121.2 257.8</b>	GND CON <b>121.9 348.6</b>	CLNC DEL <b>121.65</b>
-----------------------	-----------------------------------------	---------------------------------------	-------------------------------	---------------------------



ELEV 981	<b>D</b>	TDZE 981
----------	----------	----------

## DME or RADAR REQUIRED



CATEGORY	A	B	C	D
S-ILS 23R		RA 104/12	100 DA 1081	

## CATEGORY II ILS - SPECIAL AIRCREW & AIRCRAFT CERTIFICATION REQUIRED

SE-1, 25 FEB 2021 to 25 MAR 2021

SE-1, 25 FEB 2021 to 25 MAR 2021