

**(ROCKY1.ROCKY)** 18032  
**ROCKY ONE DEPARTURE**

AL-5438 (FAA)

INDIANAPOLIS EXECUTIVE (TYQ)  
 INDIANAPOLIS, INDIANA

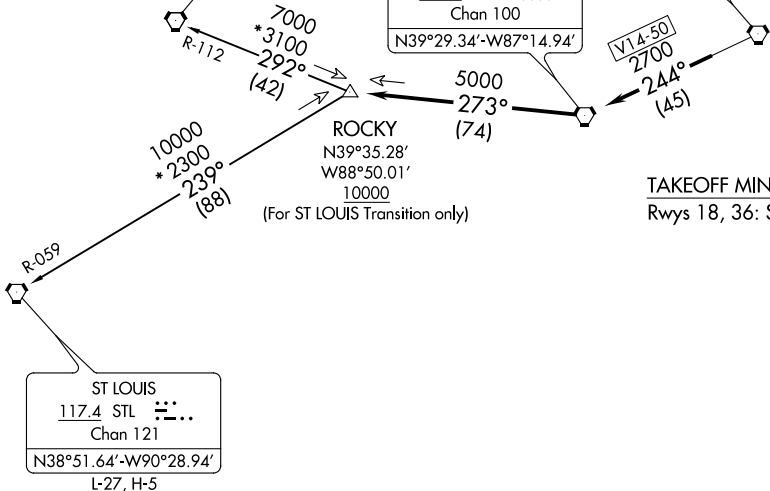
AWOS-3PT  
 120.725  
 INDIANAPOLIS DEP CON  
 124.65 127.15 317.8

**TOP ALTITUDE:  
 ASSIGNED BY ATC**

**SPINNER**  
 112.7 SPI  $\vdots\vdots\vdots$   
 Chan 74  
 N39°50.38'-W89°40.66'  
 L-27, H-5

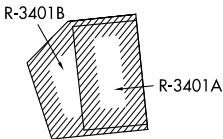
**TERRE HAUTE**  
 115.3 TTH  $\vdots\vdots\vdots$   
 Chan 100  
 N39°29.34'-W87°14.94'

**BRICKYARD**  
 116.3 VHP  $\vdots\vdots\vdots$   
 Chan 110



**TAKEOFF MINIMUMS**  
 Rwys 18, 36: Standard.

- NOTE: RADAR required.
- NOTE: Select appropriate localizer/DME frequency/channel prior to departure.
- NOTE: Turbojets accelerate to 250K until reaching 10000, if unable advise ATC.
- NOTE: Assigned to aircraft with a requested altitude of 11000 or above.



NOTE: Chart not to scale.

**DEPARTURE ROUTE DESCRIPTION**

**DEPARTING ALL OTHER AUTHORIZED RUNWAYS:** Climb on assigned heading to assigned altitude. Thence . . . .

. . . . expect RADAR vectors to join VHP R-244 to TTH VORTAC, then via TTH R-273 to ROCKY INT then via transition or assigned route. Expect clearance to requested altitude ten minutes after departure.

**SPINNER TRANSITION (ROCKY1.SPI):** From over ROCKY INT on SPI R-112 to SPI VORTAC.  
**ST LOUIS TRANSITION (ROCKY1.STL):** From over ROCKY INT on STL R-059 to STL VORTAC.

**ROCKY ONE DEPARTURE**  
**(ROCKY1.ROCKY)** 01FEB18

INDIANAPOLIS, INDIANA  
 INDIANAPOLIS EXECUTIVE (TYQ)

EC-2, 25 FEB 2021 to 25 MAR 2021

EC-2, 25 FEB 2021 to 25 MAR 2021