

LOC I-TYQ <b>111.3</b>	APP CRS <b>002°</b>	Rwy Idg <b>5500</b>
		TDZE <b>922</b>
		Apt Elev <b>922</b>

# ILS or LOC RWY 36

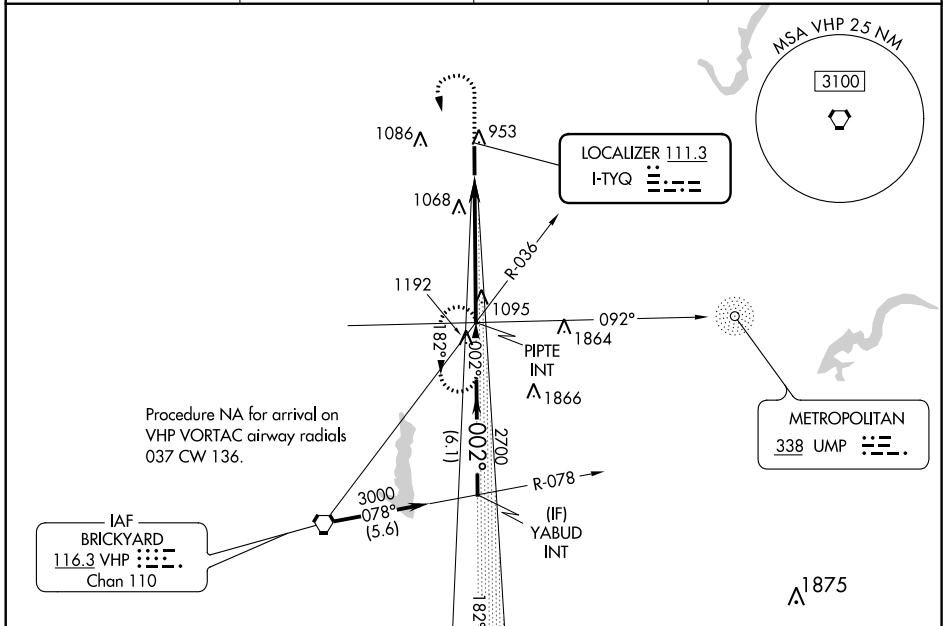
INDIANAPOLIS EXECUTIVE (TYQ)

ADF required for holding.

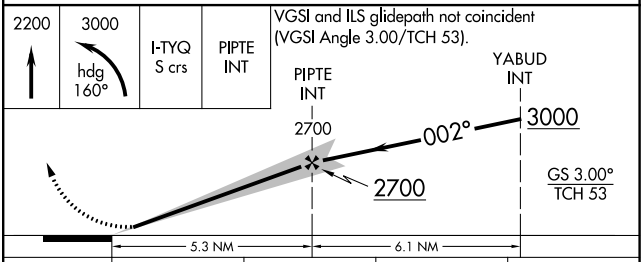
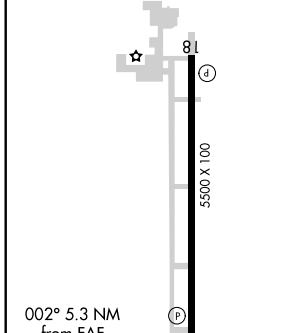
**NA** Autopilot coupled approach NA below 1900. When local altimeter setting not received, use Indianapolis Intl altimeter setting and increase DA 1184 feet and all visibilities 1/8 SM, increase all MDAs 80 feet and visibility Cats C and D, and Circling Cat C visibility 1/4 SM.

**MISSED APPROACH:** Climb to 2200 then climbing left turn to 3000 on heading 160° and on I-TYQ LOC south course (182°) to PIPTE INT and hold.

AWOS-3PT <b>120.725</b>	INDIANAPOLIS APP CON <b>124.65 127.15 317.8</b>	GCO <b>121.725</b>	UNICOM <b>123.05 (CTAF)</b>
----------------------------	--	-----------------------	--------------------------------



ELEV <b>922</b>	TDZE <b>922</b>
-----------------	-----------------



002° 5.3 NM from FAF	36	81	000 X 100	5500		
HIRL Rwy 18-36						
REIL Rwy 18 and 36						
FAF to MAP 5.3 NM						
Knots	60	90	120	150	180	
Min:Sec	5:18	3:32	2:39	2:07	1:46	
<input checked="" type="checkbox"/> CIRCLING	1400-1	478 (500-1)	1400-1 1/2	478 (500-1 1/2)	1480-2	558 (600-2)

EC-2, 25 FEB 2021 to 25 MAR 2021

EC-2, 25 FEB 2021 to 25 MAR 2021