

| | | |
|--|------------------------|---|
| WAAS Ch 87099 W13A | APP CRS 130° | Rwy Idg 4559 TDZE 387 Apt Elev 390 |
|--|------------------------|---|

RNAV (GPS) RWY 13

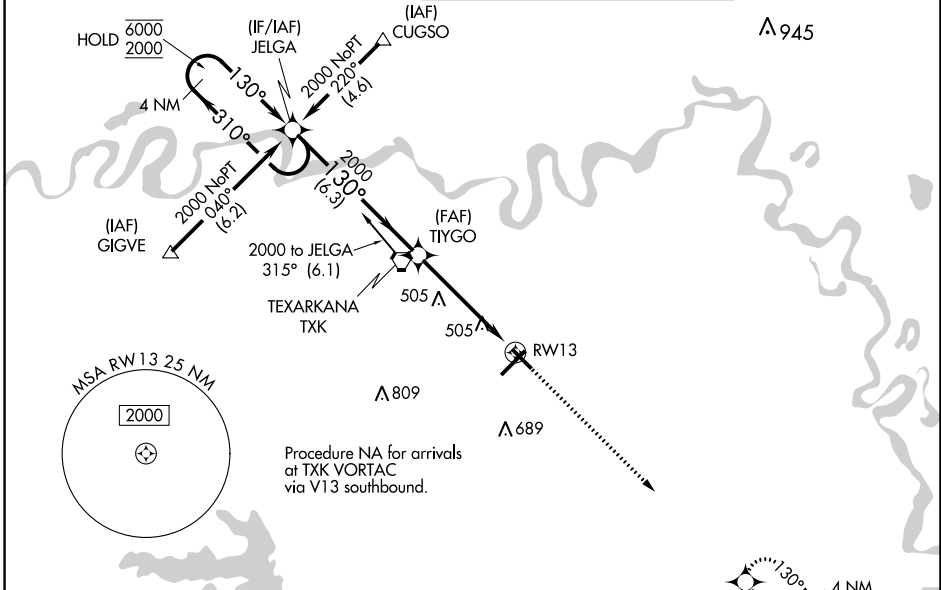
TEXARKANA RGNL-WEBB FIELD (TXK)

RNP APCH.

⚠ Baro-VNAV and VDP NA when using De Queen altimeter setting. Rwy 13 helicopter visibility reduction below $\frac{3}{4}$ SM NA. For uncompensated Baro-VNAV systems, LNAV/VNAV NA below -15°C and above 54°C. When local altimeter setting not received, use De Queen altimeter setting and increase all DA/MDA 100 feet; increase LNAV/VNAV all Cats and LNAV Cat C/D visibility $\frac{3}{8}$ SM, and Circling Cat C/D visibility $\frac{1}{4}$ SM.

MISSED APPROACH:
Climb to 2000 direct WATLE and hold.

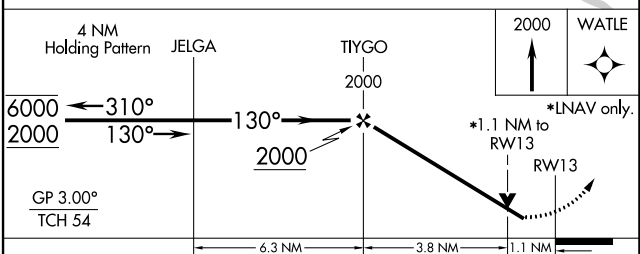
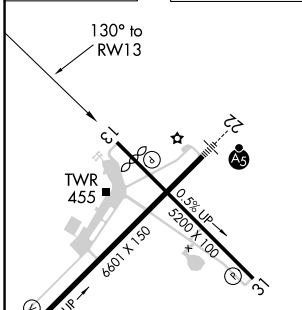
| | | | |
|----------------------|---|---|---------------------------|
| ATIS 120.2 | FORT WORTH CENTER 123.925 269.475 | TEXARKANA TOWER* 123.875 (CTAF) 235.625 | GND CON 119.225 |
|----------------------|---|---|---------------------------|



SC-1, 25 FEB 2021 to 25 MAR 2021

SC-1, 25 FEB 2021 to 25 MAR 2021

| | | |
|----------|----------|----------|
| ELEV 390 | D | TDZE 387 |
|----------|----------|----------|



| CATEGORY | A | B | C | D |
|--------------|------------------------|------------------------|------------------------|-----------------------|
| LPV DA | | 647-1 | 260 (300-1) | |
| LNAV/VNAV DA | | 767-1½ | 380 (400-1½) | |
| LNAV MDA | | 760-1 | 373 (400-1) | |
| CIRCLING | 820-1½ 430 (500-1½) | 860-1½ 470 (500-1½) | 900-1½ 510 (600-1½) | 1000-2 610 (700-2) |

MIRL Rwy 13-31 **Ⓛ**
HIRL Rwy 4-22 **Ⓛ**