

LOC/DME I-TXK <b>111.9</b> Chan <b>56</b>	APP CRS <b>220°</b>	Rwy Idg <b>6601</b> TDZE <b>384</b> Apt Elev <b>390</b>
---	------------------------	---

# ILS or LOC RWY 22

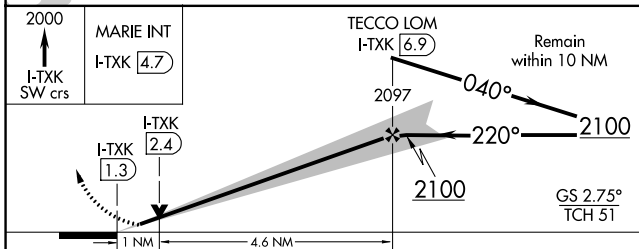
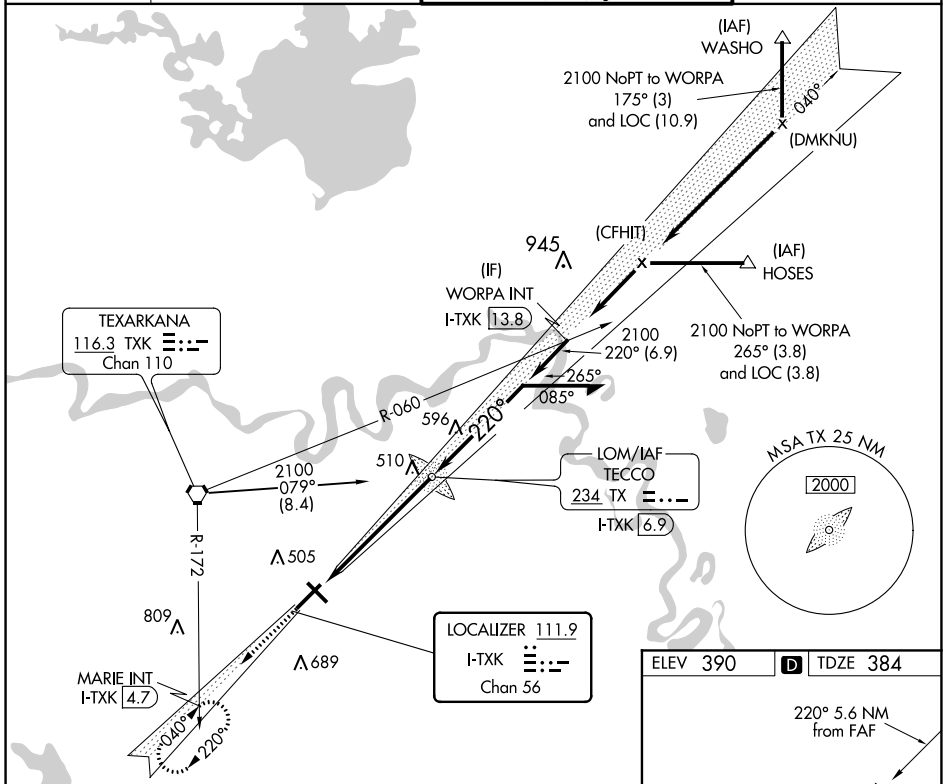
TEXARKANA RGNL-WEBB FIELD (TXK)

**⚠** When local altimeter setting not received, use J Lynn Helms Sevier County altimeter setting and increase all DA/MDA 100 feet. Increase S-LOC 22 Cats C/D and Circling Cats C/D visibility ¼ mile. For inoperative MALSR when using J Lynn Helms Sevier County altimeter setting, increase S-ILS 22 all Cats visibility to 1. VDP NA when using J Lynn Helms Sevier County altimeter setting.



**MISSED APPROACH:** Climb to 2000 via I-TXK southwest course to MARIE Int/I-TXK 4.7 DME and hold.

ATIS <b>120.2</b>	FORT WORTH CENTER <b>123.925 269.475</b>	TEXARKANA TOWER* <b>123.875 (CTAF) 0 235.625</b>	GND CON <b>119.225</b>
----------------------	---	---	---------------------------



CATEGORY	A	B	C	D
S-ILS 22		584-½	200 (200-½)	
S-LOC 22	760-½	376 (400-½)		760-¾ 376 (400-¾)
CIRCLING	820-1 430 (500-1)	860-1 470 (500-1)	900-1½ 510 (600-1½)	1000-2 610 (700-2)

ELEV 390	<b>D</b> TDZE 384
MIRL Rwy 13-31	
HIRL Rwy 4-22	
FAF to MAP 5.6 NM	
Knots	60 90 120 150 180
Min:Sec	5:36 3:44 2:48 2:14 1:52

SC-1, 25 FEB 2021 to 25 MAR 2021

SC-1, 25 FEB 2021 to 25 MAR 2021