

LOC I-TWF <b>108.3</b>	APP CRS <b>258°</b>	Rwy Idg TDZE Apt Elev	<b>8703</b> <b>4154</b> <b>4154</b>
---------------------------	------------------------	-----------------------------	---

# ILS or LOC RWY 26

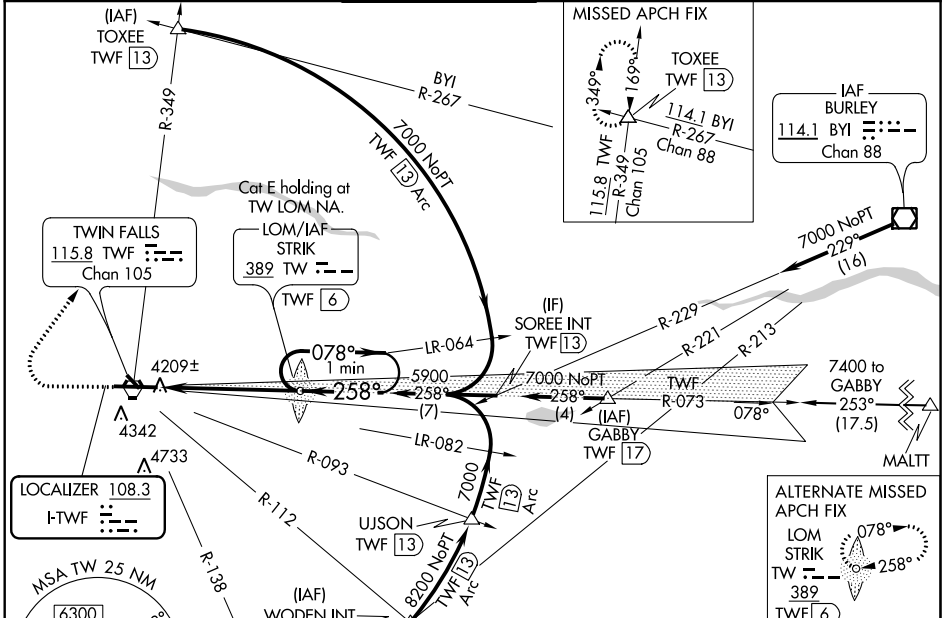
JOSLIN FIELD-MAGIC VALLEY RGNL (TWF')

**⚠** Night landing: Rwy 30 NA. When local altimeter setting not received, use Jerome altimeter setting and increase all DA 49 feet, and all MDA 60 feet, increase S-LOC 26 Cat C-E visibility 1/8 mile. For inoperative MALSR when using local or Jerome altimeter setting, increase S-ILS 26 Cat E visibility 1/4 mile and S-LOC 26 Cat E visibility 1/2 mile. ADF or DME required.

MALSR

MISSED APPROACH: Climb to 4700 then climbing right turn to 7000 on heading 020° and TWF VORTAC R-349 to TOXEE INT/TWF 13 DME and hold.

ASOS <b>135.025</b>	TWIN FALLS APP CON* <b>126.7 353.75</b>	TWIN FALLS TOWER* <b>118.2 (CTAF) 0 317.5</b>	GND CON <b>121.7</b>	CLNC DEL <b>123.65</b>	UNICOM <b>122.95</b>
------------------------	--	--	-------------------------	---------------------------	-------------------------



NW-1, 25 FEB 2021 to 25 MAR 2021

NW-1, 25 FEB 2021 to 25 MAR 2021

ELEV 4154	TDZE 4154
-----------	-----------

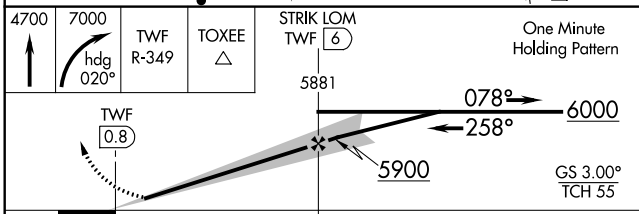


Diagram details:
 

- TWR 4223
- MDA 4208, 4220
- Distance: 258° 5.2 NM from FAF
- ILS/LOC: 108.3, 258°
- Other: REIL Rwy 8, HIRL Rwy 8-26

FAF to MAP 5.2 NM					
Knots	60	90	120	150	180
Min:Sec	5:12	3:28	2:36	2:05	1:44

CATEGORY	A	B	C	D	E
S-ILS 26		4354-1/2	200 (200-1/2)		
S-LOC 26		4480-1/2	326 (400-1/2)		
CIRCLING	4700-1 546 (600-1)	4780-1 626 (700-1)	5100-2 3/4 946 (1000-2 3/4)	5100-3	946 (1000-3)