

WAAS CH 72711 W13A	APP CRS 133°	Rwy Idg TDZE Apt Elev	6504 1115 1119
--	------------------------	-----------------------------	---

RNAV (GPS) RWY 13

THIEF RIVER FALLS RGNL (TVF)

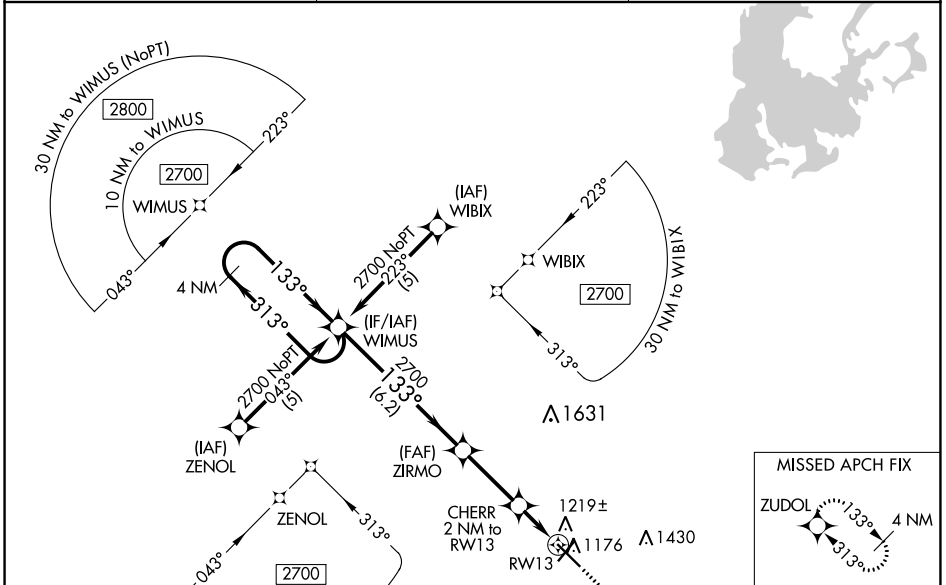
⚠ Baro-VNAV and VDP NA when using Crookston altimeter setting. For uncompensated Baro-VNAV systems, LNAV/VNAV NA below -17°C (2°F) or above 54°C (130°F). DME/DME RNP-0,3 NA.
⚠ When local altimeter setting not received, use Crookston altimeter setting: increase LPV DA to 1447 feet and all visibilities ½ SM; increase LNAV/VNAV DA to 1518 feet and all visibilities ¼ SM; increase all MDAs 100 feet and visibility Cats C and D ¾ SM.

MISSED APPROACH:
Climb to 2700 direct ZUDOL and hold.

AWOS-3PT
119.025

MINNEAPOLIS CENTER
132.15 269.6

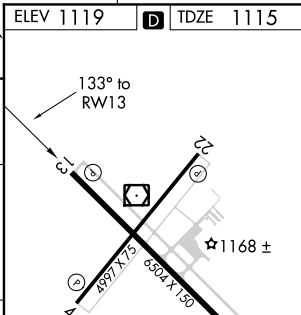
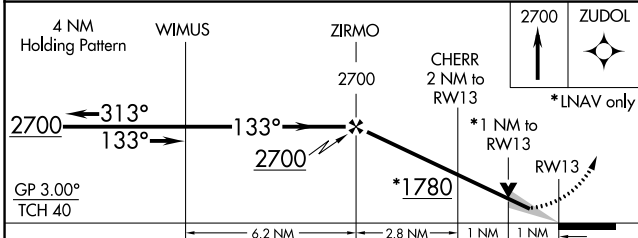
UNICOM
122.8 (CTAF) ①



NC-1, 25 FEB 2021 to 25 MAR 2021

NC-1, 25 FEB 2021 to 25 MAR 2021

ELEV 1119 **D** TDZE 1115



CATEGORY	A	B	C	D
LPV DA	1365-1		250 (300-1)	
LNAV/VNAV DA	1436-1¼		321 (400-1¼)	
LNAV MDA	1480-1		365 (400-1)	
CIRCLING	1540-1	1580-1	1820-2	1980-2¾
	421 (500-1)	461 (500-1)	701 (800-2)	861 (900-2¾)

HIRL Rwy 13-31 ①
 MRL Rwy 4-22 ①
 REL. Rws 4, 13 and 22 ①