

TITUSVILLE, FLORIDA

AL-8000 (FAA)

20310

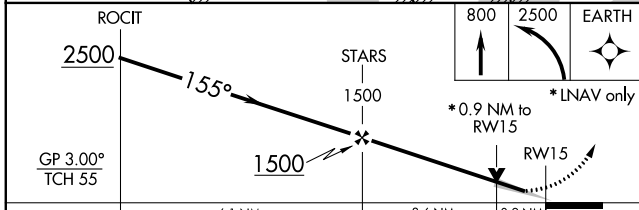
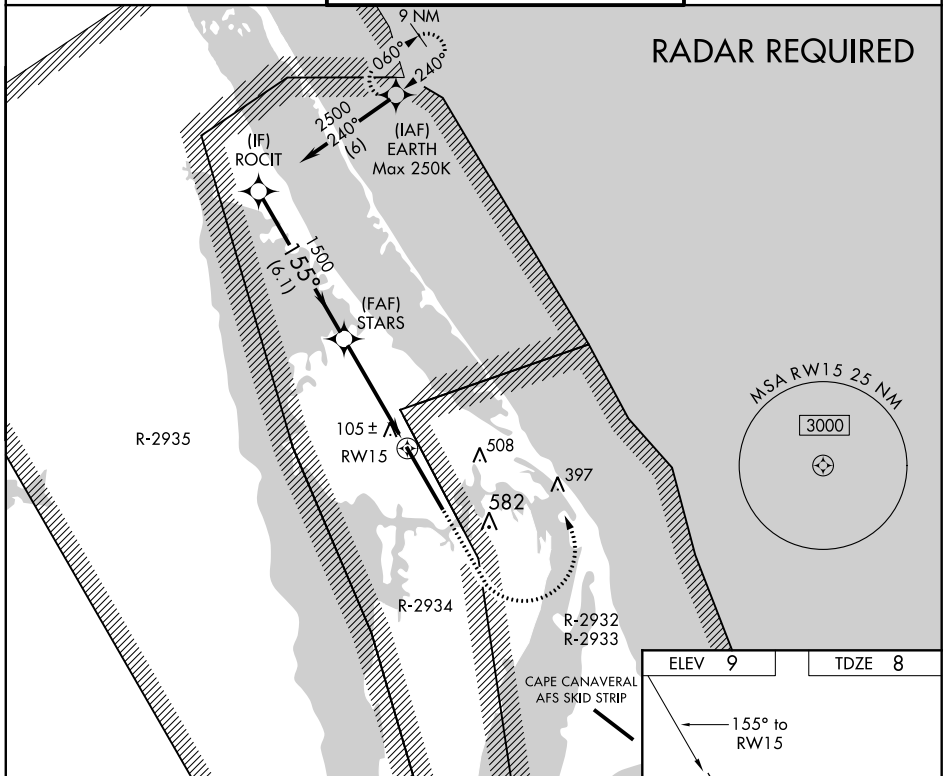
WAAS CH 50534 W15A	APP CRS 155°	Rwy Idg 15001 TDZE 8 Apt Elev 9
--	------------------------	--

RNAV (GPS) RWY 15

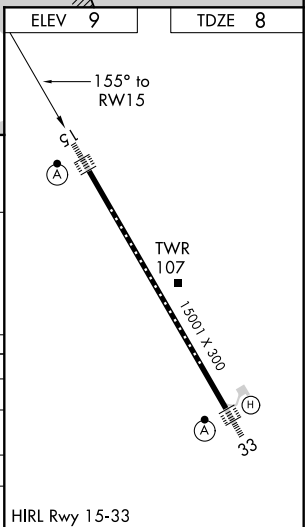
NASA SHUTTLE LANDING FACILITY (TTS)

<p>▽ For uncompensated Baro-VNAV systems, LNAV/VNAV NA below -15°C (5°F) or above 54°C (130°F). DME/DME RNP-0.3 NA. Inop table does not apply.</p> <p>▲</p>	ALS-2	MISSED APPROACH: Climb to 800, then climbing left turn to 2500 direct EARTH and hold.
---	-------	---

ORLANDO APP CON 134.95 281.425	NASA TOWER * 128.55 (CTAF) 284.0	GND CON 121.75
--	--	--------------------------



	6.1 NM		3.6 NM		0.9 NM
CATEGORY	A	B	C	D	E
LPV DA		208-1	200 (200-1)		
LNAV/VNAV DA		286-1	278 (300-1)		
LNAV MDA		360-1	352 (400-1)		
CIRCLING	420-1 411 (500-1)	460-1 451 (500-1)	940-2¾ 931 (1000-2¾)	940-3	931 (1000-3)



SE-3, 25 FEB 2021 to 25 MAR 2021

SE-3, 25 FEB 2021 to 25 MAR 2021

TITUSVILLE, FLORIDA
Amdt 1A 25MAY17

28°37'N-80°42'W

NASA SHUTTLE LANDING FACILITY (TTS) RNAV (GPS) RWY 15