

(MIGGY2.MIGGY) 19227

MIGGY TWO DEPARTURE (RNAV)

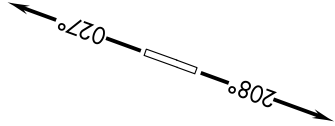
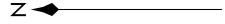
AL-5642 (FAA)

CUSTER (TTF)
MONROE, MICHIGAN

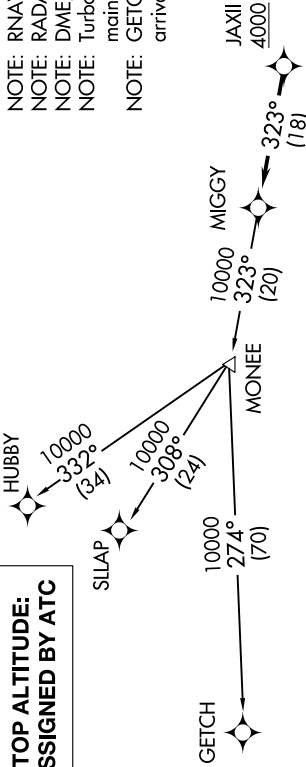
AWOS-3
119.075
CTAF
122.7
DETROIT DEP CON
134.3 284.0

- NOTE: RNAV 1.
- NOTE: RADAR required.
- NOTE: DME/DME/IRU or GPS required.
- NOTE: Turbojet departures at/above 10000, maintain 280K until advised by ATC.
- NOTE: GETCH TRANSITION: For use by KMKE area arrivals only, or as assigned by ATC.

TAKEOFF MINIMUMS:
Standard.



NOTE: Chart not to scale.



**TOP ALTITUDE:
ASSIGNED BY ATC**

DEPARTURE ROUTE DESCRIPTION

TAKEOFF RUNWAY 3: Climb on heading 027° or as assigned for RADAR vectors to cross JAXII at or above 4000, thence...

TAKEOFF RUNWAY 21: Climb on heading 208° or as assigned for RADAR vectors to cross JAXII at or above 4000, thence...

....on track 323° to MIGGY, then on (transition). Maintain ATC assigned altitude, expect filed altitude 10 minutes after departure.

- GETCH TRANSITION (MIGGY2.GETCH):
- HUBBY TRANSITION (MIGGY2.HUBBY):
- SILAP TRANSITION (MIGGY2.SILAP):

EC-1, 25 FEB 2021 to 25 MAR 2021

EC-1, 25 FEB 2021 to 25 MAR 2021

MIGGY TWO DEPARTURE (RNAV)

(MIGGY2.MIGGY) 15AUG19

MONROE, MICHIGAN
CUSTER (TTF)