

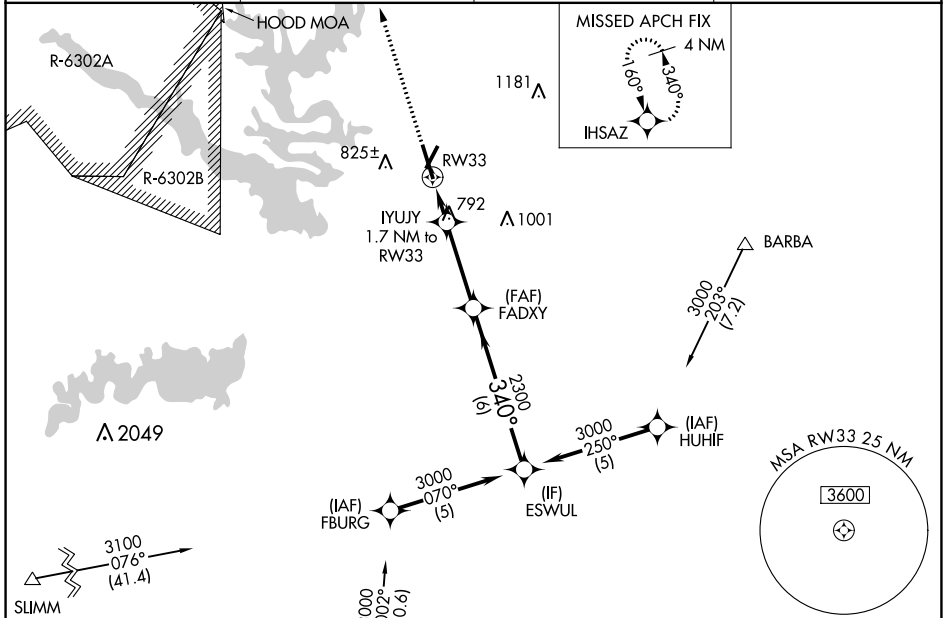
WAAS Ch <b>82401</b> <b>W33A</b>	APP CRS <b>340°</b>	Rwy Idg TDZE Apt Elev	<b>6301</b> <b>674</b> <b>682</b>
--	------------------------	-----------------------------	---

# RNAV (GPS) RWY 33

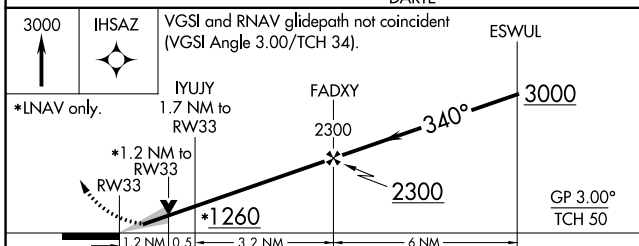
DRAUGHON-MILLER CENTRAL TEXAS RGNL (TPL)

RNP APCH.		MISSED APPROACH: Climb to 3000 direct IHSAZ and hold.	
<p>▼ For uncompensated Baro-VNAV systems, LNAV/VNAV</p> <p>▲ NA below -16°C or above 54°C .</p>			

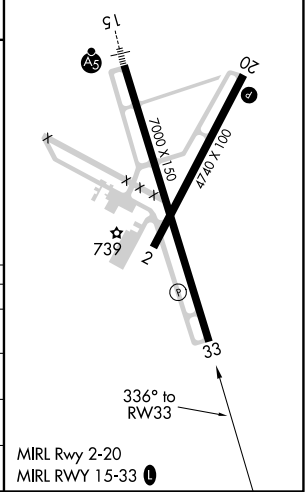
AWOS-3PT <b>134.975</b>	GRAY APP CON <b>120.075 370.0</b>	CLNC DEL <b>125.9</b>	UNICOM <b>123.0</b> (CTAF) <b>📞</b>
----------------------------	--------------------------------------	--------------------------	--



3000	IHSAZ	VGSI and RNAV glidepath not coincident (VGSI Angle 3.00/TCH 34).	ESWUL
------	-------	--	-------



ELEV 682	<b>D</b> TDZE 674
----------	-------------------



CATEGORY	A	B	C	D
LPV DA		874-¾	200 (200-¾)	
LNAV/VNAV DA		951-1	277 (300-1)	
LNAV MDA	1060-1	386 (400-1)	1060-1½ 386 (400-1½)	1060-1¼ 386 (400-1¼)
<b>C</b> CIRCLING	1120-1 438 (500-1)	1180-1 498 (500-1)	1280-1½ 598 (600-1½)	1420-2¼ 738 (800-2¼)

MIRL Rwy 2-20  
MIRL RWY 15-33 **📞**

SC-3, 25 FEB 2021 to 25 MAR 2021

SC-3, 25 FEB 2021 to 25 MAR 2021