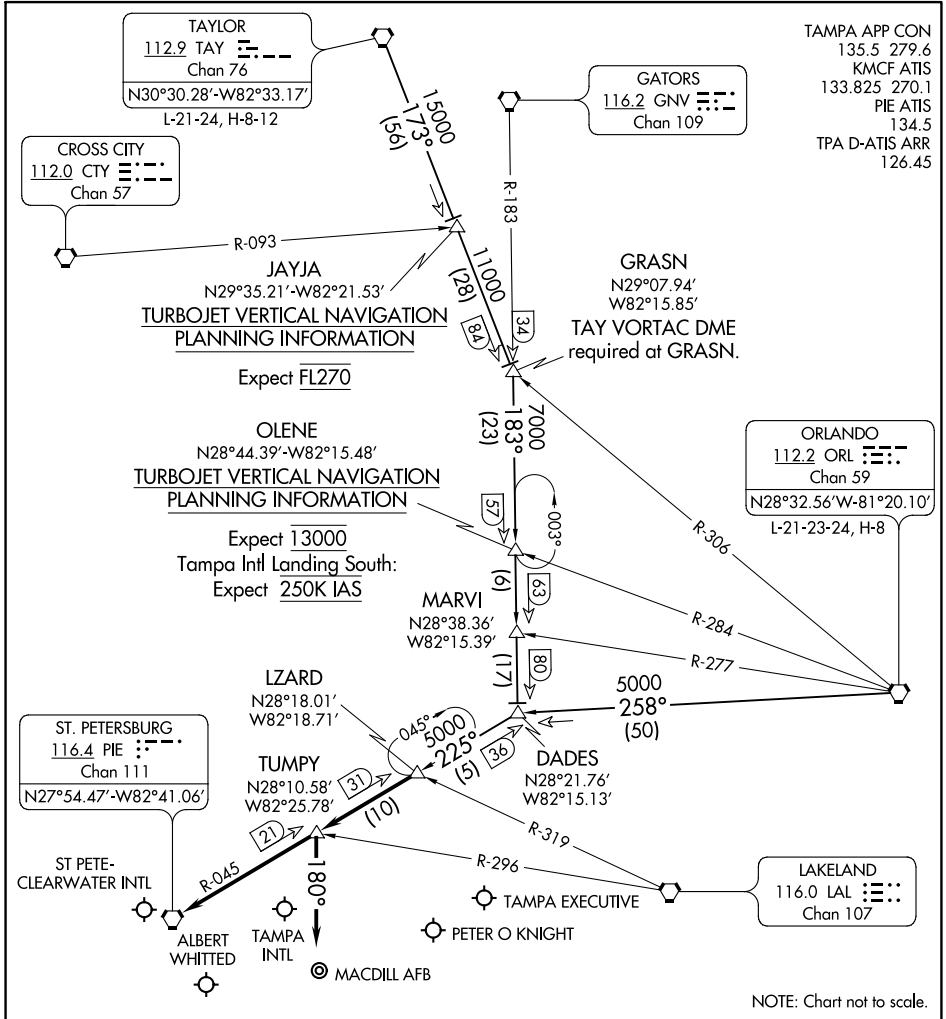


LZARD SIX ARRIVAL

TAMPA, FLORIDA



SE-3, 25 FEB 2021 to 25 MAR 2021

SE-3, 25 FEB 2021 to 25 MAR 2021

TAMPA APP CON
 135.5 279.6
 KMC F ATIS
 133.825 270.1
 PIE ATIS
 134.5
 TPA D-ATIS ARR
 126.45

TAYLOR
 112.9 TAY
 Chan 76
 N30°30.28'-W82°33.17'
 L-21-24, H-8-12

GATORS
 116.2 GNV
 Chan 109

CROSS CITY
 112.0 CTY
 Chan 57

JAYJA
 N29°35.21'-W82°21.53'
**TURBOJET VERTICAL NAVIGATION
 PLANNING INFORMATION**
 Expect FL270

GRASN
 N29°07.94'
 W82°15.85'
 TAY VORTAC DME
 required at GRASN.

OLENE
 N28°44.39'-W82°15.48'
**TURBOJET VERTICAL NAVIGATION
 PLANNING INFORMATION**
 Expect 13000
 Tampa Intl Landing South:
 Expect 250K IAS

ORLANDO
 112.2 ORL
 Chan 59
 N28°32.56'-W-81°20.10'
 L-21-23-24, H-8

ST. PETERSBURG
 116.4 PIE
 Chan 111
 N27°54.47'-W82°41.06'

LZARD
 N28°18.01'
 W82°18.71'

TUMPY
 N28°10.58'
 W82°25.78'

DADES
 N28°21.76'
 W82°15.13'

ST PETE-
 CLEARWATER INTL

LAKELAND
 116.0 LAL
 Chan 107

ALBERT WHITTED
 TAMPA INTL
 MACDILL AFB

TAMPA EXECUTIVE
 PETER O KNIGHT

NOTE: Chart not to scale.

TAYLOR TRANSITION (TAY.LZARD6): From over TAY VORTAC on TAY R-173 to GRASN INT, then on GNV R-183 to DADES INT, then on PIE R-045 to LZARD INT. Thence. . . .

ORLANDO TRANSITION (ORL.LZARD6): From over ORL VORTAC on ORL R-258 to DADES INT, then on PIE R-045 to LZARD INT. Thence. . . .

TAMPA INTL:
 . . . RWY 1L/R: From over LZARD INT on PIE R-045 to TUMPY INT. Depart TUMPY INT heading 180° for RADAR vectors to final approach course.
 . . . RWY 19L/R: From over LZARD INT on PIE R-045 to PIE VORTAC. Expect RADAR vectors to final approach after LZARD INT.

ALL OTHER AIRPORTS: From over LZARD INT on PIE R-045 to PIE VORTAC. Expect RADAR vectors to the airport after LZARD INT.

LZARD SIX ARRIVAL

TAMPA, FLORIDA